

# THE **MARNHULL** **MESSENGER**

OCTOBER 2024 | ISSUE 147

[www.marnhullmessenger.org.uk](http://www.marnhullmessenger.org.uk)

## **ACTION PACKED OCTOBER AT THE LEGION**

| Page 11

### **MARNHULL HORSE RIDERS**

| Page 13

### **MARNHULL PLAYERS PANTO NEWS!**

| Page 22



#### **Our Schools**

*See what the schools are up to*

| Page 20



#### **In Our Churches**

*All the latest news from the churches*

| Page 19



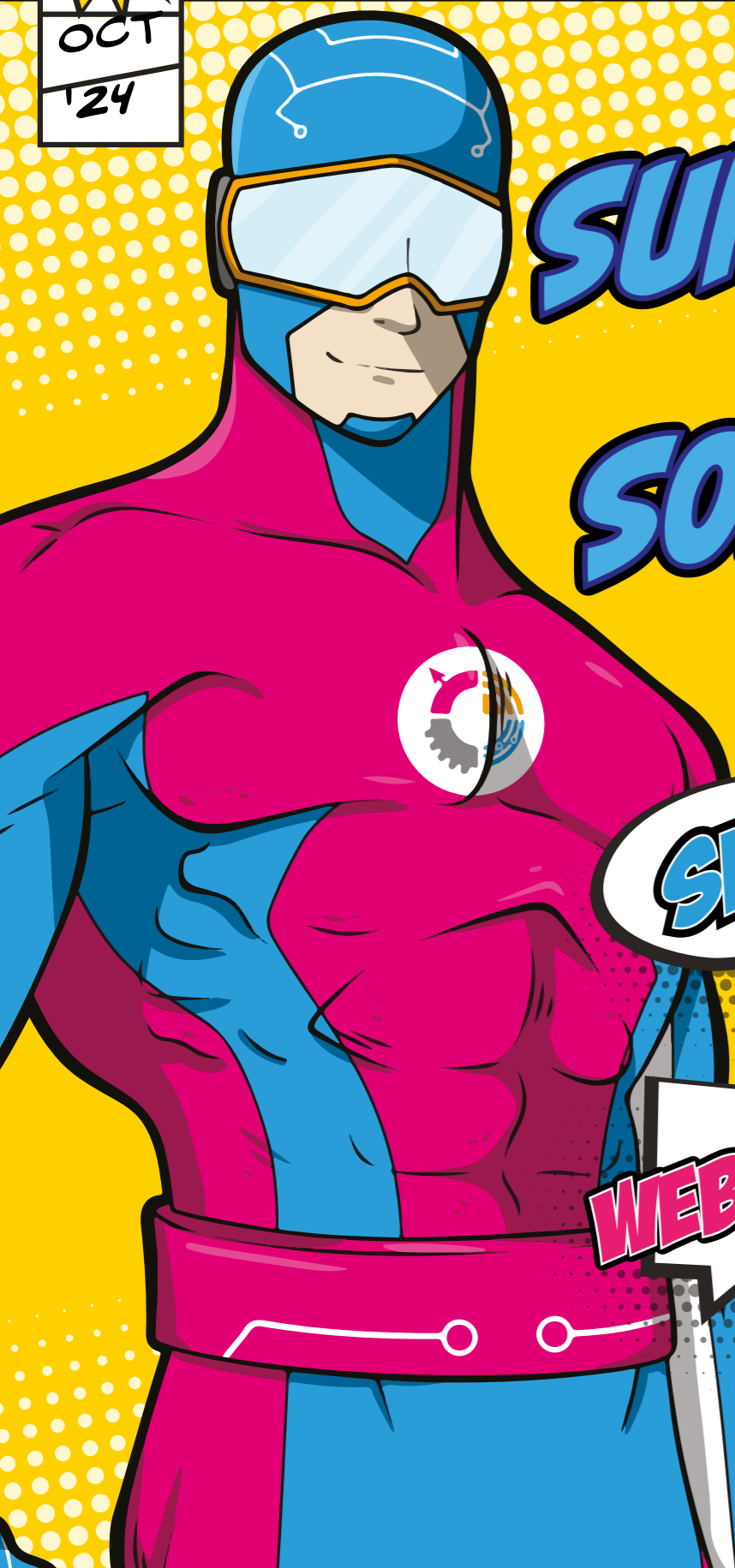
#### **The Surgeries**

*What's new from our local doctors surgeries*

| Page 5



#11  
OCT  
'24



# SUPERHERO WEB SOLUTIONS

**MARKETING**

**SEO**

**SOCIAL MEDIA**

**WEBSITES**

**APPS**

[WWW.DORSET.TECH](http://WWW.DORSET.TECH)

DISCOUNTED RATE FOR MARNHULL RESIDENTS

WELCOME TO YOUR  
**MARNHULL MESSENGER**

**CHRIS RYU**  
Messenger Editor



DEADLINE FOR NEXT ISSUE

**MID-DAY 14th October**

E-mail all texts, announcements and other requests to:  
[editor@marnhullmessenger.org.uk](mailto:editor@marnhullmessenger.org.uk)

Welcome back to the new look Messenger!

Last month I wrote my intro after getting back from Riverside Fest and this month I'm writing it after returning from the Cheese Fest. Great music, great food and great company.

Another busy month for me. The business is about to launch a new sister brand so lots of late evenings. Sprinkle in lots of Tae Kwon-Do and motorbike TLC time and it's been pretty non-stop. We've got a national Tae Kwon-Do championship in 2 weeks, so the team are ramping up practice.

In recent years October has become my favourite time of the year. Emma's developed a love of horror films, so we spend a lot of time together getting through her watch list! It's such a fun time for the kids in the village.

I don't have much else to say in my intro this month, so I'll leave you with a bit of white-space.

**CONTACT DETAILS**

These contact details are to be used in relation to the publication of the Marnhull Messenger ONLY

- EDITOR & WEBMASTER:** Chris Ryu  
[editor@marnhullmessenger.org.uk](mailto:editor@marnhullmessenger.org.uk)
- ADVERTISING:** Rosie Gall  
[rosiegall1@gmail.com](mailto:rosiegall1@gmail.com)
- TREASURER:** Kim Harden  
[treasurer@marnhullmessenger.org.uk](mailto:treasurer@marnhullmessenger.org.uk)
- CIRCULATION:** Catherine & Mark Turner  
[circulation@marnhullmessenger.org.uk](mailto:circulation@marnhullmessenger.org.uk)
- CHAIRMAN:** Ian Gall  
[chairman@marnhullmessenger.org.uk](mailto:chairman@marnhullmessenger.org.uk)  
01258 820484
- ADMINISTRATOR:** Fiona Nelson  
[administrator@marnhullmessenger.org.uk](mailto:administrator@marnhullmessenger.org.uk)  
01258 821036

**MARNHULL MESSENGER WEBSITE**

**Who Do I Contact?**

Any amendments or proposals for new pages in the messenger website should be made to:

Chris Ryu Email: [editor@marnhullmessenger.org.uk](mailto:editor@marnhullmessenger.org.uk)

**MARNHULL MESSENGER DELIVERIES**

It takes about 40 people, all of whom are volunteers, to collate and deliver The Marnhull Messenger to every home and business in the village. We are extremely grateful to this dedicated team, without whom the magazine simply would not flourish.

Whilst we always aim to deliver the magazine by the 1st of the month, from time to time illness, family commitments and a myriad of other personal issues can sometimes get in the way, resulting in the occasional late delivery. Recently, there have been a few complaints from villagers, because they felt their copy of The Marnhull Messenger was delivered late.

It might be worth pointing out that if it is essential to you to receive the Marnhull Messenger by a particular date and it hasn't arrived, then the Church, the two pubs and all the businesses in the village have spare copies available.

**Ian Gall – Chairman, The Marnhull Messenger Steering Group.**

**SUBMIT YOUR EVENTS INTO A LIVE CALENDAR**

On the messenger website and they'll be added to the printed automatically:  
[www.marnhullmessenger.org.uk](http://www.marnhullmessenger.org.uk)

**VILLAGE HELP**

- NORCAT** - Bookings 10am - 3pm - 01258 472164
- Dial-a-Ride - Major & Immediate Emergencies Only** - 07900 261182
- Marnhull Village Care Car Service:**  
Marnhull Village Care offer a door-to-door car service for people in the parish who cannot arrange their own transport for essential trips; medical appointments, for example. Passengers pay their volunteer drivers according to a mileage scale in line with HMRC regulations. Call 07777 559076 for all enquiries.

**DISCLAIMER**

The opinions expressed in the articles and on the pages of the Marnhull Messenger are not necessarily those of the Marnhull Messenger. All the dates and details are as supplied by the contributing organisations.. The Marnhull Messenger is not responsible for errors or omissions, accuracy of the content, nor the failure of any published event to go ahead. The letters and articles published in this magazine are accepted in good faith and the views expressed therein are not necessarily the views of the Messenger Steering Committee, whose decisions on publication are delegated to the Editor and are final.

This publication is provided for your use "as is" without warranty of any kind, either expressed or implied; inclusion of an advertisement for an event or service does not imply that they are endorsed by the Marnhull Messenger. The Marnhull Messenger will take all reasonable precautions to ensure that the content is socially and morally acceptable.

**PRIVACY POLICY**

The Marnhull Messenger respects the privacy of organisations and persons who submit information for publication. Personal details, including photographs, will only be published if approved and submitted by organisations or individuals. No personal details will be given out or sold to any third parties, whether individuals, organisations or companies.

# ANNUAL DIARY 2024 *All events are held at the Village Hall unless otherwise stated.*

## October

1st - Tuesday  
Bridge Club @ 14:00 Methodist Hall

2nd - Wednesday  
Fitsteps dance and exercise class @ 11:15  
Table Tennis - Wednesday @ 14:00  
Community Choir @ 18:30  
Pound Fitness @ 19:00 British Legion

4th - Friday  
Lunch Club @ 12:00

5th - Saturday  
The Marnhull Hub and Repair Café @ 10:00  
Dale Fender @ 21:00 British Legion

6th - Sunday  
St Gregory's Church Concert - Louise Cousins (Piano) and Special Guests @ 15:00 St Gregory's

7th - Monday  
Pound Fitness @ 09:30 British Legion  
Table Tennis - Monday @ 14:00

8th - Tuesday  
Bridge Club @ 14:00 Methodist Hall

9th - Wednesday  
Fitsteps dance and exercise class @ 11:15  
Table Tennis - Wednesday @ 14:00  
Tea with Friends @ 14:30 Methodist Hall  
Community Choir @ 18:30  
Pound Fitness @ 19:00 British Legion

11th - Friday  
Being here for each other @ 10:00 Methodist Hall  
Blackmore Vale Art Group @ 10:00  
Marnhull Autumn Charity Quiz 2024 @ 19:00

12th - Saturday  
The Marnhull Hub and Repair Café @ 10:00  
Young At Heart @ 20:00 British Legion

14th - Monday  
Pound Fitness @ 09:30 British Legion  
Table Tennis - Monday @ 14:00  
Lyn's Bingo @ 19:00 British Legion Club  
Women's Institute - Orangutan - Man of the Forest @ 19:30

15th - Tuesday  
Bridge Club @ 14:00 Methodist Hall

16th - Wednesday  
Fitsteps dance and exercise class @ 11:15  
Table Tennis - Wednesday @ 14:00  
Community Choir @ 18:30  
Pound Fitness @ 19:00 British Legion

18th - Friday  
Newcomers Social Evening @ 07:00  
Marnhull Community Cafe @ 10:00

19th - Saturday  
The Marnhull Hub and Repair Café @ 10:00

Mustang Sally @ 20:00 British Legion

20th - Sunday  
St Gregory's Church Concert - Stephen Binnington (Organ) @ 15:00 St Gregory's

21st - Monday  
Pound Fitness @ 09:30 British Legion  
Table Tennis - Monday @ 14:00  
Marnhull Music Society @ 19:15

22nd - Tuesday  
Bridge Club @ 14:00 Methodist Hall  
Moviola - The Fall Guy @ 19:30

23rd - Wednesday  
Fitsteps dance and exercise class @ 11:15  
Table Tennis - Wednesday @ 14:00  
Community Choir @ 18:30  
Pound Fitness @ 19:00 British Legion

25th - Friday  
Figure Drawing @ 10:30  
Barn Dance with Ploughman's Supper @ 19:00

26th - Saturday  
The Marnhull Hub and Repair Café @ 10:00  
Baz and Debs (Halloween) @ 20:00 British Legion Club

28th - Monday  
Pound Fitness @ 09:30 British Legion  
Table Tennis - Monday @ 14:00  
Lyn's Bingo @ 19:00 British Legion Club

29th - Tuesday  
Bridge Club @ 14:00 Methodist Hall

30th - Wednesday  
Fitsteps dance and exercise class @ 11:15  
Table Tennis - Wednesday @ 14:00  
Community Choir @ 18:30  
Pound Fitness @ 19:00 British Legion

## Novemeber

1st - Friday  
Lunch Club @ 12:00

2nd - Saturday  
Marnhull Hub & Repair Café @ 10:00

Deano @ 20:00 British Legion Club

3rd - Sunday  
St Gregory's Church Concert - Ian Jordinson's Organ Compositions @ 15:00 St Gregory's

4th - Monday  
Pound Fitness @ 09:30 British Legion  
Table Tennis - Monday @ 14:00

5th - Tuesday  
Bridge Club @ 14:00 Methodist Hall

6th - Wednesday  
Fitsteps dance and exercise class @ 11:15  
Table Tennis - Wednesday @ 14:00  
Community Choir @ 18:30  
Pound Fitness @ 19:00 British Legion

7th - Thursday  
Craft Club @ 10:00 Methodist Hall

8th - Friday  
Being here for each other @ 10:00 Methodist Hall  
Blackmore Vale Art Group @ 10:00

9th - Saturday  
The Marnhull Hub and Repair Café @ 10:00  
Fish 'n' Chip Poppy Quiz @ 19:30 British Legion Club

11th - Monday  
Pound Fitness @ 09:30 British Legion  
Table Tennis - Monday @ 14:00  
Lyn's Bingo @ 19:00 British Legion  
Women's Institute - From Court Shoes to Combats and Back Again @ 19:30



## FROM THE SURGERIES

### Vaccination Clinics

This Autumn the Practice is offering the Covid and Flu vaccinations to eligible patients and the Government has asked that they are given at the same appointment.

The clinics will be held in The Exchange, Sturminster Newton on the following dates:

- Saturday 5th October
- Saturday 12th October
- Saturday 19th October

Please do not contact the Practice – they will contact you and where appropriate, send out invitations based on the priority criteria set by the Government. If you can't use the link on your phone, please phone the Practice AFTER 11am.

The Practice will offer a flu vaccine for children 2-3 years old and Dorset Health Care will continue to offer the Covid vaccine for children under 18 years old. Dorset Health Care will also provide vaccinations to those that are housebound or in a Care Home.

This year, the RSV vaccine (respiratory syncytial virus) will be offered to eligible patients - those who turn 75 and those between 75 and 79. RSV is an infectious disease of the airways and lungs and often causes symptoms similar to a cold.

There is no need to contact the practice to book, they will contact you when the vaccine is available and when there are clinics to deliver this. You can find out more about the symptoms of RSV and who is eligible on the NHS site

### High Blood Pressure

1 in 3 people in the UK have high blood pressure and every day, 350 people in the UK have a stroke or heart attack, that could have been prevented.

This means checking your blood pressure could save your life.

Many people are unaware that they have high blood pressure, which rarely has noticeable symptoms. But if untreated, it increases your risk of serious problems such as heart attacks and strokes.

The only way to find out if your blood pressure (also called hypertension) is high is to have your blood pressure checked. The good news is that high blood pressure can be prevented and treated. That's why it's really important to get yours tested!

If you don't have access to your own blood pressure machine, they are available for you to check yourself in some pharmacies and in both the Abbey View and Sturminster Newton Medical Centres.

Once you have checked your blood pressure, you can look at what the results might mean for you by using the NHS blood pressure checker.

### Klinik

The Practice has been using Klinik for several years as an online consultation tool to provide increased choice and flexibility for patients in how they access care.

The majority of patients now use the system and most find it more convenient. This has meant that for those who choose to contact the Practice by telephone, the waiting time has reduced considerably.

From November 1st, the Practice will be switching from Klinik to Systmconnect, which as far as patients are concerned, looks and works in a very similar way, but there are added benefits.

Klinik does not automatically link with patient records, therefore information has to be manually transferred across. Systmconnect is linked to the patient records system which is a better and safer solution for the Practice. For patients, when you log on through the Practice website or NHS app, your information is pre populated in the form, which speeds up the process. The acknowledgement of your submission and response times, depending on the nature of your enquiry, will remain the same.

### Staywell Dorset

A new website has been launched to provide a one-stop shop for residents so they can find any and all answers about their health or social care needs without having to go between lots of different sites to find the right answer. The idea is to signpost people to the right place, from the correct provider, no matter who is providing the service.

A further objective is about prevention and the homepage provides links to a lot of tools from around the internet with this in mind.

For example you can find your nearest defibrillator, check your heart age etc. In short, it's a resource which allows people to self-inform, all available from one place. You can find it at [www.staywelldorset.nhs.uk](http://www.staywelldorset.nhs.uk)



# CYBERSECURITY



**Adrian Young explains what Cybersecurity and Artificial Intelligence means to us all.**

**Wednesday 9th October, entry £4  
7.30pm in Bow Room, The Exchange**

Hot and cold drinks available at the bar

### BEING HERE FOR EACH OTHER

If you are grieving over someone or something you have lost, come and join our friendly, informal group to find support and explore ways to cope. Friday 11th October, 10-11.30am (monthly)


Marnhull Methodist Church Hall, Burton St DT10 1PS

For more details please contact End of Life Doulas Flora on 07778 431264 or Nicky on 07975 570381

**FOR VILLAGE HALL BOOKINGS**  
[www.marnhullvillagehall.org.uk](http://www.marnhullvillagehall.org.uk)  
 and click on 'Book the Village Hall'  
 For general enquiries, email:  
[bookings@marnhullvillagehall.org.uk](mailto:bookings@marnhullvillagehall.org.uk)  
 (9 to 5 weekdays)

**SUBMIT YOUR EVENTS INTO  
 A LIVE CALENDAR**

On the messenger website and they'll be added to this diary in the next issue!  
[www.marnhullmessenger.org.uk](http://www.marnhullmessenger.org.uk)



**THE PLOUGH**  
MANSTON.DORSET

# THE PLOUGH FREEHOUSE

A beautiful 350 year old stone built country pub offering superb fresh homecooked food, excellent wines and great beers. After a two year renovation project Peter and Karlene have created a super cosy snug bar and a light and airy conservatory/dining area.

Great traditional pub grub & specials menu.

Dietary Needs catered for.

Family & Dog friendly. Easy Access. Large Car Park.

Large Garden.

The Plough Inn, Shaftesbury Road, Manston, Sturminster Newton, Dorset, DT10 1HB.  
Phone 07783 009402.  
Website: ploughmanston.com

EXPECT *Far* MORE



At Farnfields Solicitors you can always expect a warm welcome combined with dedicated expertise and transparent straightforward pricing. All in all, when choosing us you can expect far more peace of mind.

e-mail: [info@farnfields.com](mailto:info@farnfields.com) or visit [www.farnfields.com](http://www.farnfields.com)

**Farnfields**  
SOLICITORS

GILLINGHAM 01747 825432 | SHAFTESBURY 01747 854344 | WARMINSTER 01598 214661

No Gimmicks Quality Products



**PITMAN WINDOWS**  
Windows - Doors - Conservatories

Combining a personal service with competitive prices using quality products

**Windows Doors Conservatories  
Replacement roofs Fascia Soffits**

Tel 01747 840885 or 0800 0833623  
Website: [pitmanwindows.com](http://pitmanwindows.com)

CERTASS Registered Installer | PLANITHERM Installer Network | FENSA Registered Company

# MARNHULL GREEN TEAMS

## Taking the Environment Around Marnhull Seriously

We face an environmental crisis: that's a simple fact. Big things need to be done about this - but most of us are only able to do small things. Well: if enough of us do the small things, that will certainly help! From little acorns, etc...

So why not plant a tree if you can?! We have lots of saplings available: please contact Ros Eveleigh for information on this, on (01258) 821049, or via Facebook or [marnhullgreen@outlook.com](mailto:marnhullgreen@outlook.com).

Another way to address the problem is to think 'Reduce, Re-use, Recycle'.

We can reduce our use of environmentally damaging and polluting materials by substituting environmentally-friendly products for less friendly ones, and by buying things with minimal and/or recycled or at least recyclable packaging. We can also do a lot to reduce food waste: surplus produce can be placed in the church porch, and have a look at the Olio app too. We have a local provider...!

We can re-use, whether by repairing or refurbishing things instead of replacing them, or by simply refilling containers at places like Myrtle & Marigold or Coconut & Cotton in Shaftesbury, instead of buying a new container as well as what's in it - you only need the latter, after all! Marnhull Green Teams' Giveaway and Takeaway Days are another example: why throw things away if someone else can use them? (There'll be another G&T Day next year.)

And, of course, we can recycle. Which never seems to be as simple as it might be...

There is clear guidance on what the Council can recycle, in their kerbside collections or at their tips, at [www.dorsetcouncil.gov.uk](http://www.dorsetcouncil.gov.uk): search 'recycling'. Remember too that supermarkets will take soft plastic packaging - Tesco's in Shaftesbury provide good big bins for this.

And Marnhull Green Teams can recycle some other things that the Council cannot. Our bins are located behind the Village Hall and are open when the Hub is open, from 10 to 12 most Saturday mornings.

As you may have noticed, though, what we can collect varies. This is for reasons beyond our control - mostly changes to recycling contracts agreed far away from North Dorset! There's an updated list below; but please do read the details on our bins or ask the duty volunteer, to be found in the hall if not actually tending the bins themselves. If you can ensure that you only leave items we can recycle, it does save our volunteers a great deal of work...

### Currently we can take:

- cheese packaging
- coffee packaging but NOT pods
- bread bags
- biscuit & cake wrappers
- crisp & similar snack packaging but NOT confectionery wrappers
- Pringles tubes
- milk bottle tops
- toothbrushes & interdental brushes but NOT toothpaste tubes
- disposable razors
- a range of personal care items - but please check what it says on the bin, or with the volunteer on duty
- printer ink cartridges
- toner cartridges

Items that we have recently had to reluctantly stop collecting include laundry & dishwashing wrappers, writing instruments, blister packs and toothpaste tubes. Please do not leave these with us: we can no longer deal with them.

But thank you for recycling - and reducing and re-using - where you can!

### Marnhull Craft Club

Our programme started again in September with a demonstration from Josephine Nagel, who showed us the amazing advent calendars she had made for her grandchildren - and great grandchildren!

We were all inspired by the calendars, which included House Advent, Santa's workshop and Yappy Advent. They were a truly beautiful gift, which would be treasured for years to come.

We had also received a letter from Dorset and Somerset Air Ambulance, thanking the Club for the donation of £550 which had been raised from the Presentation by Crimson Peacock in May. Many thanks to everyone who came along and supported us.

For our October meeting, we are delighted to welcome Sweet Liberty Belle for a longer session, where we will learn how to make a brushed felt picture using different tools and techniques.

Based in Somerset, Sweet Liberty Belle run felting workshops and have appeared on Kirstie Allsop's Channel 4 'Homemade Christmas', where their Donkey Wreath won the wreath making competition.

The workshop starts at 10am on Thursday 3rd October in the Methodist Church Hall and will last 3 - 4 hours.

The cost is £15, which covers all the materials and refreshments will also be available.

The workshop is suitable for everyone, whether you've done felting before or are an absolute beginner.

Places are limited, so please email Pippa - [pippajj@me.com](mailto:pippajj@me.com) - if you'd like to come along, You can find more information on Sweet Liberty Belle and their work on their website [www.sweetlibertybelle.com](http://www.sweetlibertybelle.com)



A Felted Racing Hair



**CLOCK HOUSE**  
Bed & Breakfast  
Burton Street, Marnhull

Charming, peaceful, tucked away B&B in the centre of the village. Clock House offers four ground floor, ensuite bedrooms with terrace and garden access and a guest living room with woodburning stove. Dog friendly.

**Discounted rate for Marnhull villagers booking direct.**



Telephone: 01258 820645  
[info@clockhouse-marnhull.com](mailto:info@clockhouse-marnhull.com)  
[www.clockhouse-marnhull.com](http://www.clockhouse-marnhull.com)



## Yenstone Walling

Dry Stone Walling and Landscaping

All types of stone walling undertaken

Patrick Houchen 01963 371123  
DSWA member 07791 588141

[www.yenstonewalling.co.uk](http://www.yenstonewalling.co.uk)



## STAYSAFE



**QR CODES,  
BACK  
SCAMS AND  
PENSION**

**CHRIS WALTON**  
Oak Digital Solutions

### QR Codes

Quick Response Codes (more commonly known as QR codes) are two-dimensional barcodes that provide a link to an online destination such as a website, app or download link. They are hyperlinks in image form.

To use a QR code point your phone camera at the shape and your device will act as a scanner. A message with a clickable link will pop up on your mobile, allowing you access to a website with more information.

Anybody can create and share a QR code using a mobile app or website. For example, scan the QR code below and your smartphone or tablet will point you towards my own website.

As QR codes become more prevalent. Cybercriminals have already begun to exploit them by embedding malicious links in them. In recent months councils around the UK including Dorset have reported that fake QR codes have been stuck on their parking signs as part of what have been termed "quishing" scams.

The codes lead drivers to a fraudulent website where, instead of paying for their parking, the driver actually shares their payment details and information with scammers.

If you notice a QR code has been stuck on a parking meter don't use it. If you have any concerns, call the car park provider's phone number instead.

### Pension Scams

The insurance company LV have released some worrying research findings. Approximately one in seven, or 7.3 million, UK adults have been the subject of an attempted pension scam in the past 12 months. These people were encouraged via unsolicited calls, texts, or emails to transfer or release money from their pension.

The research was conducted as part of the LV = Wealth and Wellbeing Research Programme, a quarterly survey based on the responses of 4,000 people.

The City of London Police's National Fraud Intelligence Bureau revealed that there were almost 100,000 victims of pension and investment fraud between 2020 and 2023, with victims typically losing an average of £26,773 to scammers.

### How to spot a pension scam:

- Pension cold calls are illegal. Assume that any unsolicited calls are from a scammer. The same goes for emails, text messages or visits. A legitimate company will never call you out of the blue.
- Asking you to make a quick decision is always a warning sign of any type of scam. Paperwork sent to your door by courier for a signature 'to speed things up' should always ring alarm bells.
- Promising low risk and high returns. Scammers may promise high

rates of return on your money. If it sounds too good to be true, it probably is.

- Beware offers of a 'free pension review'. Companies offering free reviews won't be authorised and investments sold as part of a review will be dubious at best or an outright scam.
- Avoid companies providing 'help' to release cash from your pension. You can only take money from your pension when you're 55 or older, except in certain cases, such as poor health. You may be liable to a hefty tax bill if you release money earlier.

### Bank Scams

I'm aware of several people who have lost money due to bank scams recently. One of the most worrying is where you receive a call pertaining to be from your bank's security department. They tell you that fraudsters have attempted to access your account but were stopped by bank security.

They then ask for your help to ensure your account is fully secured. This is simply an attempt to gain information from you which they will then use to try to access your account.

These scammers rely on instilling fear in those they target in the hope that they will be encouraged to give information away.

If you ever receive a call, e-mail or text of this kind and are concerned just contact your bank directly on the phone number on your bank card or statement.

### About Me

I'm Chris Walton, I live in Marnhull and I can help with many of the problems that people experience with personal and home technology. I have over 35 years' experience teaching people of all ages and all skill levels to use a wide variety of gadgetry and software both in the workplace and at home. I provide patient and friendly training carried out at your own pace, in your own home and at your convenience.

You can find out more at [www.oakdigitalsolutions.co.uk](http://www.oakdigitalsolutions.co.uk) or on my Oak Digital Solutions Facebook Page.

After each month's column has been published it will be posted to my Facebook page as well as the blog on my website where you are welcome to comment and ask any questions.

HELP WITH ALL YOUR HOME TECHNOLOGY  
Oak Digital Solutions

[www.oakdigitalsolutions.co.uk](http://www.oakdigitalsolutions.co.uk)

## Marnhull Autumn Charity Quiz 2024

*In aid of Yeovil Hospital Breast Cancer Unit*

Friday 11<sup>th</sup> October

in

Marnhull Village Hall

7.00 p.m. start

£72 per table of 6

*Including Ploughmans Supper and Pud*

Bring your own drink

*Enquiries and table bookings to*

*Andrew Webb 01258 821318 [alwebb@hotmail.co.uk](mailto:alwebb@hotmail.co.uk)*



**DIAGNOSTICS - REMAPPING  
REPAIRS - AIR CON  
WHEEL ALIGNMENT  
SERVICING FOR ALL VEHICLE MAKES**

**FREE COLLECTION AND DELIVERY OF YOUR VEHICLE**

WE ALSO OFFER A RENT A RAMP SERVICE  
CONTACT FOR MORE INFO

☎ 07504 511730 ☎ 01935 362811



CLASSIC, RACE & RALLY CARS CATERED FOR

UNIT 11 / 12  
GIBBS MARSH INDUSTRIAL EST - DT10 2RY  
CONTACT NIGEL MARSH

[WWW.ENGINEEVOLUTION.COM](http://WWW.ENGINEEVOLUTION.COM)

[www.sjcltd.co.uk](http://www.sjcltd.co.uk) 01258 471669 [enquiries@sjcltd.co.uk](mailto:enquiries@sjcltd.co.uk)

**Simon John Christopher Ltd**  
Chartered Accountant & Tax Consultants



**Accounts Preparation  
Self Assessment Tax Returns  
Tax Consultancy**



Drapers House, Market Place,  
Sturminster Newton, DT10 1AS



**The Old Bank  
Bed & Breakfast**

*Comfortable, friendly,  
Family Home  
In the centre of the village*

The Old Bank,  
Burton Street, Marnhull  
01258 821019  
enquiry@theoldbank-marnhull.co.uk

*Wear me Out  
Clothing Library*

Borrow occasion clothes from our clothing library with a variety of outfits for weddings, parties & special occasions, including handbags & hats.

**Hawkers Farm SP8 5LZ**

Contact us on:  
07801 240103 or info@hawkersfarm.org



**S.P. STOCKLEY**  
Plasterers

Mobile: 07867 931562

- Plastering
- Rendering
- Tacking
- Dry Lining
- Dot & Dab

**TAXI – CAR**



*Courteous Lady Driver*

Tel: 01258 820526  
Mobile: 07929 983095

**PARTNERSHIP  
FIRE AND SECURITY**

Contact  
Tel: 01747 858888  
enquiries@partnershipsecurity.co.uk



**Happy Pets and  
Home Service**

House Sitting  
Pet Care  
Garden Care  
Painting and Decorating  
Call Juliet: 07773 566425

**ACCOUNTANCY PLUS  
(DORSET) LIMITED**


CHARTERED ACCOUNTANTS  
AND TAX CONSULTANTS

- Quick Books & Sage Expertise
- Accounts Management
- Personal & Corporate Taxation
- Book-Keeping

**01258 820709**

Email: info@accountancyplusdorset.co.uk  
Contact: Mr Kim Harden, FCA, FCCA  
4 New Street, Marnhull DT10 1PY

**SAXON  
ROOFING SERVICES**



6 New Street, Marnhull DT10 1PY

Tiling, Slating, Leadwork, Timberwork  
New & re-roofing work undertaken

Nick Upshall  
Tel: 01258 821231  
Mobile: 07801 851079  
www.camelotbuilders.co.uk

**AJS Plumbing & Heating**  
Plumbing & Heating Engineer

Tel: 01963 400503 or 07814 038852  
Email: office@ajs-plumbingandheating.co.uk  
Website: www.ajs-plumbingandheating.co.uk



Boiler Servicing & Maintenance  
Air Source Heat Pumps/Ground Source Heat Pumps  
Bathroom Installation Underfloor Heating  
General Plumbing  
Landlord Certificates & Power Flushing




**MARNHULL  
COMMUNITY CAFÉ**

**Friday October 18th**

Pop in, we'd love to see you  
Marnhull Village Hall, 10-12  
Tea, Coffee, Homemade Cake  
& good company. Everyone welcome  
and it's free!!

The village recycling bins will also be open during this time



**POUND CLASSES**

Pound is a cardio jam session inspired by the infectious, energising and sweat-dripping fun, Instead of listening to music you become the music in this exhilarating full body workout that combines cardio, conditioning and strength training with yoga and Pilates-inspired move using ripstix and a exercise mat, also B' Active with Hayley which is a little body conditioning with small weights and resistance bands along the way pm for more details Email hayley.sandell@gmail.com

**Tea With Friends**

Our October date is Wednesday the 9th.  
Join us 2.30 to 4pm at the Methodist Hall.  
Cuppa, cake and a chance to chat.

In November there will not be an afternoon get together but there will be a Coffee Morning on Friday 22nd November 10am to 1md at the Methodist Hall



Had a Marnhull moment last month and completely forgot to send in my report. Luckily there was not a lot of excitement to report but normal service will now be resumed.

The Remembrance period is now looming and things start to get busy now preparing the collecting boxes and organising the Remembrance Sunday parade and service on the 10th November.

All are welcome to attend the service and parade and similarly the service and silence on Armistice Day at 11am.

There will be boxes in all the shops and businesses in the village so if you miss your collector there will be plenty of opportunities to buy a poppy this year.

Entertainments officer Tony Junge is already hard at work arranging the events for next year including three professional tribute acts featuring Dolly Parton, Tina Turner and Freddie Mercury. There will also be the return of some old favourites. Watch this space.

On November 16th we will be holding the annual fish 'n' chip Poppy Quiz. The price this year will be £10 a head and doors will open at 6.30 for a seven o'clock start.

Team sizes are very flexibly and you can pay on the day but a phone call or email to let me know you are coming would be good so I can tell Mr Chip's how many to cater for.

Starting this year we will also be hosting some Dorset Superleague Darts matches on some Saturdays. For lovers of the game the evenings will be open to spectators.

**October Entertainment**

**Saturday 5th Oct – The Dale Fender Band**

**Saturday 12th Oct – Superleague Darts**

**Monday 14th Oct. - Bingo 7pm**

**Saturday 19th Oct – Mustang Sally**

**Saturday 26th Oct – Baz and Debs**

**Monday 28th Oct – Bingo 7pm**

**For Branch Business contact Jack Whitehead on 01258 820800**

**Or whiteheadjack51@gmail.com**

**Club business contact Tony Junge on 01258 820397**



**C. BRISTOW & SON PROPERTY CARE**  
INTERIOR & EXTERIOR SOLUTIONS

30 years experience | Marnhull based

- General Property Maintenance
- Interior & Exterior Decoration
- Electrical & Plumbing
- Renovation & Home improvement
- Bathrooms & Kitchens

All works considered, no job too small.  
**07539 497828**



**Hawes Arborists**

- All aspects of tree surgery
- Dismantling and felling
- Pruning
- Tree disorders and solutions
- Tree pest and disease analysis

Telephone 01747 850 253  
e-mail [info@hawesarborists.co.uk](mailto:info@hawesarborists.co.uk)

We are very proud to have received Arb Approved contractor status and are covered by the Government accredited Trust Mark scheme.  
NPTC Certified • Tech.Arbor.A Qualified  
All work carried out to BS3998 Standards






**BLACKMORE VALE FOOT CARE**  
EST 2005

Foot Care in the Comfort of Your Home.  
Corns, calluses, problem nails etc.  
Friendly, female practitioners


[www.bmvfootcare.co.uk](http://www.bmvfootcare.co.uk)  
01258 820203 | [gillian@bmvfootcare.co.uk](mailto:gillian@bmvfootcare.co.uk)



**Vale Electrics**

- New Installations
- Rewires
- Replacement Consumer units
- Condition Reports
- Fault Finding

Tel: 01258 821420 Mob: 07740403033  
Email: [valeelectrics@hotmail.co.uk](mailto:valeelectrics@hotmail.co.uk)  
8 Plowman Close, Marnhull, DT10 1LB




**Peter Jackson Funeral Services**  
Independent Family Funeral Directors

**Henstidge**  
01963 362570

**Gillingham**  
01747 833757  
[office@peterjacksonfuneralservices.co.uk](mailto:office@peterjacksonfuneralservices.co.uk)

FUNERAL PLANS FROM **Golden Charter**  
Smart Planning for Later Life



**PESTWRIGHT**


Happy to help if you have problems with **Rats, mice, moles, squirrels, wasps etc.**  
BPCA qualified. Insured

Call Jim on 07854395112

R&S **LEWIS JOINERY**

Purpose made fitted wardrobes  
bookcases, cupboards,  
hardwood windows,  
doors & gates.

[lewisjoinery@hotmail.com](mailto:lewisjoinery@hotmail.com)  
Workshop 01963 363862



**POUND**  
ROCKOUT. WORKOUT.

CLASSES IN BROADSTONE, WINGANTON, MARNHULL, MOTCOMBE, OKEFORD FITZPAINE

**CONTACT: HAYLEY SANDELL, POUND PRO**  
07786 553889  
[HAYLEY.SANDELL@OUTLOOK.COM](mailto:HAYLEY.SANDELL@OUTLOOK.COM)

**GRASSBY & CLOSE FUNERAL SERVICE**

4 Innes Court,  
Sturminster Newton,  
Dorset DT10 1BB

**01258 471024**  
[www.grassbyclose-funeral.co.uk](http://www.grassbyclose-funeral.co.uk)



## RAILWAY NEWS

A team of happy model railway enthusiasts have recreated Sturminster Newton Station.

Visit the museum now to see it!

This is a highly-accurate model of the station and environs displaying the context of the old Somerset and Dorset railway line, which closed in 1966, to



the cattle market and milk factory; of which virtually all traces have now disappeared.

The layout is fully interactive with trains running, sounds

playing, signals moving and a lighting change to a night sequence; all driven by push buttons that children and adults alike can play with.

In addition, visitors can press to see a varying display of old pictures of the area compared to modern photographs of the same locations whilst the actual place on the model will be highlighted so they can see where it all fits together.



## MARNHULL HORSE RIDERS



Over the past few years, have been working on creating an exciting new track which is now ready to ride. As riders know, it's challenging here on the roads but we have been doing everything we can to improve things and provide us a small piece of safe riding away from the roads in the village.

Further details can be found on our Facebook page or message me for more info.

We have invested a lot of time, hard work and raised our own funds to create this riding track.

As this is only one of only two off road tracks we have we have in Marnhull, we would therefore appreciate it if walkers could use one of the other 136 footpaths that are available in the village, that as horse riders, we cannot ride.

Please let us enjoy this horsey space – whether we want to walk it, trot it, or have a good hill canter – please remember there will be horses using this track on a regular basis, and for your safety, we would appreciate it if you could keep to the footpath that runs alongside the track.

Repair works are due to start shortly on the far end of the Ham Lane track (where it crosses Mill Lane).

This route is safest and best approached from the end of Hains Lane where visibility is better.

If you ride or carriage drive – or do both - would you be interested in exercising my 16 yr, 13.2hh Fell pony? Equine experience is necessary.

If you'd like to come with me driving (training can be provided), please message me. Home set up in Marnhull. Contact Rosie 07711 089403

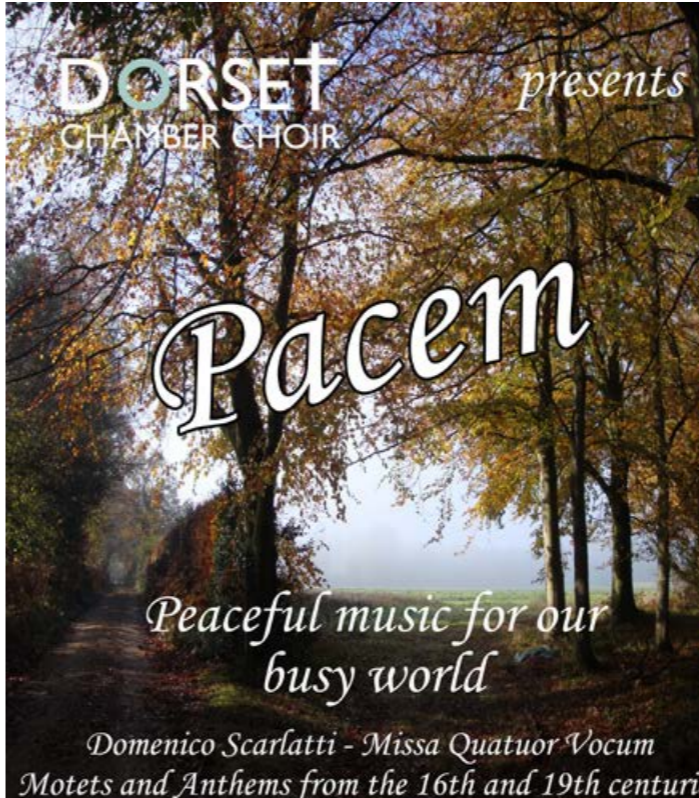
### Dorset Chamber Choir Concert "Pacem"

Come and join Dorset Chamber Choir for an evening of beautiful music for our busy world on Saturday 19th October at 7:30 pm at St Hubert's Church, Blandford Road, Corfe Mullen BH21 3RG

"Pacem" Featuring Scarlatti – Missa Quatuor Vocum and more

Tickets £12 (under 16s free) on the door/choir members/or order online

See [dorsetchamberchoir.com](http://dorsetchamberchoir.com) for more information/details



**DORSET CHAMBER CHOIR** presents

**Pacem**

Peaceful music for our busy world

Domenico Scarlatti - Missa Quatuor Vocum  
Motets and Anthems from the 16th and 19th centuries

Saturday 19th October, 7:30 pm  
Tickets £12 (under 16s free)  
from choir members  
or at the door

St Hubert's Church  
Blandford Road  
Corfe Mullen  
BH21 3RG



**Wessex Internet**

Register your interest!

**Say hello to ultrafast fibre**

Enjoy effortless video calling and buffer-free streaming with fibre broadband from Wessex Internet.

- Lightning fast**  
Download speeds up to 900 Mbps
- Reliable connection**  
Zero buffering or annoying drop outs
- Local support**  
A friendly support team based in Dorset

Full fibre is coming to **Marnhull**. Visit [wessexinternet.com](http://wessexinternet.com)



**Remedial & Recovery Massage**

In the Comfort of your own Home

Highly Experienced and Fully Insured

**Elements**  
MOBILE MUSCLE RECOVERY MASSAGE

**Mobile Massage in Marnhull**

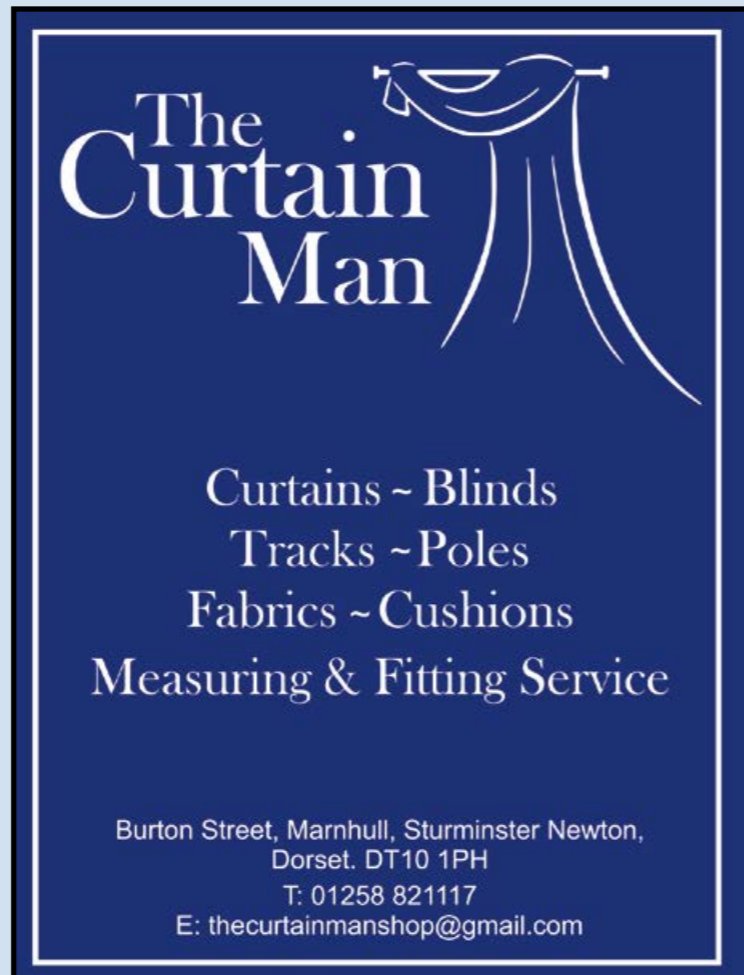
Elements is a local, convenient & comforting mobile massage service dedicated to delivering clients a professional and enjoyable mobile experience at home, in the office, or in your holiday let.

A dedicated service to help relieve your aches & pains.

[www.elementsmobile.co.uk](http://www.elementsmobile.co.uk)

☎ 01258 269789    ☎ 07902 999136

Google Reviews ★★★★★  
facebook ★★★★★



**The Curtain Man**

Curtains ~ Blinds  
Tracks ~ Poles  
Fabrics ~ Cushions  
Measuring & Fitting Service

Burton Street, Marnhull, Sturminster Newton,  
Dorset. DT10 1PH  
T: 01258 821117  
E: [thecurtainmanshop@gmail.com](mailto:thecurtainmanshop@gmail.com)

# Animal Awareness



**A HOLISTIC APPROACH TO AFTER DEATH CARE**

**SALLY PALMER-WALTON**  
Wild Life Wellness

Last month I wrote about giving our pets the best death possible. This article will focus on managing your pet's remains and how you might commemorate their passing.

### Saying Goodbye

There are two stages to saying goodbye – sharing time together in a significant way leading up to your pet's passing and saying goodbye after their death.

If you know you're in the last few months or weeks before your pet will be euthanised you're in the fortunate position to say goodbye. How you spend your time with your pet will be unique to you, but here are some ideas:

- Creating paw and/or nose print keepsakes
- Arranging a final photo session
- Spending quality time together, perhaps in favourite places like the woods or beach
- Inviting your pet's friends over – human and animal
- Providing all your pet's favourite food for them
- Remembering to be truly present when you're with them
- Sitting and talking to them, telling them how privileged it's been to have them in your life. They might not understand all your words, but they will feel your love and appreciation.

All the activities above will help you create lasting memories. Memories which will help ensure your pet knows how much they are loved. Memories which you can take comfort from in the time after their passing.

If you're at a loss where to start, a Pet End-of-Life Doula can help guide and support you in creating memories tailor-made for you and your pet.

### After Death Care

What happens to your pet's remains after death is totally in your control. Whether your pet died naturally or through euthanasia you can decide what you do from the point of death onwards. One thing many vets, animal therapists and communicators will stress is that, if you have other pets in the home, please allow them the chance to view the body of their deceased friend.

When they see and sniff their friend's body, they can process what has happened. Some pets might just 'get it', others may grieve. Our beloved dog, Milo, died on the operating table this summer.

We drove to Wimborne and collected his body from a very surprised veterinarian surgeon, so we could bring him home to mourn with our other furry companions. His death was sudden and unexpected and we all needed time with his body to process what had happened.

So many vets don't expect the owners to want to deal with their pet's remains, and it's true, some owners don't want to, and that's fine too. But know you have a choice, there's no conveyor belt process you must submit to.

Some find it helpful to take care of their pet's body. Perhaps you might like to wrap them with a special blanket and place them in their basket, including toys, flowers, and other significant items. They can be taken to the crematorium or to their burial in this way.

### Burial:

Burial can take place in your own plot of land or at a local pet cemetery – bear in mind that the latter are few and far between. At the burial you can share memories or perform an End-of-Life ritual specific to your spiritual or humanist beliefs.

### Cremation:

This is by far the most popular option. Vets will arrange this for you, by storing your pet's body until the crematorium collects them. However, they usually work with just one crematorium, limiting your choice.

Another option is to organise the cremation yourself. There are several pet crematoriums near us. Some are highly functional, whilst others offer a more personal service. As a Pet Doula myself I can highly recommend Companions at Peace, nr Wincanton. They're an independent family run business, and they really do care for the animals and bereaved owners they serve.

We took Milo there and not only do they have a beautiful 'chapel of rest' where you say goodbye to your dear companion, but they only provide individual cremations. I asked to 'spot check' their cremator to ensure myself that the ashes returned would be Milo and only Milo. They didn't hesitate to show me around and answer all the questions I had.

Not everyone can cope with driving their pet to a crematorium. Don't be afraid to ask another relative, friend or even Pet Doula to do this for you. Sometimes the crematorium will collect your pet and return their ashes too.

When your pet's ashes are returned you again have the option to undertake some kind of memorial ceremony, whether you decide to scatter or keep them.

I've written this article to remind you that there is no 'one way' to honour the death of your beloved companion. It's a hugely bitter-sweet moment, a time of celebration and grief.

You've had the privilege to live by the side of an extremely loyal and loving individual. Please be kind with yourself and do exactly what you feel is right when saying goodbye.

HOLISTIC ANIMAL HEALING AND AWARENESS  
Wild Life Wellness  
[www.wild-life-wellness.co.uk](http://www.wild-life-wellness.co.uk)



**Paul Woodrow**  
Home and Garden Services



Fully insured garden maintenance and handyman service across the Blackmore Vale

**07392727584**

office@woodrowhomeandgarden.co.uk @woodrowhomeandgarden  
www.woodrowhomeandgarden.co.uk

**OAK DIGITAL SOLUTIONS**

HELP WITH ALL YOUR HOME TECHNOLOGY

- e-mail accounts, software and apps
- Wi-Fi connections and printer problems
- Setting up new equipment
- Friendly personal training in your home

computers, mobile phones, tablets, laptops  
printers, Wi-Fi, smart TVs, e-books and more



Call Chris on **07758 032062**  
oakdigitalsolutions@gmail.com  
www.oakdigitalsolutions.co.uk

**NorDDis**  
North Dorset Disability Information Service

**We can provide the following:**

- New & used equipment
- Hire equipment
- Disposable items
- NHS hearing aid batteries
- Information & advice
- Volunteer opportunities
- Call us for information

Open 10am to 4pm Tues, Thur & Fri  
10am to 1pm Sat.

3 Newbury, Gillingham  
SP8 4QX Opposite Lidl)

Te. 01747 821010  
www.norddisorset.org.uk  
Reg. Charity No. 1110328

**Vale Auto Services Ltd**  
The Vales Driving Force

**All makes and models serviced**  
Fiat, Isuzu and Subaru specialists

FIAT ISUZU SUBARU Lanoguard

A first class service at less than half main dealer rates

We can service your vehicle without affecting the manufacturer's warranty

Electrical and Mechanical Diagnostic, Repair & Maintenance

- MOT Testing • Tyre Replacement • Puncture Repairs
- Wheel Balancing • 4 Wheel Laser Alignment
- Dealer Level Diagnostic Equipment
- Professional Work at Affordable Rates
- Courtesy Cars • Local Collection and Delivery Service

ALL WORK CARRIED OUT TO THE HIGHEST OF STANDARDS  
Under chassis steam cleaning and rust treatment now available

Bazeland Hill, Shaftesbury Road,  
Henstridge, Somerset BA8 0TD  
Tel: **01963 362843**  
valeautoservices.co.uk

**Revsol Property Management Ltd**

offer a complete service covering :

- Management of Property lets both short and long term
- Holiday Letts
- Keyholder service
- Property security
- Regular and one-off cleaning service
- Property maintenance

For further information call **Duncan** on  
Main line: 01258 820870 mobile: 07966 016686  
or email revsolpropertymanagement@outlook.com



**OUR LADY'S CHURCH**

**Are you are interested in finding out what Catholics believe;** or want to consider becoming a Catholic? Christian faith is a way of life – it is about seeing the world in the light of the gospel and trying to live our life in accord with that. Everyone lives their own life with all the ups and downs, all the disasters and successes that make it up. For Christians that is the teaching of Jesus and the faith that the Church presents to us. We are all invited to live our own particular life guided in that way.

Contact Fr. Cletus or Deacon James: James.Mackain-Bremner@prcdtr.org.uk

**CAFOD Sudan Crisis Appeal**

**What is happening in Sudan?**

The war in Sudan has forced millions of people to flee their homes, creating one of the world's largest displacement crises. Now the situation has deteriorated rapidly, and those caught up in the middle of the conflict are facing yet another crisis – hunger.

As families fleeing their homes to escape the violence run out of food, water and medicine, the UNCHR reports that, in total, approximately 24.8 million Sudanese (nearly half of the country's population) are in urgent



need of humanitarian assistance.

Kayode Akintola, CAFOD's Head of Region for Africa, and Telley Sadia, Country Representative for Sudan, joined us recently to explain what is happening.

Families in Sudan are facing extreme hunger. 25 million people need urgent help. CAFOD and our Church partners are there, ready to help.

cafod.org.uk/sudanappeal.

You can also text Text CAFODSUDAN to 70450 to donate £10.

**THE METHODIST CHURCH**

There is definitely an autumnal nip in the air as I write and the wet weather is forecast to persist over the next few days. I'm not sure if all has been safely gathered in yet, but sure it will have been by Sunday 6th October when we hold our Harvest Festival (for which the service starts at 11.00, not 10.00). We enjoy decorating the church ready for the service with some fresh 'harvest' goodies but also many in tins as that way they last longer and so are more useful for the Food Bank recipient.

How often we take our wonderful supply of nourishing food for granted. The farmers and growers, the processors and packers, the transport firms and the drivers, the many shops, small and large, and the shop workers all combining to enable us to buy a huge variety of food and drink , so

**Let's say a huge 'THANK YOU' to them all!**

And let's not forget that this abundance initially comes from nature and God's wonderful and extraordinary world which we must cherish. We should indeed appreciate and give thanks for our good fortune. Let's also remember those parts of the world that do not have food security, whether caused by man's inhumanity and war or by extremes of weather, and do what we can to assist those in need perhaps by donating to charities working with the hungry.

The Girls' Brigade is planning to hold a service to recognise the girls' achievements on Sunday 13th October starting at 10.00 in the Methodist Church. You are very welcome to come along; it's lovely to see how well the girls do.

Gillian

**BISHOPS LETTER**

**A Gift to the Church**

I write this the day after the funeral of the Rt Revd Mark Santer, former Principal of Westcott House Theological College, and Bishop of Birmingham, theologian, and pastor.

Mark ended his life and ministry in this diocese, with permission to officiate he continued to serve these last few years in the parish church of St Aldhelm's, Branksome. His funeral at the church was a wonderful



celebration of a life well lived, of his rich ministry and the gift of friendship which so were in receipt of.

We have just under four hundred active retired clergy in the Salisbury diocese. Priests and deacons who have not only served for many years in stipendiary or self-supporting ministry in dioceses right across the Church of England and overseas, but who are willing to continue to offer their talents and experience to us here.

Bishop Andrew and I with our secretaries manage the renewal of their permission to officiate every three years, and new safeguarding training and DBS checks are part of this. This is a tremendous commitment and a gift to the church for which we must be truly thankful. We also, as bishops, meet all those retired clergy moving in to make sure they feel welcomed and supported with ongoing support offered through our network of deanery retirement officers, and diocesan retired clergy officer.

Many of our retired clergy are involved in active ministry in their local church, as well as taking funerals and weddings; others offer spiritual direction, mentoring and coaching or act as reviewers for our ministry review scheme or as deanery and diocesan retirement officers, regularly staying connected with those with PTO and retired clergy who are inactive.

This is all a very real reflection of the fact that God continues to use us in many and varied ways throughout our life. Indeed, Bishop Mark preached his final sermon on Easter Sunday at the age of eighty-six!

1st October is the International Day of Older Persons. A day to celebrate the gifts of all those who continue to show us the love of God through their generosity, positivity, and humility. If you include yourself here, thank you!

+Karen



**ST GREGORY'S C OF E PRIMARY SCHOOL**

We have made a fabulous start to the new academic year of 2024-2025 over at St Gregory's CE Primary School (part of the Pickwick Academy Trust).

It was wonderful to welcome the children back to school on Wednesday 4th September with big smiles on their faces and exciting stories to share about their summer break.

We started the term with a special Church service to welcome all our new starters in Reception.

Rev. Gaenor lead a lovely service where all our school bags were blessed for the year ahead. Our newly recruited Worship Ambassadors did a great job supporting in the church too.

This term we also extended a warm welcome to a new teacher in Badgers class, Miss Gale, as well as a new Executive Leadership team who are working across both St Gregory's School and St George's School in Bourton.

Mrs Farndale is the Executive Headteacher of both schools and is ably assisted by Mrs McCall as Executive Deputy Head and Mrs Shears as Inclusion and SEND leader.

Following a successful 6 years as Headteacher at St George's CE Primary School in Bourton, Mrs Farndale is delighted to be leading the learning at St Gregory's CE Primary School working with the wonderful staff, children and families, who enjoy all that the school has to offer. Please do pop into school to say hello if you are passing.

As a small school the children can access learning in an environment that allows an individualised approach to their academic and personal development.

At St Gregory's, we are committed to ensuring that the children have access to a broad curriculum that brings learning to life and builds on the children's individual interests and ideas.

Our school is a special place with a unique sense of community which is built on our core Christian Values – Hope, Faith and Love.

Our website gives a 'flavour' of what life is like as a pupil here, but it is not possible to appreciate all that we have to offer, without a visit to the school.

We have two open days coming up Thursday 19th September and Wednesday 2nd October however every day is an open day at St Gregory's and visitors are always welcome. Please call the school office to arrange a time to come and have a look around.

Throughout the year we have lots of events planned and excited opportunities for the children. Our new weekly newsletter shares all information about what is happening in the school so please do have a look.

**Hedgehogs Class**

What a lovely start Hedgehogs have had to the new school year, getting to know each other and finding their way around the classroom as well as getting outside to explore the school grounds and their wonderful outdoor classroom.

It is as if they have always been a part of the school. We are all incredibly proud of them. In their Curious City Enquiry they have been thinking and talking about 'Who are we?' As part of this they have shared their knowledge of where they live, who they live with and who is in their family.

They have also looked at the book 'You Choose' and talked about their likes and dislikes. They all seem to like similar things which is good news!



Next week they move onto their new Enquiry based on the book 'The Dot' where they will start to find out about art and being an artist. They are all looking forward to getting the paints out.

**Badgers Class**

Badger Class have settled into the new school year really well! There has been lots of change this year with new teachers, new classmates and a new classroom!

They have also worked hard as a class to display the new school golden rules – Stay Safe, Be Respectful and Try Your Best – and have been rewarded with lots of stickers!

Since the first few days back they have been working hard as authors to write their own shape poems. They have learnt all about what poems may include such as adjectives, similes and alliteration and have spent the first week of the term coming up with their own poetry! Lots of fun was also had in an Alphabet Alliteration game!

The children in Badgers have also started their new curriculum Enquiry. In Badgers class they split for Curious City lessons; Year 2 are working with some of Hedgehog class on the Enquiry 'What do Artists do?' whilst the Year 3 children are joined by Year 4 to investigate the question 'Where Does Darkness Come From?'

They have all started off their Enquiry lessons with some engage activities. As part of their engage lesson, Year 3 & 4 started off by investigating what the opposite of darkness is and why it is so important by doing some blindfold activities! It's safe to say they all agreed they definitely need light to be able to see!

**Foxes Class**

It has been a fantastic start to the new term in Foxes! Our Year 6 students are settling into their responsibilities and leadership roles around school. They had a working lunch with Reverend Angus



to discuss their important roles as Worship Ambassadors for this year. They are off to a great start in supporting our school community!

In class the children in Year 5/6 have started their first enquiry of 'What does Earth look like from the Solar System?'. They have been Artists and Scientists investigating space, sparking awe and wonder while examining satellite images from the ISS. As part of this learning, the whole class worked together on dot-work Earth paintings, using paint to create beautiful representations of our planet.

In Maths, all years have been focusing on place value and partitioning numbers.

Year 4 had fun using manipulatives to strengthen and demonstrate their understanding of these key concepts.

They've also made a fantastic start in their Author Writer sessions, sentence stacking using the book - Lights on Cotton Rock - as a stimulus for writing a narrative. They have produced some wonderfully rich and detailed writing already.

In PE, the children have been having fun with tag rugby and have begun gymnastics, practicing different types of rolls and movement skills. They have been showing great teamwork and enthusiasm in both activities.



As always, it has been so lovely to see the children back at school, excited to be with their friends and making new friends. Most children came through the gate on the first day, beaming and happy to say hello. Already, everyone has settled into their new classes and are ready to learn. Thankfully, the rainy weather hasn't dampened their enthusiasm.

**St Mary's Explorers**

It has been wonderful welcoming back our preschoolers after their summer holiday. They have been busy getting used to our daily routines. Our topic has focused on themselves and their families. Through daily conversations we develop the children's language and we've enjoyed talking to the children about their family life. Later this term we are looking forward to getting out and about in nature and exploring the changing season.



**St Mary's Catholic Primary School**  
Headteacher - Mrs Sharon Belts  
office@stmarymarnhull.dorset.sch.uk Telephone: 01258 820417

Do you have a child due to start school in September 2025?  
Do come and visit St Mary's on a Monday morning, please see available dates below. We look forward to showing you around our lovely school and seeing our fantastic children enjoying their learning.  
Please telephone or email to book a date.

Time: 9:30 am  
Dates: 3<sup>rd</sup> October, 8<sup>th</sup> October, 18<sup>th</sup> October 2024

The closing date for applications on 15th January 2025  
Dorset School Admissions Contact: <https://www.dorsetcouncil.gov.uk/education-and-training/schools-and-learning/apply-for-a-school-place/apply-for-a-school-place>  
Please see St Mary's Catholic Primary School website for further information on our admissions policy. <http://www.stmarymarnhull.dorset.sch.uk/web>

**St Anthony's**

We have been delighted with how well our Reception children have settled this term. They have picked up school routines quickly and they are doing everything with smiles on their faces. It has been wonderful seeing them making and developing friendships. This term they are learning

about what makes them unique and special. It's a great opportunity for the children to talk about things that are familiar to them like their likes and dislikes. The children have begun learning their letter sounds and are enjoying our multisensory phonics sessions. In our maths circle the children have been singing counting songs and showing numbers using their fingers.

**St Mark's**

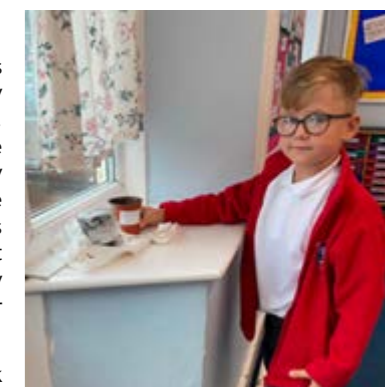
The children have returned to school after the summer holidays with buckets of enthusiasm for their learning. It was so lovely to see them all come through the school gates on the first day with big smiles on their faces. Since coming back, we have been having lots of fun and revisiting old learning to refresh our memories. We have been doing some name writing and number recognition. On Monday 9th September, it was National Teddy Bear Day, so we felt it was only right to have a teddy



bear's picnic. We had some treats and enjoyed some colouring with our teddy bears. We are really looking forward to the school year ahead and having lots more fun but learning lots too. We will be looking at seasons in Science and where we are in the world in Geography.

**St Francis'**

The children of St Francis' class have settled in really well. They have had a great start to the term, learning all about the Stone Age to Iron Age during their Literacy and History lessons. They are studying how different sources help us to understand the past and how modern technology has also helped advance our understanding.



In Science we are starting to look at what plants need to thrive and how removing any of these elements can affect their growth.



We are looking at place value and applying our knowledge in both our Numeracy lessons and our Maths Challenge Club sheets.

**St Albans'**

It has been lovely seeing the children back from their summer break with energy and enthusiasm. They have enjoyed the opening few chapters of our class novel 'The Nowhere Emporium' which has inspired some fantastic descriptive writing. The children have also been finding out about the motives

behind various explorers and their quests to discover new land during our topic on The British Empire

**MARNHULL ENTERTAINS**

in association with

**FILM BANK**

presents

**THE FALL GUY**

Marnhull Village Hall

22 October 2024

at 7.30pm

Doors open 7.00pm

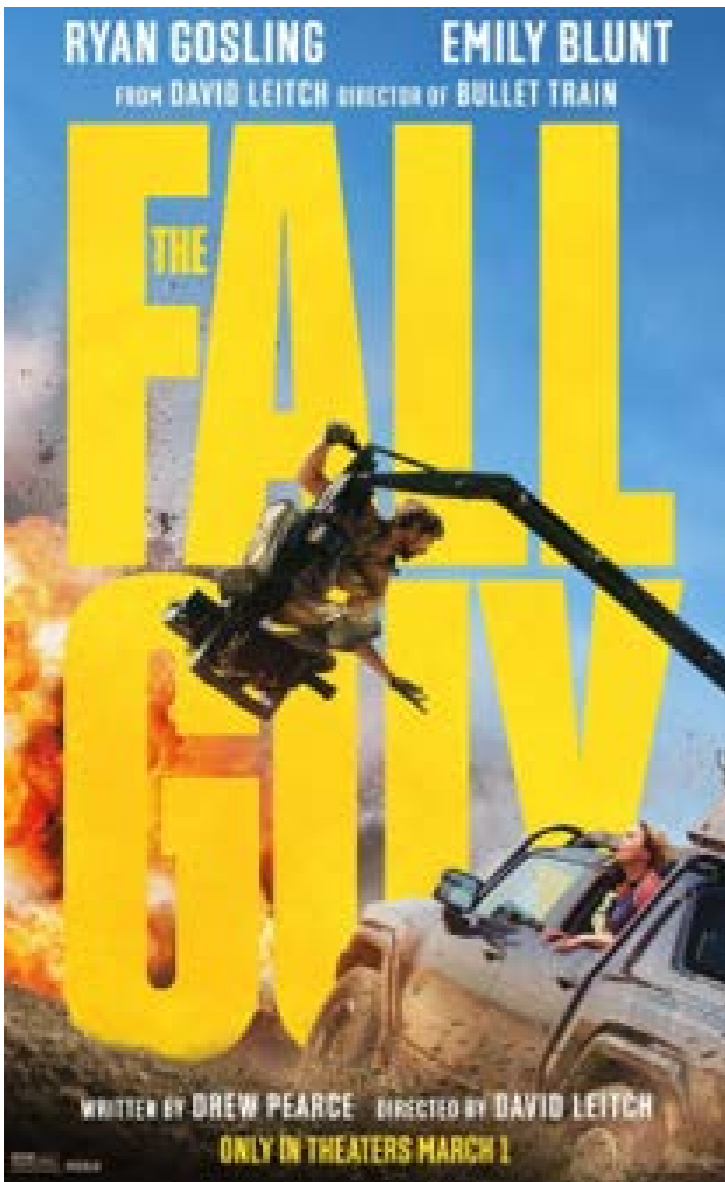
Tickets: £5.00

Available from:

Robin Hill Stores: 01258 820959 or Marnhull Stores: 01258 820116

After leaving the business one year earlier, battle-scarred stuntman Colt Seavers springs back into action when the star of a big studio movie suddenly disappears.

As the mystery surrounding the missing actor deepens, Colt soon finds himself ensnared in a sinister plot that pushes him to the edge of a fall more dangerous than any stunt.



Sturminster Newton  
Heritage Trust

# The Railway Returns!

Check out the new model railway in the museum  
Driven by push buttons, trains, sounds, signals, lights and photos!



Everyone is welcome, come and play with the highly accurate new railway.



SAVE THE DATE!

SERO\* invites you to a

## RACE NIGHT

Sunday 24<sup>th</sup> November

Doors open at 7 pm races start at 7.30 pm

Child Okeford Village Hall



All the thrills of a day at the races!  
The races all feature 2 runners and are shown on a projection screen, with guests betting on the outcome.

Tickets £15.00

(to include light two two-course supper)

Bar, Silent auction and Raffle

To purchase tickets email: [serocharity@gmail.com](mailto:serocharity@gmail.com)

Or ring Julie on 07749 486733

Or Kate on 07725 245066

- SERO – raising funds for local causes and Julia's House Children's Hospice.

**Williams Florist**  
floristry & gardening

Do you have something special to say?  
Full florist service available  
Local delivers & Florist relay members

Say it with flowers...  
Station Road, Stalbridge  
Dorset, DT10 2RQ  
Tel: 01963 362355  
Email: [williamsflorists@live.co.uk](mailto:williamsflorists@live.co.uk)  
[www.williams-florist.co.uk](http://www.williams-florist.co.uk)

**ASA architects**

Based in Shaftesbury · Projects throughout Dorset, Wiltshire, Devon, Cornwall, Somerset and beyond.

Workshops, Bin sheds, (and in your garden), Commercial, Retail, Sports, Education, Master Planning .....

New Build • Extensions • Conversions • Listed Buildings • Refurbishment  
All Drawing Work For:  
Planning Applications • Building Control • Construction

**Tel: 07770 421624**  
Email: [andystrange@btinternet.com](mailto:andystrange@btinternet.com) · [www.asa-architect.co.uk](http://www.asa-architect.co.uk)

**FREE CONSULTATION**

# OXFORD

Building & Carpentry Ltd

- Complete House Renovations • Staircases Remodelled
- Kitchen And Bathroom Installations • 1st And 2nd Fix
- Cut And Truss Roofing • Replacement Doors

Contact Pete Oxford T: 01258 820850  
M: 07970 156735 [oxfordp@yahoo.co.uk](mailto:oxfordp@yahoo.co.uk)  
Chippets, Chippel Lane, Marnhull DT10 1NN

## DECORATOR

& HANDYMAN

Professional painter / decorator / handyman Experienced, friendly, local & reliable Richard Weetman  
07787 558862  
01258 920677  
[richard.weetman@hotmail.com](mailto:richard.weetman@hotmail.com)

## Boilerwise Ltd

### Specialist Boiler Engineers

Repair, Service, Maintenance and Replacement of OIL and GAS Boilers. Heating System Fault Diagnosis and Repair. Landlord Certificates, Systems Surveying and Power Flushing.

**01258 474605**  
24hr Gas Safe and Oftec Registered Engineers

572546 C6413

## Marnhull Cars

Local & Long distance Taxi  
Hackney & Private hire  
Comfortable Mercedes  
Benz cars

Call or text Sheldon  
07931911279

## BURROW

Replace your Septic Tank with a Wastewater Treatment Plant and protect the value of your home

Most septic tanks in locations with heavy soil, or located close to a ditch, stream or river need to be replaced. We are a local specialist and since 2019 we have helped almost 200 homeowners to upgrade.  
Contact us for free advice.

[burrow-environmental.com](http://burrow-environmental.com) 01935 507 508

**MARNHULL PLAYERS PANTO**

We have a full cast now and they are ready to get rehearsals started in October. This is an exciting time where we can see things come together and we know that once we start rehearsals, we will see it come to life. We have scenery already started with the amazingly talented Helen Chalkley, Costumes are being sourced and we have some already. Music and light are in the capable hands of Ian Kiddle, who is awaiting rehearsals to get those all sort and to the director's liking.

We are making much need adjustments to the stage extension, we are hoping to have them completed sometime in the next couple of months, so we can make full use of the space.



**Here is a word from our lovely Director Fraser**

'A village Pantomime is a marvellous expression of community spirit. Unlike a professional show, there is little need for publicity because friends and relatives and the good people of the village pack the house for each performance.

Those taking part give up a lot of time and energy but enjoy a lot of fun, camaraderie and a sense of achievement.

Unfortunately for me I don't live in the village but in more than a quarter century I have visited friends, the shops, the fetes, theatrical productions as well as attending Deborah Chisman's splendid Art Classes.

I covet Marnhull! No surprise, then, that I jumped at the chance to direct this winter's pantomime.

Being retired from a career of acting, presenting BBC's Play School, teaching Drama and directing nearly 100 plays (75 of them at Port Regis) I am delighted to have the chance to get involved in the Drama and I must say that a most exciting element is working along with my friend the script co-ordinator Jo Wilkinson.

Knowing most of the cast and crew from having worked with them on BEAUTY AND THE BEAST last year, Jo has chosen PETER PAN to suit. It is marvellous to witness her creativity and share in it a little. Do put it into next year's diary!' Fraser Wilson.

Would you like to be involved in this fun pantomime group? Even if you don't want to be on stage, there's plenty of roles to help out with - no experience needed, we would love to have you on board.

Contact Emma at [marnhullplayers@gmail.com](mailto:marnhullplayers@gmail.com)

Thanks

The committee and Cast

**Sturminster Newton Floral Group**  
(flower arranging club)  
**our next meeting will be on**

**Wednesday**  
**9th October 2024**  
**2:00pm**

at The British Legion Hall  
Sodom Lane, Marnhull DT10 1HR

When we will be having an in-house workshop to create

**An Autumn Basket**

We will give a short demonstration to help you along so if you would like to join us you need to bring either flowers from your garden or a couple of shop bought bunches a little foliage, plus a basket with a liner and a pair of scissors.

**Visitors are always welcome**  
**admission to non-members is £7**  
**For more details phone 01747 685837**




Dorset & Guernsey Area of NAFAS  
National Association of Flower Arrangement Societies



**ROAD CONTACT VACANCIES**

We have two vacancies for Road Contacts. This is a voluntary service offered by Marnhull Village Care and provides a network of contacts throughout Marnhull. The primary role is to welcome newcomers into your patch.

You might be the first person to speak to them once they have surfaced above the packing cases and you can not only give the newcomer a warm, fuzzy feeling of being welcomed into the village, but also provide a point of contact if they should need support.

If you live in either of the two areas below and would like to offer your support

1. Lovells Court
2. Burton Street (Ham Lane to Love Lane/Old Exchange)

Please contact Lesley Ruth by email : [lesleyruth4@aol.com](mailto:lesleyruth4@aol.com) or phone the Village Care number on 07777 559076

**BEAUTY & MASSAGE THERAPY**

SARAH JAMES  
B.A.B.T.A.C | L.T.E.C | C.I.B.T.A.C

Remedial massage and Aromatherapy.  
Bespoke Facials including LED therapy.  
Electrolysis, Waxing, Lash and Brow treatments.  
Manicures and Pedicures including Shellac.



BLAKES COTTAGE, CARRAWAY LANE,  
MARNHULL, DORSET, DT10 1NJ  
TEL: 01258 268936  
MOB: 0787 0983 172

**BRAMALL GARDENS LTD**

**DESIGN—LANDSCAPING—MAINTENANCE**

EXPERIENCED IN ALL ASPECTS OF GARDENING  
FAST AND EFFICIENT  
ALL RUBBISH REMOVED




☎ : 01258 820394 MOBILE : 07971 793 872

**Jill Cook**  
Counsellor  
BACP Senior Accredited  
[www.jillcook.co.uk](http://www.jillcook.co.uk)

I offer support for issues including anxiety, depression, relationship difficulties & bereavement

For more information please contact me  
07944 669416  
Marnhull



Lavenders  
Green

Complementary Therapies  
Yoga, Reiki, Reflexology, Massage, Aromatherapy  
Human Givens Psychotherapy/Counselling &  
Radionic Treatment

**Tanya Green ITEC**  
Traditional Yoga Association  
T: 01258 820410  
M: 07729 301387  
E: [tanya@lavenders-green.com](mailto:tanya@lavenders-green.com)

Online Yoga classes available at  
[www.lavenders-green.com](http://www.lavenders-green.com)

**The Blackmore Vale Inn**  
MARNHULL . DORSET



Nestled in the heart of Dorset's beautiful Blackmore Vale Charlie, Sasha and family welcome you to:

**The Blackmore Vale Inn** - one of Dorset's best kept secrets.

A family run 450 year old traditional Dorset pub.

Serving delicious homecooked food, excellent wines and spirits and a great selection of beers.

See our website for opening times:  
[www.theblackmorevaleinn.co.uk](http://www.theblackmorevaleinn.co.uk)

*Regular Live Music - Quiz Nights - Drinks Offers*

**The Blackmore Vale Inn**  
Burton Street, Marnhull, Dorset. DT101JJ  
Tel: 01258 820701 Mob: 07488403380

# TECHNEWS



## YOUR MONTHLY TECH UPDATE

**CHRIS RYU**  
Dorset Tech

Welcome back to my new column where I give you a brief overview of what's changing in the world of technology and how it will affect you in Marnhull.

### NEW iPhone DEBUT

I know we have a lot of Apple fans in the village. Last week Apple unveiled the new iPhone 16. To be honest it's not exactly a huge leap forward in technology, but there are some additions. Studies have shown that the average time for people replacing their iPhones as increased in recent evolutions from 3 years to 5 years, so even with the minor improvements it could feel like a big upgrade for users.

The most noticeable change is the addition of a new camera button. I'm surprised it's taken to 2024 to get to this point, but it's a worthy addition. Other features are questionable - prime example is the "AI emoji" feature. I don't think anyone asked for it or needs it.

They've finally caved in and added an AI to the iPhone; better late than never! This will be rolled out as part of a trial in other territories from next month before hitting us. Siri (Apple's assistant) has lagged behind the competition, so this is long overdue. Other than that, it's the usual faster processor and better battery life. Isn't it weird that we're told every year that the phones are faster and have better battery life, but it always seems to be the same...

Roll on Samsung's event so I can tease them too.

### ARE YOUR PHONES LISTENING TO YOU?

I'm sure you've all experienced that weird phenomenon where you have a conversation and then later that day you see adverts for that exact thing. It's long been suspected, joked about and we probably all have anecdotal evidence of it.

I've had it myself recently. A product that I'm not remotely interested in and have never "googled" in my life started appearing in multiple adverts shortly after a random conversation about that thing.

Brands like Google, Meta (Facebook), Amazon and Apple have all denied this, but many suspect this not to be true. Recently a document from Cox Media to their investors, lists the above companies as customers and describes how they can collect this information. Naturally some of the big 4 have denied this too with Google rapidly removing Cox Media from their Partners page.

Both IOS and Android have some permissions that you can change to (in theory) stop this spying, but please note that this removes some fairly useful features, so there's a trade-off between privacy and functionality.

### A BAD PHONE THAT'S ACTUALLY AMAZING

Here's a really quirky device that I think would be great for the older generation in the village. It's called the Boox Palma and it's one of the only phones with an "e-paper" display.

I actually have one of Boox's bigger and older devices and people are often surprised by it. I take hand-written notes in meetings on what looks and feels like paper, but it's a fully functioning Android tablet - it even has a colour display. Most tablets have a battery that lasts a day, but this thing lasts 3-4 weeks on one charge! What's more, when I read a book on it, it's just like reading a real book with no eye strain. In fact it has a gentle backlight when needed and I find in low light, it's easier on my eyes than a real book. It somehow manages to understand my terrible hand-writing and so by the time I've got back to my desk, it's added my notes to our system for a team member to action.

Well now Boox have released a smaller device. The Boox Palma is a fresh take on a phone. Less distractions, less notifications and less having to charge your phone.

It is a "bad" phone. It's slow, has only 128GB of storage, the camera is rubbish, it's screen is black and white and it doesn't even have a sim card slot so calls can only be made when connected to wifi! Yet despite how "bad" it is, this device is getting a huge cult following. People are wanting to distance themselves from the constant barrage of modern devices and this "dumb" device is making them feel free.

Personally I don't think this device is the answer, but I do think that this is a step in an interesting direction. I look forward to their next device, hopefully with a sim card slot!

In the meantime, I would highly recommend the Boox devices instead of a Kindle. It runs the Kindle app alongside the Android app store.

FOR WEBSITE AND APP DEVELOPMENT CONTACT CHRIS  
Dorset Tech

[www.dorset.tech](http://www.dorset.tech)



Live #LikeABosch

Our line-up of freestanding appliances with added peace of mind.



For Service Beyond The Sale  
**Marsh's**  
Your Local Electrical Retailer

🏠 34 Market Place, Sturminster Newton, DT10 1AR ☎ Tel: 01258 472564  
🏠 59 Cheap Street, Sherborne, DT9 3AX ☎ Tel: 01935 389665  
🌐 [www.EB Marsh.com](http://www.EB Marsh.com)

T&Cs apply. Promotion dates: 01.04.22 - 31.03.23. Online registration required. Selected models only. Sold as an agent of Euronics Limited. All rights reserved. All offers are subject to availability while stocks last. Delivery & Installation charges may apply. Exclusions & radius applies. See in-store for full details. Images for illustration purposes only. Copyright Euronics 2022. EBOE June 2022.

Whether you live at No.18 or No.58,  
we will find a buyer for you



01258 473766

**Symonds & Sampson**

Property advice since 1858

### CROSSWORD AND SUDOKU ANSWERS

ACROSS 1. Peewit 4. Henge 6. Ley 7. Espresso 8. Maya  
11. Ivory 13. Fell 15. Lambada 16. Fellini 17. Very  
19. Aside 21. York 24. Seabirds 25. Ure 26. Crane  
27. Dundum  
Down 1. Pygmy 2. West Indies 3. Torso 4. Husky 5. Noodle  
6. Loom 9. Abbey 12. Referendum 13. Filly  
14. Lunar 18. Russia 19. Adage 20. Iliad 22. Oakum 23. Kale

4	5	3	1	7	9	6	2	8
1	2	7	6	4	8	9	3	5
9	6	8	3	2	5	4	7	1
8	4	9	5	6	2	3	1	7
3	7	2	4	8	1	5	9	6
6	1	5	7	9	3	8	4	2
5	9	1	2	3	6	1	7	8
7	8	6	9	1	4	2	5	3
2	3	4	5	6	3	4	7	2
4	7	8	5	2	9	6	3	1



At our meeting on the 10th September we welcomed Abigail Balingier who came to talk to us about 'The Magic of Somerset Gardens'.

Abigail introduced us to many famous, and also less well known, Somerset Gardens including Hestercombe, Greencombe, Iford Manor, the Bishops Palace Gardens and Kilver Court to name but a few.

She projected beautiful photos onto the Village Hall screen of these gardens which made us feel as if we were there in person and her knowledge and passion about the history and features of these gardens shone through.

Abigail has also written a book 'Secret Gardens of Somerset' in which many of these photos were featured together with lots of interesting facts about each garden.

On the 2nd September Marnhull Garden Club arranged a visit to Athelhampton House and gardens. This was very much enjoyed by all those taking part with lots to see and do.

Our next speaker will be Simon Goldsack on the subject of 'Holme Gardens - A New Public Garden'. We look forward to finding out more about this on the 8th October in Marnhull Village Hall at 7pm (talk starts at 7.30pm).

As always, non-members are welcome at a day rate of £3.00 but if you would like to join the Garden Club as a member you would be made to feel most welcome. Part year membership (until the end of 2024) will cost just £10.

As well as a programme of meetings with varied and interesting speakers, you would also benefit from discounts at local garden centres, organised trips and the odd social event.

With over 100 members this is a particularly good club to join if you are new to the village and want to get to know people. You don't need any gardening knowledge and we have a few garden experts who can share their experiences.

**And now some gardening tips for October.**

Plant up a container of late flowering perennials such as Japanese anemones, Michaelmas daisies, hebes, salvias, rudbeckia and nasturtiums.

These will provide a splash of Autumn colour as well as attracting pollinators with much needed nectar. These would include red admiral and small tortoiseshell butterflies, ivy bees and hoverflies.

Make a lasagne bulb pot. Plant a pot of bulbs in layers for a succession of flowers next Spring.

Put tulips at the bottom, narcissus in the middle and dwarf iris at the top. Then look forward to a succession of Spring colour next year.

This is the month to make repairs to your lawn before the grass freezes or gets too wet. Clear fallen leaves regularly, shredding them by mowing and pick them up for the compost bin or to make leaf mould.

Sow new seed to fill any gaps scratching the surface with a rake first. Protect from birds with netting.



**Fundraising Tea in Support of Medical Aid for Palestinians**

A few people who are concerned about the ongoing humanitarian crisis in Palestine recently held a fund-raising tea at Aisling House, hosted by Sheila Healy and Richard Harvey, in aid of Medical Aid for Palestinians.

This is a long-established organisation which provides healthcare services to Palestinians in Gaza, the West Bank, and the refugee camps in Lebanon.

The afternoon was afflicted by appalling weather but several brave souls came to share hot drinks and cakes and kindly donated a total of £150 which has been sent to MAP.

It is intended to hold further events in Marnhull for this cause, with an early evening event at the Village Hall on February 6th being the next date for your diaries – watch this space!!

Further info – Anne Dowsett 01258 821534

**Marnhull**



**Newcomers Social Evening**

If you have moved into Marnhull since October 2023 you are invited to a social event on

**Friday 18<sup>th</sup> October 2024**

**7pm-8.30pm**

**at Marnhull Village Hall**

Enjoy a glass of Prosecco and meet other villagers and representatives from local clubs & societies, parish councillors, members of the clergy and teachers from local schools

**ACTION: Contact Lesley Ruth**

**by 28th September to confirm your acceptance**

**on 01258 821306 or by email [lesleyruth4@aol.com](mailto:lesleyruth4@aol.com)**



**HOOK**  
**ELECTRICAL CONTRACTORS**  
 Domestic Commercial Ecclesiastical  
*All Aspects of Design, Installation, Inspections & Repair works*

Contact Ed Cudlip on 01258 820161 or 07956281644  
 Email: [hookelectrical@gmail.com](mailto:hookelectrical@gmail.com)








**CHAFFERS** ESTATE AGENTS *Incorporating* **ROY BARRETT** ESTATE AGENTS  
 Experts in local knowledge

**SALES, LETTINGS, COMMERCIAL, SURVEYS**  
**More Properties Urgently Required!**

Gillingham \* Shaftesbury \* Sturminster Newton \* Wincanton  
**Tel: 01258 473900**

  
**BELLE CARE**



**EXCEPTIONAL LIVE-IN CARE**

We are a local care agency, based in North Dorset, specialising in providing support for those who need help in order to continue to live in their own homes. We provide affordable, tailor-made respite or permanent care, which fully takes into account your needs and wishes. If you'd like to know more about how we can help you or a family member, without any obligation, please call Arabella.

07733 196677 - 01747 702142  
[info@bellecare.co.uk](mailto:info@bellecare.co.uk)

[www.Back2Market.com](http://www.Back2Market.com)

**REMOVALS - PACKING - STORAGE - CLEARANCE**



**Checkatrade.com**

**Contact us for your free, no obligation quote**  
 Phone: 01963 400352  
 Freephone: 0800 2425012  
 Mobile: 07853 275379  
 Email: [enquiries@back2market.com](mailto:enquiries@back2market.com)  
 Website: [www.back2market.com](http://www.back2market.com)

  
**Camelot BUILDERS**

*All aspects of building work undertaken including:*

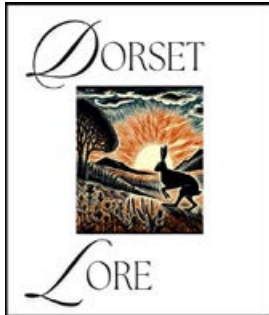
- **Extensions**
- **New Builds**
- **Roofing**
- **Renovations**
- **Loft Conversions**

Camelot Builders Ltd  
 Farm Office  
 East Lawn Farm  
 Lawn Crossroads  
 Gillingham  
 Dorset SP8 5QN  
[www.camelotbuilders.co.uk](http://www.camelotbuilders.co.uk)

**Tel: 01747 835422**  
**email: [info@camelotbuilders.co.uk](mailto:info@camelotbuilders.co.uk)**



# DORSET LORE



## GHOSTS GALORE!

**CHRIS WALTON**  
Oak Digital Solutions

Welcome to Dorset Lore, a monthly column featuring the rich heritage of folklore, tradition, ghost stories and legends of the county of Dorset.

As the nights draw in and Halloween approaches it is at last time to sit by the fire and talk of ghosts!

Marnhull has a good selection of spectres and we will begin with the best known.

"At Marnhull a funeral was supposed to be seen at midnight (on a certain date) crossing Sackmore Lane from Fillymead to Dunford's.

There were no mourners following and the faces of the bearers were hidden beneath the pall which covered the coffin. According to local belief, it went along the line of the fighting.

(N.B.-This refers to the supposed battle-fields near Todber, near to the quarry where so many human remains were found in 1870)

The same funeral story is told of Grove Field near Nash Court, which is practically in a line from Fillymead to Todber. A local explanation of the name Todber is 'Trode bare,' i.e., by the troops at the time of the fighting."

This information taken from Dorset up along and down along is the oldest and most complete account that I can find of the Marnhull Funeral.

I would love to know more about this ghost story – What is the "certain date?" Who witnessed the procession? Has it been seen since this was written in 1935?

The following are also detailed in the same book:

"The cottage forming part of a right angle in Burton Street near Michael's Square, was haunted by the spirit of Michael Harding – a shoemaker who once occupied it.

Noises of rapid hammering were nightly heard until someone said: "What have 'e lost to-night, Michael, yer hammer?" Then the noises would fade away.

At Ashley Farm (the site of Knightstreet) where the house now stands there were formerly some cottages.

In one of these a man used to appear standing in front of the fireplace in breeches, gaiters, a long tail coat with brass buttons.

When the cottages were pulled down, under the hearthstone of this fireplace a lot of money was found."

I have also heard of the ghost of a shepherd in traditional smock being sighted by a taxi driver on the corner of Church Lane, Todber and the B3092, somewhere between ten and twenty years ago.

I can find no other reports of this figure being sighted.

I have already gathered lots of folklore specific to Marnhull and surrounding villages and would be very interested to hear what stories locals recall, what their sources are, and what variations there are of the stories I have already researched.

You can now follow and message Dorset Lore on Facebook (just search for Dorset Lore) and you can e-mail me at dorsetlore@gmail.com

FOR ALL YOUR LOCAL LORE  
Dorset Lore - On Facebook  
Email: [dorsetlore@gmail.com](mailto:dorsetlore@gmail.com)



**St Gregory's Church**  
Marnhull

## 2024 AUTUMN CONCERTS

(Alternate Sunday afternoons at 3pm)

- 25<sup>th</sup> August - Anthony Burns-Cox (organ)
- 8<sup>th</sup> September - Neil Sissons (organ)
- 22<sup>nd</sup> September - Clapper Chaos (hand bells)
- 6<sup>th</sup> October - Louise Cousins (piano) and special guests
- 20<sup>th</sup> October - Stephen Binnington (organ)
- 3<sup>rd</sup> November - Ian Jordinson's organ compositions (played by Stephen Binnington)

No tickets required but donations towards Church Funds will be gratefully received



# ROYAL BRITISH LEGION MARNHULL BRANCH AND CLUB

LEGION HALL, SODOM LANE, MARNHULL  
TELEPHONE: 01258 820613  
Clubhouse open hours  
Tues-Thur 8-11:30pm, Fri 4.30-11pm, Sat 12-3pm, 7-11.30pm

SKITTLES (LEAGUE and FRIENDLY) -  
DARTS POOL  
**LIVE ENTERTAINMENT**  
BRANCH AND CLUB MEMBERSHIP  
NOW AVAILABLE  
**FAMILIES MOST WELCOME**  
Come along and see what we can offer you

Website: [www.marnhullrbl.co.uk](http://www.marnhullrbl.co.uk)  
Email: [whiteheadjack51@gmail.com](mailto:whiteheadjack51@gmail.com)

**Alternate Mondays**  
(from March 6th to Dec 11th)  
**PRIZE BINGO**  
Starts at 7pm - 10pm  
Open to everyone

 Royal British Legion Marnhull



**AGRICULTURAL CONTRACTORS**  
COMPLETE AGRICULTURAL CONTRACTING SERVICE

**CIVIL ENGINEERS: HEAVY AND RURAL**  
OPERATED PLANT HIRE, HAULAGE, LANDSCAPING, FENCING,  
LAND DRAINAGE, HEDGE TRIMMING,  
LAKE AND POND CONSTRUCTION

**TRACK REGENERATION**  
POTHoles TAKEN OUT IN ONE PASS.  
QUARTER THE PRICE OF RESTONING THE SURFACE. CEMENT  
CAN BE INCORPORATED

BEFORE



AFTER



SUPPLIERS OF OOLITIC LIMESTONE, TURF, TOPSOIL,  
SAND, GRAVEL, SCALPINGS AND MORE

**01258 472419**  
Web: [www.bartlettcontractors.co.uk](http://www.bartlettcontractors.co.uk)

*For more information please visit:*  
[www.marnhullstone.co.uk](http://www.marnhullstone.co.uk)



**SUPPLIERS OF NATURAL AND CUT STONE:**

RANDOM DRESSED  
SAWN SPLIT  
CHISEL FACED ASHLAR  
WINDOW SURROUNDS  
DECORATIVE WALLS





FIREPLACES

ASHLAR

FLOORING

Dean Harris (Quarry Manager): 07771 684647  
Office: 01258 472419  
Whiteway Quarry, Whiteway Lane, Marnhull,  
Dorset, DT10 1NQ

**MARNHULL TENNIS CLUB**



It's been a very eventful close to the summer season, with plentiful junior activities, the club's summer tournament finals day, and much more – and we're looking forward to continuing things into the winter!

After nearly 4 years planning for the tennis court floodlights, work began in September.

All ground excavation has been completed and we await the arrival of the lights themselves, currently planned for 1 October, road closures permitting.

A huge number of people have been involved in getting this project to this point through planning, winning community support, funding and delivery, but until the lights are up and running, we will hold back on thanking them!

Hopefully by next month we can celebrate a successful project and an excellent addition to the many community benefits offered by Marnhull to its residents and those of neighbouring villages.

Thanks to the addition of the new floodlights, the club will be taking part in the Dorset Winter League as well as keeping events going through the darker season.

If you want to learn more about what's going on, head over to [clubspark.lta.org.uk/MarnhullTennisClub](http://clubspark.lta.org.uk/MarnhullTennisClub).

**MARNHULL WOMEN'S INSTITUTE**

Gradual changes in our social structure over the last few centuries have led to a situation in which death is no longer recognised as part of the human experience. In the past close communities surrounded and supported the dying person and their families. Now death often occurs in an institutional setting such as a hospital or a hospice.

Nicky Donaldson explained that the role of End of Life Doula fills the gaps left in this more clinical arrangement by acting as a pivot point between the dying and their close associates with the rest of the clinical and bureaucratic world. He or she can offer emotional, practical and even financial assistance at a time of maximum distress and help families to navigate the tricky waters of officialdom.

There are so many emotive issues that people are afraid to address: where would the person prefer the last days to be? At home? In a hospice? Who should be involved in these decisions? Who should be involved in funeral arrangements?

These questions are so hard to face but the Doula can help folk to address them.

For much more on this role in society, refer to [eol-doula.uk](http://eol-doula.uk)

**MARNHULL ENTERTAINS BARN DANCE**

Teasing the Cat  
&  
Ploughman's Supper  
Friday 25th October  
7.00 for 7.30

£12.00 per person  
MARNHULL VILLAGE HALL

**MARNHULL ENTERTAINS**

For this event only contact:  
[dowsettjohn48@gmail.com](mailto:dowsettjohn48@gmail.com)  
01258821534

**ROYAL BRITISH LEGION JUMBLE SALE!**

Marnhull Royal British Legion DT10 1HR on Saturday 11th January. Doors open at 10.15.

**MARNHULL MEN'S SHED**

The Marnhull Men's Shed meets weekly at our workshop, where members can work on their own projects or work together on Community projects. There is also the opportunity to learn new skills or pass on skills to others. For those not project minded there is always the chance for a natter over tea and biscuits with friends old and new.

FOR MORE INFORMATION:  
Please contact Alan Loukes  
[Alan@loukes.co.uk](mailto:Alan@loukes.co.uk) or 07767 817173



## ROBIN HILL STORES

POST OFFICE & CONVENIENCE STORE



- Beautiful Fresh Fruit & Veg
- Locally sourced hand carved ham & cheeses
- Fresh snacks & sandwiches
- Locally baked speciality breads & cakes
- Newspapers & Magazines
- Cards, Stationery
- Wines, Beers & Spirits
- A big range of household essentials

Full Post Office service including cheques & cash, car tax, electricity, gas & mobile top up. National Lottery, Foreign currency & Dry Cleaning



FREE home delivery available

01258 820959 | [robinhillstores@gmail.com](mailto:robinhillstores@gmail.com) | [www.robinhillstores.co.uk](http://www.robinhillstores.co.uk)  
 Mon – Saturday 7.30 til 8 Sunday 7.30 til 12

 Love your Local Shop,  
**THINK BIG, SHOP SMALL**

# TONY WILLIAMS

## ACCIDENT REPAIRS



### MIRACLE PULL - DENT REPAIRS

APPROVED BY:
















LOCATED BETWEEN MARNHULL & STALBRIDGE

## 01963 365733

OFFERING THE HIGHEST QUALITY REPAIRS USING THE BEST QUALITY MATERIALS & EQUIPMENT






# CLUBS & CLASSES



## Marnhull & Gillingham BADMINTON Club

### BADMINTON FOR BEGINNERS

**Monday Club Social Night:** 8-10pm (except bank holidays)  
 Joining Fee £25  
 Adults £4.50  
 Family (up to 2 adults & 2 children) £7.00  
 Juniors £3.00

**All Coaching FREE** (Badminton England Coach)  
 Loads of fun for children and families

**Badminton Club Night** Tuesday club night: 7.00-10.00pm  
 First night free to new members

**All Coaching FREE** (Badminton England Coach)  
 Intermediate level players always welcome

**Badminton Senior Night**  
 Thursday senior league night: 8.15-10.15pm  
 The club is interested in players who wish to play at a league level.

The club participates in the Salisbury district league - div2 mens and div2 mixed and div3 mixed

**CONTACT:**  
 Robert Tulk - 01258 820728  
 Meet at Riversmeet on Mondays, Tuesdays & Thursdays

### MARNHULL COMMUNITY CHOIR

A non audition group that meets on a Wednesday evening from 7pm-9pm in Marnhull Village Hall. We follow school term dates with a 10-week term. Membership is open to men and women over the age of 18. Our music genre is broad and includes musical theatre, light classics and seasonal favourites with the emphasis being on fun and enjoying singing together.

Contact Chris Drake 01258 820645 or email [chris@christine-drake.com](mailto:chris@christine-drake.com)

[www.marnhullcommunitychoir.com](http://www.marnhullcommunitychoir.com)

### MARNHULL LUNCH CLUB

Meets on the 1st Friday of every month in the Village Hall, except January. The club opens at 12 noon and lunch is served at 1pm. Transport can be provided to and from the Village Hall if needed.

Main Course, Dessert and Tea or Coffee £10.00  
 For more information please call  
 Liz 01258 821378 or Dawn 01258 820642

### MARNHULL GARDEN CLUB

The Garden Club meets at 7.30pm on the 2nd Tuesday of most months, in the Marnhull Village Hall.

Come and join us for refreshments and a chat.

We usually have a guest speaker and learn some new gardening tips.

Contact Secretary Phil Silvester 01258 394288 / 07921 214591 [marnhullgardenclub@gmail.com](mailto:marnhullgardenclub@gmail.com)

### MARNHULL MUSIC SOCIETY

Meets every 3rd Monday of the month (except July and August) at 7:15pm in the village hall. We listen to a varied programme of music (mainly but not exclusively classical) presented by one of our members and enjoy a social 'cuppa' during an interval.

FOR MORE INFORMATION:  
 Please contact Alan Loukes on 01258 821629

### MARNHULL AMBLERS & RAMBLERS

**Short walk (amble) approx 3 miles**  
 on 2nd Thursday morning of the month  
 Contact Anne Dowsett - [dowsetanne52@gmail.com](mailto:dowsetanne52@gmail.com)

**Longer walk (ramble) 5-7 miles**  
 on last Thursday of the month  
 Contact Elaine Spencer-White - [elainesw48@gmail.com](mailto:elainesw48@gmail.com)

### MARNHULL CRAFT CLUB

Meets at 10:00am on the first Thursday of every month (except August) in

THE METHODIST CHURCH HALL

Relax, meet new and old friends for coffee and chat. Use your skills and learn something new, in a friendly and relaxed atmosphere.

More information from Sue Piper - 07787299227

### MARNHULL BRIDGE CLUB

Marnhull Bridge Club meets in the Methodist Hall every Tuesday at 2pm to play Chicago.

New Players always welcome.  
 Call 01258 820036 for information

### FRENCH & SPANISH CONVERSATION

Want to get those little grey cells working? Then come along to French or Spanish conversation! This can complement your work with Duolingo or refresh your memories of your O level days.

For more information contact Ros Eveleigh on 821049.

### MARNHULL WOMEN'S INSTITUTE

Meets on the 2nd Monday in the month (except Aug) At 7.30pm in the Village Hall

We look forward to seeing new and old members  
 President: Nicola Denham - 01258 821343

### BLACKMORE VALE ART GROUP

The group meets monthly on the second Friday at 10:30am in the Village Hall.

All styles and levels of experience are welcomed.

FOR FURTHER INFORMATION CONTACT  
 Yvonne 820247 or [mikyon@aol.com](mailto:mikyon@aol.com)



## Charleston Civils & Build



CHARLESTON CIVILS & BUILD

Groundworks  
 Civil Engineering  
 Drainage  
 Treatment Plants  
 New Build Homes  
 Extensions

CHARLESTON CIVILS & BUILD

All Aspects of Concreting Works

01963 361120

[www.charlestoncivilsandbuild.co.uk](http://www.charlestoncivilsandbuild.co.uk)



## CALCOTT CONSTRUCTION LIMITED

From Design to Reality



Products range from conservatories, extensions, loft conversions, alterations, new properties, natural stone etc. Based in Sturminster Newton, between Shaftesbury and Blandford, we cover Dorset, Wiltshire, Somerset, Hampshire and beyond.

Calcott Construction is a building contractor who has been established since 1984 and handles all types of home improvements from conservatories to new dwellings. We provide a personal hands on service on all projects large and small. We always have a regular team of friendly and experienced tradespeople to complete all projects to the highest standard.

We are able to assist you in the design process right through to the reality of a completed project with the aid of an architect.

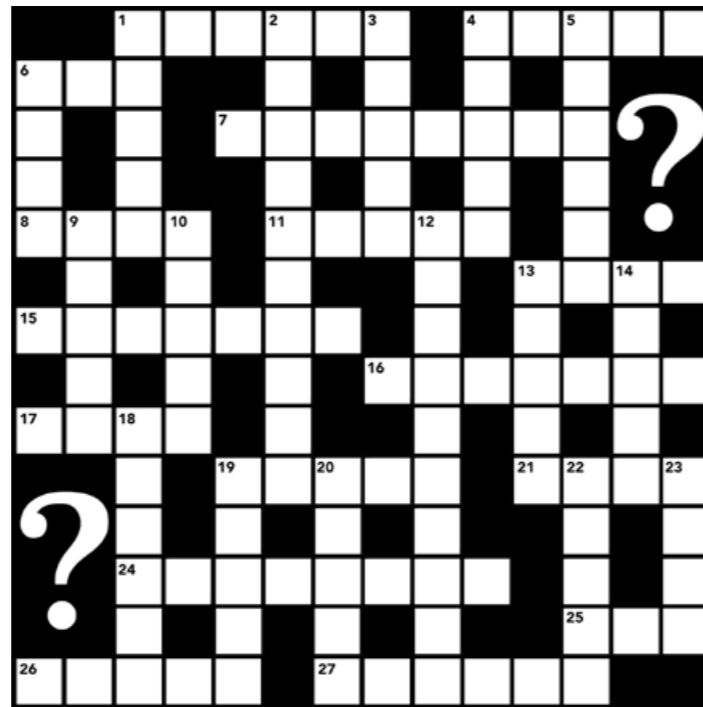
Conservatories Extensions Loft Conversions Alterations New Properties Natural Stone Dry Stone Walling

T: 01258 475 046  
[www.calcottconstruction.co.uk](http://www.calcottconstruction.co.uk)



ACROSS

- 1) Another name for a lapwing because of its call. (6)
- 4) Prehistoric circle of stone or wooden uprights. (5)
- 6) Supposed straight line connecting three or more ancient sites. (3)
- 7) Strong black coffee made by forcing steam through ground coffee beans. (8)
- 8) A member of a group of Indian people of Central America. (4)
- 11) Material that composes most of an elephants tusk. (5)
- 13) Stretch of moorland in northern England. (4)
- 15) Fast erotic Brazilian dance. (7)
- 16) Federico, late Italian film director. (7)
- 17) Light made from a flare fired into the air for signalling. (4)
- 19) An actor's remark heard by the audience but not meant to be heard by the other actors. (5)
- 21) Royal house whose dynasty ended with the death of Richard 111. (4)
- 24) Gulls, terns and puffins for instance. (8)
- 25) River in North Yorkshire that flows down Wensleydale. (3)
- 26) Tall long legged, long necked bird. (5)
- 27) Soft nosed bullet that expands on contact. (6)



DOWN

- 1) Member of a certain number of peoples of short stature in Central Africa. (5)
- 2) Crescent shaped group of islands in the Caribbean Sea. (4-6)
- 3) The trunk of the human body. (5)
- 4) Powerful dog with a thick double coat. (5)
- 5) A very long thin strip of pasta. (5)
- 6) Apparatus used for making fabric by weaving yarn or thread. (4)
- 9) Ornamental stone typically banded in appearance. (5)
- 10) Establishment occupied by a community of monks or nuns. (5)
- 12) General vote by the electorate on one political issue. (10)
- 13) Female horse less than four years old. (5)
- 14) Relating to the moon. (5)
- 18) The largest country in the world by area. (6)
- 19) Proverb that expresses a general truth. (5)
- 20) Homer's poem about the siege of Troy. (5)
- 22) Rope fibre used for caulking wooden ships. (5)
- 23) Hardy cabbage with large leaves. (4)

				9
		1		3
	2		7	4
6			3	
3		8		
		5		1
	8	2		1
	7	6		
5			9	2
				8

4	7		2		1
			3		
		1	8		5
	6		8		9
		4		7	
			6	1	4
6	9	3	2		8
8					3
					5

ALL PUZZLE ANSWERS ON PAGE 24

**New Messenger Deadline:  
Mid-Day 14th October**

Email all texts, announcements  
and other requests to:  
[editor@marnhullmessenger.org.uk](mailto:editor@marnhullmessenger.org.uk)



- ◆ Buying and Selling Your Home
- ◆ Commercial Property
- ◆ Wills
- ◆ Agricultural and Rural Business
- ◆ Powers of Attorney
- ◆ Employment
- ◆ Probate and Estates
- ◆ Property and Land Disputes
- ◆ Equity Release
- ◆ Court of Protection



Shaftesbury: 01747 440448  
Sherborne: 01935 817736  
Gillingham: 01747 822103

[www.maclachlansolicitors.co.uk](http://www.maclachlansolicitors.co.uk)

**PITMANS**



- Removals & Containerised Storage
- Partloads / Small Moves (Starting at £300+VAT)
- Shipping - Worldwide
- Local & Nationwide

**01258 858564**

[www.pitmansremovals.co.uk](http://www.pitmansremovals.co.uk)

*We are proud to announce our new premier partnerships, bringing forward better prices for our clients.*

SH  P  
LOCAL



Premium appliances designed with innovations for your home for a better today and sustainable tomorrow.



Treat your kitchen to the latest technology. Browse must-have integrated and freestanding appliances and love-to-have



The Tap That Does It All — 100°C boiling, filtered chilled and sparkling water. Energy efficient, safe and sustainable.

*Helping you with your decision for quality appliances within your new kitchen or when the time comes to make replacements.....*



*Bespoke style with a price to make you smile.*

**Why is it important to engage a professional to design the most important room in your home?**

*Home is where the heart is. And the kitchen is the heart of the home.*

*Your kitchen is a hive of activity where the day starts and ends, where the whole family bonds and where your children first start to learn. It is the place to cook, entertain, relax, and above all – enjoy. That is why you need a professional designer to understand your needs and build them into your dream kitchen.*

**At Harts, we provide an unique service that is not available on the high street, with fully comprehensive options and most importantly, we provide the best choices within your budget.**