

THE MARNHULL MESSENGER

JULY/AUGUST 2024 | ISSUE 145

www.marnhullmessenger.org.uk

THE MARNHULL FLOWER SHOW!

| Page 13

NEIGHBOURHOOD DEVELOPMENT PLAN

| Page 22

THE MARNHULL FEST IS NEAR!

| Page 20



Our Schools

See what the schools are up to

| Page 20



In Our Churches

All the latest news from the churches

| Page 19



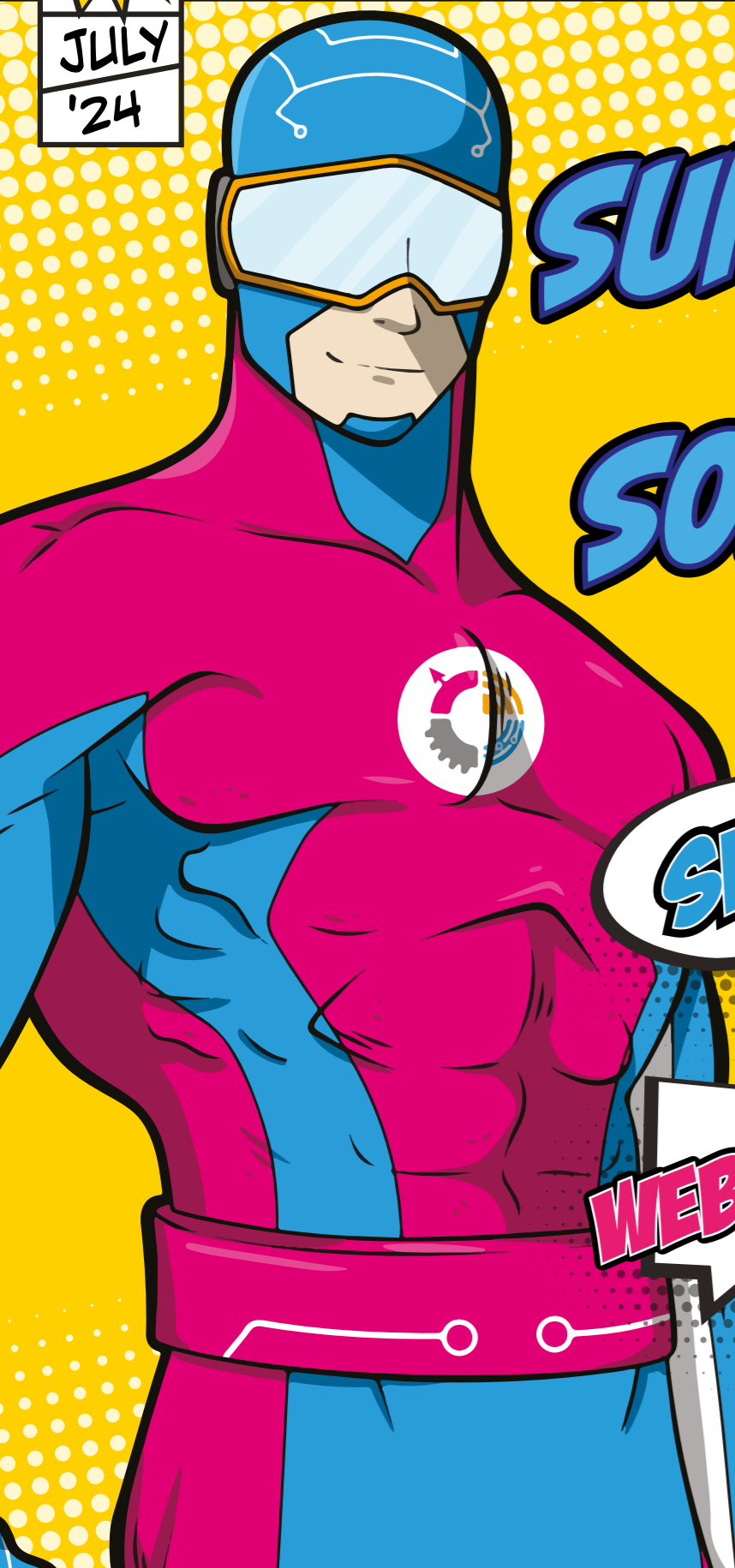
The Surgeries

What's new from our local doctors surgeries

| Page 5



#9
JULY
'24



SUPERHERO WEB SOLUTIONS

MARKETING

SEO

SOCIAL MEDIA

WEBSITES

APPS

WWW.DORSET.TECH

DISCOUNTED RATE FOR MARNHULL RESIDENTS

WELCOME TO YOUR
MARNHULL MESSENGER



CHRIS RYU
Messenger Editor

DEADLINE FOR NEXT ISSUE

MID-DAY 14th August

E-mail all texts, announcements and other requests to:
editor@marnhullmessenger.org.uk

Welcome back to the new look Messenger!

Summer's here! We took the British weather with us to Japan - it rained every day I was there. Fortunately we seemed to have brought the Japanese heat back with us!

We had a great time studying various martial arts while we were there. Our favourites were Kendo and Ninjutsu, but they were all very enjoyable.

July is by far my favourite time in the village. The Marnhull Fest and Marnhull Flower Show teams have been busy organising the biggest shows of the year. Please show your support.

Reminder that there's no issue next month.

REMINDER: NEW POLICY FOR EVENT ADVERTS

You can still have a free listing in the diary and a free text based article, but coming later this year, if you would like an image based advert placed in the Messenger you will need to pre-pay for the space on our website. There is an exception for organisations in the village. We believe this change will either free up valuable space for articles, or will help cover our print costs.

SUBMIT YOUR EVENTS INTO A LIVE CALENDAR

On the messenger website and they'll be added to the printed automatically:
www.marnhullmessenger.org.uk

VILLAGE HELP

NORCAT - Bookings 10am - 3pm - 01258 472164
Dial-a-Ride - Major & Immediate Emergencies Only - 07900 261182
Marnhull Village Care Car Service:
 Marnhull Village Care offer a door-to-door car service for people in the parish who cannot arrange their own transport for essential trips; medical appointments, for example. Passengers pay their volunteer drivers according to a mileage scale in line with HMRC regulations. Call 07777 559076 for all enquiries.

DISCLAIMER

The opinions expressed in the articles and on the pages of the Marnhull Messenger are not necessarily those of the Marnhull Messenger. All the dates and details are as supplied by the contributing organisations.. The Marnhull Messenger is not responsible for errors or omissions, accuracy of the content, nor the failure of any published event to go ahead. The letters and articles published in this magazine are accepted in good faith and the views expressed therein are not necessarily the views of the Messenger Steering Committee, whose decisions on publication are delegated to the Editor and are final.

This publication is provided for your use "as is" without warranty of any kind, either expressed or implied; inclusion of an advertisement for an event or service does not imply that they are endorsed by the Marnhull Messenger. The Marnhull Messenger will take all reasonable precautions to ensure that the content is socially and morally acceptable.

PRIVACY POLICY

The Marnhull Messenger respects the privacy of organisations and persons who submit information for publication. Personal details, including photographs, will only be published if approved and submitted by organisations or individuals. No personal details will be given out or sold to any third parties, whether individuals, organisations or companies.

CONTACT DETAILS

These contact details are to be used in relation to the publication of the Marnhull Messenger ONLY

- EDITOR & WEBMASTER:** Chris Ryu
editor@marnhullmessenger.org.uk
- ADVERTISING:** Rosie Gall
rosiegall1@gmail.com
- TREASURER:** Kim Harden
treasurer@marnhullmessenger.org.uk
- CIRCULATION:** Catherine & Mark Turner
circulation@marnhullmessenger.org.uk
- CHAIRMAN:** Ian Gall
chairman@marnhullmessenger.org.uk
01258 820484
- ADMINISTRATOR:** Fiona Nelson
administrator@marnhullmessenger.org.uk
01258 821036

MARNHULL MESSENGER WEBSITE

Who Do I Contact?

Any amendments or proposals for new pages in the messenger website should be made to:
Chris Ryu Email: editor@marnhullmessenger.org.uk

MARNHULL MESSENGER DELIVERIES

It takes about 40 people, all of whom are volunteers, to collate and deliver The Marnhull Messenger to every home and business in the village. We are extremely grateful to this dedicated team, without whom the magazine simply would not flourish.

Whilst we always aim to deliver the magazine by the 1st of the month, from time to time illness, family commitments and a myriad of other personal issues can sometimes get in the way, resulting in the occasional late delivery. Recently, there have been a few complaints from villagers, because they felt their copy of The Marnhull Messenger was delivered late.

It might be worth pointing out that if it is essential to you to receive the Marnhull Messenger by a particular date and it hasn't arrived, then the Church, the two pubs and all the businesses in the village have spare copies available.

Ian Gall – Chairman, The Marnhull Messenger Steering Group.

ANNUAL DIARY 2024 *All events are held at the Village Hall unless otherwise stated.*

July

<p>1st - Monday Pound Fitness @ 09:30 British Legion Table Tennis - Monday @ 14:00</p> <p>2nd - Tuesday Bridge Club @ 14:00 Methodist Hall Marnhull Neighbourhood Plan Consultation @ 18:30</p> <p>3rd - Wednesday Fitsteps dance and exercise class @ 11:15 Table Tennis - Wednesday @ 14:00 Community Choir @ 18:30 Pound Fitness @ 19:00 British Legion</p> <p>4th - Thursday Craft Club @ 10:00 Methodist Hall</p> <p>5th - Friday Lunch Club @ 12:00</p> <p>6th - Saturday The Marnhull Hub and Repair Café @ 10:00 Marnhull Flower Show @ 12:00 Recreation Ground Stage One @ 20:30 British Legion Club</p> <p>7th - Sunday Tina Turner - One Last Time Live In Concert @ 19:30</p> <p>8th - Monday Pound Fitness @ 09:30 British Legion Table Tennis - Monday @ 14:00 Lyn's Bingo @ 19:00 British Legion Club Women's Institute - The Royal Visit That Went Wrong @ 19:30</p> <p>9th - Tuesday Bridge Club @ 14:00 Methodist Hall Marnhull Garden Club - Castle Gardens Seasonal Colour in the Garden @ 19:30</p> <p>10th - Wednesday Fitsteps dance and exercise class @ 11:15 Table Tennis - Wednesday @ 14:00 Tea with Friends @ 14:30 Methodist Hall Community Choir @ 18:30 Pound Fitness @ 19:00 British Legion</p> <p>12th - Friday Being here for each other @ 10:00 Methodist Hall Blackmore Vale Art Group @ 10:00</p> <p>13th - Saturday The Marnhull Hub and Repair Café @ 10:00</p> <p>15th - Monday Pound Fitness @ 09:30 British Legion Table Tennis - Monday @ 14:00 Marnhull Music Society @ 19:15</p> <p>16th - Tuesday Bridge Club @ 14:00 Methodist Hall</p> <p>17th - Wednesday Fitsteps dance and exercise class @ 11:15 Table Tennis - Wednesday @ 14:00 Community Choir @ 18:30</p>	<p>Pound Fitness @ 19:00 British Legion</p> <p>19th - Friday Marnhull Community Cafe @ 10:00</p> <p>20th - Saturday The Marnhull Hub and Repair Café @ 10:00 Beagles @ 20:00 British Legion Club</p> <p>22nd - Monday Pound Fitness @ 09:30 British Legion Table Tennis - Monday @ 14:00 Lyn's Bingo @ 19:00 British Legion Club</p> <p>23rd - Tuesday Moviola - Bob Marley One Love @ 07:30 Bridge Club @ 14:00 Methodist Hall</p> <p>24th - Wednesday Fitsteps dance and exercise class @ 11:15 Table Tennis - Wednesday @ 14:00 Community Choir @ 18:30 Pound Fitness @ 19:00 British Legion</p> <p>26th - Friday Figure Drawing @ 10:30</p> <p>27th - Saturday The Marnhull Hub and Repair Café @ 10:00 Sensational 70's - Ant and Dave @ 20:00 British Legion Club</p> <p>29th - Monday Pound Fitness @ 09:30 British Legion Table Tennis - Monday @ 14:00</p> <p>30th - Tuesday Bridge Club @ 14:00 Methodist Hall</p> <p>31st - Wednesday Fitsteps dance and exercise class @ 11:15 Table Tennis - Wednesday @ 14:00 Community Choir @ 18:30 Pound Fitness @ 19:00 British Legion</p>	<p>The Marnhull Hub and Repair Café @ 10:00 Cat and Mouse @ 20:00 British Legion</p> <p>5th - Monday Pound Fitness @ 09:30 British Legion Table Tennis - Monday @ 14:00 Lyn's Bingo @ 19:00 British Legion</p> <p>6th - Tuesday Bridge Club @ 14:00 Methodist Hall</p> <p>7th - Wednesday Fitsteps dance and exercise class @ 11:15 Table Tennis - Wednesday @ 14:00 Community Choir @ 18:30 Pound Fitness @ 19:00 British Legion</p> <p>9th - Friday Being here for each other @ 10:00 Methodist Hall Blackmore Vale Art Group @ 10:00</p> <p>10th - Saturday The Marnhull Hub and Repair Café @ 10:00 The Rebbels - Charity Night @ 20:30 British Legion Club</p> <p>12th - Monday Pound Fitness @ 09:30 British Legion Table Tennis - Monday @ 14:00</p> <p>13th - Tuesday Bridge Club @ 14:00 Methodist Hall</p> <p>14th - Wednesday Fitsteps dance and exercise class @ 11:15 Table Tennis - Wednesday @ 14:00 Tea with Friends @ 14:30 Methodist Hall Community Choir @ 18:30 Pound Fitness @ 19:00 British Legion</p> <p>16th - Friday Marnhull Community Cafe @ 10:00</p> <p>17th - Saturday The Marnhull Hub and Repair Café @ 10:00 The Originals @ 20:00 British Legion</p> <p>19th - Monday Pound Fitness @ 09:30 British Legion</p>
--	--	--

August

1st - Thursday Craft Club @ 10:00 Methodist Hall
2nd - Friday Lunch Club @ 12:00
3rd - Saturday

FOR VILLAGE HALL BOOKINGS
www.marnhullvillagehall.org.uk
 and click on 'Book the Village Hall'
 For general enquiries, email:
bookings@marnhullvillagehall.org.uk
 (9 to 5 weekdays)

**SUBMIT YOUR EVENTS INTO
A LIVE CALENDAR**

On the messenger website and they'll be added to this diary in the next issue!
www.marnhullmessenger.org.uk



FROM THE SURGERIES

PPG Meeting, Shaftesbury

At the recent meeting of the Patient Participation Group in Shaftesbury, Sara Froud, Managing Partner provided an update on the Practice, which currently has 26772 registered patients.

She shared some data about activity between November 2023 and April 2024.

In that period –

45959 Calls answered, an average of 369 a day with an average wait time of 4m 9s.

42508 Klinik requests

26953 Face to Face appointments

12574 Telephone appointments

710 Did not attend appointments

10330 Prescriptions issued

52200 Test results reviewed

There were questions about the ratio of patients to Doctors. Not all Doctors hold a list of patients, some have smaller lists of 140 per session worked, but the GP Partners hold the lion's share of patients on their list, which can be as many as 650 per session worked.

The answer to the question "Do you feel you have enough clinicians?" was "We could always have more!"

Another question was about how to stop medications that you no longer need, which are part of a batch prescription. The answer is, if a patient chooses to stop then it would be great if they tell the Practice and the Pharmacy and hand back any unwanted medicines at the Pharmacy before they leave the premises, so that they can be put back on the shelf. If patients have a lot left over, please contact the Practice who can advise what to do with them.

Dr Simone Yule then spoke about Pharmacy First. This initiative means that Pharmacists can give you advice on a range of conditions and suggest medicines you can buy that can help.

They may also be able to offer treatment for some conditions, without you needing to contact the Practice:

- earache
- impetigo
- infected insect bites
- shingles
- sinusitis
- sore throat
- urinary tract infections (UTIs)

If you go to a pharmacy with one of these conditions, the pharmacist will offer you advice, treatment or refer you to a GP or other healthcare professional.

They will then update your GP health record.

Dr Yule then explained the importance of individuals taking care of themselves and being more aware of their own health. There is a sliding scale of self-care, starting with the individual responsibility people take in making daily choices about their lifestyle, such as brushing their teeth, eating healthily or choosing to do exercise.

Moving along the scale, people can often take care of themselves when they have common conditions such as sore throats, coughs etc, for example by using over-the-counter medicines.

The same is true for long term conditions where people often self-manage without intervention from a health professional. People with a long term condition spend on average 4 hours a year with a health professional, which means the remaining 8756 hours are spent self-managing.

At the opposite end of the scale is "major trauma" where responsibility for care is entirely in the hands of the healthcare professionals, until the start of recovery when self-care can begin again.


The Practice website has lots of information and resources www.blackmorevalesurgery.co.uk/self-help/

Finally, Dr Yule, spoke about Integrated Neighbourhood Teams. This new vision for integrating primary care, is bringing together previously siloed teams and professionals to do things differently, to improve patient care for whole populations.

This works best with populations of 30-50,000. The Blackmore Vale Partnership and Gillingham Medical Practice have become a primary care network (PCN), where teams from across the network, wider primary care providers, secondary care teams, social care teams and domiciliary and care staff can work together to share resources and information and form multidisciplinary teams (MDTs) dedicated to improving the health and wellbeing of a local community and tackling health inequalities.

This doesn't directly affect your relationship with the Practice, but will provide a much more joined up service in the future.

**MARNHULL
ROYAL BRITISH LEGION
Charity Night
For Weldmar Hospice
and
North Dorset Bee Keepers Association
on Saturday August 10th
Featuring
The Rebbels
Doors open at 7.30 – music from 8.30
£5 on the door – with prize raffle**



THE PLOUGH
MANSTON.DORSET

THE PLOUGH FREEHOUSE

A beautiful 350 year old stone built country pub offering superb fresh homecooked food, excellent wines and great beers. After a two year renovation project Peter and Karlene have created a super cosy snug bar and a light and airy conservatory/dining area.

.....

Great traditional pub grub & specials menu.
Dietary Needs catered for.
Family & Dog friendly. Easy Access. Large Car Park.
Large Garden.

.....

The Plough Inn, Shaftesbury Road, Manston, Sturminster
Newton, Dorset, DT10 1HB.
Phone 07783 009402.
Website: ploughmanston.com

MARNHULL GREEN TEAMS

Taking the Environment Around Marnhull Seriously



By the time you read this Marnhull Green Teams will have held our Annual General Meeting.

We will have reviewed our activities over the past year - another very successful Giveaway & Takeaway Day; heat pump and electric vehicle information events; tours, talks and a morning chorus walk; and the installation of a bike rack at St Gregory's School - and will have agreed on what we will be doing during the year to come.

This will include another Giveaway and Takeaway, which we intend to make an annual Spring event, and the activities of our organic gardening group.

Our showing of the film 'Six Inches of Soil', focussing on the benefits of regenerative farming, was a sold-out event, and we are very grateful to all who helped arrange it, including the Marnhull Entertains team for all their logistical support. We hope to run similar events over the coming year.

Our recycling centre at the Hub - at the Village Hall on Saturday mornings, 10-12 - will remain open for business, and we intend to host a talk by the Dorset Council recycling team in the early autumn, to help us all better understand this useful but complex process.

Our parish environmental survey continues too. Our keen amateur surveyors are cataloguing what they can see from the public rights of way criss-crossing Marnhull Parish, describing the woods, hedgerows and 'wild' places, identifying significant trees, watercourses, marshes and ponds, checking on footpaths, and so on.

Individual survey areas comprise a morning's or an afternoon's walk - and you don't have to be an expert to join in! If you would like to hear more, get in touch at marnhullgreen@outlook.com.

We also want to keep up the community allotment and orchard in Sodom Lane - but these things do need someone to look after them. If you would like to be involved with the maintenance of either or both please let us know.

This is particularly important with regard to the orchard planted by village schoolchildren a couple of years ago. It's doing very well, and you will not be asked to do very much - but any help that you can give will be much appreciated, by the trees and by all who enjoy them in the years ahead!

Marnhull Music Club

Hilary Parker entertained the Music Club with a selection of classical pieces, starting with Beethoven's cello concerto, followed by a Study by Liszt (incredible piano skills needed).

Then a long piece by Sibelius, and Tchaikovsky's Slavonic March. A complete change with Rimsky-Korsakov's The Sea and Sinbad's Ship, and the last item before the interval, something that many of our mothers played - The Rustle of Spring by Sinding.

After the break, we enjoyed some popular pieces: Garner's Red Sails in the Sunset, and The Entertainer by Scott Joplin, and the whole of the lovely Rhapsody in Blue by Gershwin.

A contrast was Leroy Anderson's The Waltzing Cat, and another contrast in Britten's Storm from the Sea interludes. Finally Butterworth's Banks of Green Willow, conjuring up the English countryside.

A nice programme which was enjoyed by all. Next month's programme will be on 17 June, presented by Nick Lalor.



Dorset Follies



Dorset is full of curious buildings, towers, temples, obelisks, mock ruins and shell houses.

Mostly built to display wealth, passion and artistry.

A fascinating talk and stunning photos by

Jonathan Holt

Wednesday 3rd July, entry £4
7.30pm in Bow Room, The Exchange

Hot and cold drinks available at the bar

EXPECT *Far* MORE



At Farnfields Solicitors you can always expect a warm welcome combined with dedicated expertise and transparent straightforward pricing. All in all, when choosing us you can expect far more peace of mind.

e-mail: info@farnfields.com or visit www.farnfields.com

Farnfields
SOLICITORS

GILLINGHAM 01747 825432 | SHAFTESBURY 01747 854344 | WARMINSTER 01985 214661

No Gimmicks Quality Products



PITMAN WINDOWS
Windows - Doors - Conservatories

Combining a personal service with competitive prices using quality products

**Windows Doors Conservatories
Replacement roofs Fascia Soffits**

Tel 01747 840885 or 0800 0833623
Website: pitmanwindows.com



CLOCK HOUSE
Bed & Breakfast
Burton Street, Marnhull

Charming, peaceful, tucked away B&B in the centre of the village. Clock House offers four ground floor, ensuite bedrooms with terrace and garden access and a guest living room with woodburning stove. Dog friendly.
Discounted rate for Marnhull villagers booking direct.



Telephone: 01258 820645
info@clockhouse-marnhull.com
www.clockhouse-marnhull.com



Yenstone Walling

Dry Stone Walling and Landscaping

All types of stone walling undertaken

Patrick Houchen 01963 371123
DSWA member 07791 588141

www.yenstonewalling.co.uk



STAYSAFE



PASSWORD MANAGERS

CHRIS WALTON
Oak Digital Solutions

A password manager or password vault is an app or programme on your phone, tablet or computer that stores your passwords securely so you don't need to remember them. This allows you to use unique, strong passwords for all your online accounts. Many people use the same passwords for multiple accounts which, as I have discussed in previous columns, will leave you extremely vulnerable.

In addition, many password managers are helpful because they can:

- Synchronise your passwords across your different devices, making it easier to log on, wherever you are, and whatever you're using.
- Help you to spot fake websites.
- Let you know if you're re-using the same password across different accounts.
- Notify you if any of your passwords appear in a data breach so you know if you need to change them.
- Help you to generate safe and secure passwords.

Some password managers also allow you to store other important information securely, for instance bank account and credit card information, passport and driving licence details, photographs, notes and important files.

Many browsers (such as Chrome, Safari and Edge) also have the ability to save your passwords securely for you, but you should only do this if you are using your own device.

If you're using a shared computer outside your home, for instance at a college or library you should never save your password in a browser.

You should also make sure you are using the latest version of your browser (and operating system), and you should keep this up to date.

There are lots of different password managers. It's worth searching for online reviews, and finding one that meets your requirements. The National Cyber Security Centre (NCSC) www.ncsc.gov.uk also provides some technical guidance about the security features you may want to consider when choosing a password manager. Some anti-virus packages come with password managers built in or as an optional add on.

If you have an Iphone, Ipad or other Apple product you can use Keychain which is a very secure password manager system built into the Apple operating system.

It is important to protect your password manager account by choosing a strong 'master' password to control access to your password manager account (for example by using three random words). You can't store this password in the password manager itself, so if you can't remember it, it's OK for you to write it down provided you keep it safe and out of sight. Don't keep it or any other passwords in the note facility of your phone or tablet.

If you forget the 'master' password for your password manager, you will not be able to get back into your accounts. If someone accesses your password manager account, they will have access to all your accounts so with this in mind, the NCSC strongly recommends that you:

Turn on two-factor authentication on the password manager account. This means that even if a cyber-criminal knows the 'master' password, they still won't be able to access your password manager account.

They also recommend that you install updates for your password manager app as soon as you're prompted.

In conclusion whether you have trouble remembering to change your passwords, aren't very good at creating unique ones, or simply struggle to keep track of all the passwords our ever-expanding online lives demand a good password manager will help you protect your data.

About Me

I'm Chris Walton, I live in Marnhull and I can help with many of the problems that people experience with personal and home technology.

I have over 35 years' experience teaching people of all ages and all skill levels to use a wide variety of gadgetry and software both in the workplace and at home. I provide patient and friendly training carried out at your own pace, in your own home and at your convenience.

You can find out more at www.oakdigitalsolutions.co.uk or on my Oak Digital Solutions Facebook Page.

After each months column has been published it will be posted to my Facebook page as well as the blog on my website where you are welcome to comment and ask any questions.

HELP WITH ALL YOUR HOME TECHNOLOGY

Oak Digital Solutions

www.oakdigitalsolutions.co.uk



POUND CLASSES

Pound is a cardio jam session inspired by the infectious, energising and sweat-dripping fun, Instead of listening to music you become the music in this exhilarating full body workout that combines cardio, conditioning and strength training with yoga and Pilates-inspired move using ripstixs and a exercise mat, also B'Active with Hayley which is a little body conditioning with small weights and resistance bands along the way pm for more details Email hayley.sandell@gmail.com

www.sjcltd.co.uk 01258 471669 enquiries@sjcltd.co.uk

Simon John Christopher Ltd
Chartered Accountant & Tax Consultants



Accounts Preparation
Self Assessment Tax Returns
Tax Consultancy

Drapers House, Market Place,
Sturminster Newton, DT10 1AS



ENGINE EVOLUTION

DIAGNOSTICS - REMAPPING
REPAIRS - AIR CON
WHEEL ALIGNMENT
SERVICING FOR ALL VEHICLE MAKES

FREE COLLECTION AND DELIVERY OF YOUR VEHICLE

WE ALSO OFFER A RENT A RAMP SERVICE
CONTACT FOR MORE INFO

07504 511730 01935 362811



CLASSIC, RACE & RALLY CARS CATERED FOR

UNIT 11 / 12
GIBBS MARSH INDUSTRIAL EST - DT10 2RY
CONTACT NIGEL MARSH

WWW.ENGINEEVOLUTION.COM

**The Old Bank
Bed & Breakfast**

*Comfortable, friendly,
Family Home
In the centre of the village*

The Old Bank,
Burton Street, Marnhull
01258 821019
enquiry@theoldbank-marnhull.co.uk

*Wear me Out
Clothing Library*

Borrow occasion clothes from our clothing library with a variety of outfits for weddings, parties & special occasions, including handbags & hats.

Hawkers Farm SP8 5LZ

Contact us on:
07801 240103 or info@hawkersfarm.org



S.P. STOCKLEY
Plasterers

Mobile: 07867 931562

- Plastering
- Rendering
- Tacking
- Dry Lining
- Dot & Dab

TAXI – CAR



Courteous Lady Driver

Tel: 01258 820526
Mobile: 07929 983095

**PARTNERSHIP
FIRE AND SECURITY**

Contact
Tel: 01747 858888
enquiries@partnershipsecurity.co.uk



**Happy Pets and
Home Service**

House Sitting
Pet Care
Garden Care
Painting and Decorating
Call Juliet: 07773 566425

**ACCOUNTANCY PLUS
(DORSET) LIMITED**


CHARTERED ACCOUNTANTS
AND TAX CONSULTANTS

- Quick Books & Sage Expertise
- Accounts Management
- Personal & Corporate Taxation
- Book-Keeping

01258 820709

Email: info@accountancyplusdorset.co.uk
Contact: Mr Kim Harden, FCA, FCCA
4 New Street, Marnhull DT10 1PY

**SAXON
ROOFING SERVICES**



6 New Street, Marnhull DT10 1PY

Tiling, Slating, Leadwork, Timberwork
New & re-roofing work undertaken

Nick Upshall
Tel: 01258 821231
Mobile: 07801 851079
www.camelotbuilders.co.uk

AJS Plumbing & Heating
Plumbing & Heating Engineer

Tel: 01963 400503 or 07814 038852
Email: office@ajs-plumbingandheating.co.uk
Website: www.ajs-plumbingandheating.co.uk



Boiler Servicing & Maintenance
Air Source Heat Pumps/Ground Source Heat Pumps
Bathroom Installation Underfloor Heating
General Plumbing
Landlord Certificates & Power Flushing




On June 6th there was a short service at the memorial to Commemorate D-Day. As Rev Gaenor Hockey was not available we called on the the Rev. Angus Mayhew from Gillingham to stand in. There was a pleasing turnout and former branch Chairman Ian Kendall laid a poppy posy on the memorial. Thanks to all who attended and the Rev Angus Mayhew of course.

Unfortunately I was not well and missed the Everly Brothers/ABBA tribute night but I am informed that it was a good night especially the ABBA section and there was a good attendance.

Our next charity night will be on the 10th August and the proceeds will be split between Weldmar Hospice and the North Dorset Bee Keepers Association. The Rebbels will be performing and entry will be £5 payable on the door. We all know what a good job Weldmar do and the declining numbers of bees is becoming a big problem so both these groups need our help so please come and support us and them.

July and August Entertainment

- Saturday 6th July – Stage One
- Monday 8th July – Bingo 7pm
- Saturday 13th July – TBC
- Saturday 20th July – The Beagles
- Monday 22nd July – Bingo 7pm
- Saturday 27th July – Sensational 70's with Ant & Dave
- Saturday 3rd August – Cat and Mouse
- Monday 5th August – Bingo 7pm
- Saturday 10th August – The Rebbels £5 (Charity Night)
- Saturday 17th August – The Originals
- Monday 19th August – Bingo 7pm
- Saturday 24th August – Outrage
- Saturday 31st August – Baz and Debs

For Branch Business contact Jack Whitehead on 01258 820800

Or whiteheadjack51@gmail.com

Club business contact Tony Junge on 01258 820397

Tea With Friends

Our monthly get-togethers continue through the Summer. Join us for tea, cake and a chat second Wednesday of the month at the Methodist Church Hall 2.30 to 4pm. July 10th and August 14th ALL WELCOME

'EXTRAORDINARY' LOST CITY TREKKERS RAISE OVER £80,000 FOR STARS APPEAL

A group of Stars Appeal supporters who became "extraordinary together" to complete a trek to Colombia's Lost City are celebrating after raising £83,927. The 33 local people, aged from 80 to 23, walked between six and 12 hours each day, over five days, to reach the 1,500-year-old Lost City of Teyuna.

They faced torrential rain and sticky, slippery mud as they trekked through the rainforest. After their long days of walking, they stayed in simple communal bunkhouses, before getting up at 4.30 am to start again. And to get to the Lost City the trekkers had to climb 1,200 near vertical, ancient stone steps.

A special celebration evening was held on Tuesday, June 4, at the White Hart Hotel in Salisbury to announce the grand total raised by the trekkers for the Stars Appeal, Salisbury Hospital's Charity.

Salisbury Hospital Eye Consultant Dr Rashi Arora, who took part in the trek and is also a Stars Appeal Hospital Ambassador, said: "This was a group of ordinary people who became extraordinary together.

The trek was tough, you cannot deny that. We are people from everyday walks of life. I'm not a professional trekker, but the group made me feel like one." In total, the trekkers hiked over 50 miles and ascended over 3,400m – more than the combined height of the UK's highest mountains, Ben Nevis, Snowden, and Scafell Pike.

"When I saw them so passionate, not just about the trek, but about the Hospital and the Stars Appeal, it made me feel very humbled. It reminded me of the reasons why I became a doctor and renewed my sense of purpose," adds Dr Arora, who has seen first-hand the difference Stars Appeal has made in the Eye Clinic.

"The Stars Appeal funds a lot of equipment in the Eye Clinic, which helps us provide the best care for our patients."

During the celebration evening, the charity's president, the Earl of Pembroke, gave his thanks to the trekkers and to everyone who has supported them in their incredible fundraising.

Staff from the hospital, who volunteer as Stars Appeal Ambassadors, also spoke of the difference funds raised for the charity make to patients across the hospital. Money raised by the trekkers will help the Stars Appeal provide extra care and equipment across Salisbury District Hospital.

Amongst the projects the charity is currently fundraising for are high definition videoscopes for diagnosing head and neck cancer, 'By Your Side' sleeper chairs for those staying alongside loved ones in hospital and ongoing work such as the Stars Appeal Wi-Fi, hospital chaplaincy, cancer support and the Stars Appeal Play Assistant on Sarum Children's Ward.

The funds raised through the Lost City Trek and from previous Stars Appeal treks to Petra, the Grand Canyon, Machu Picchu in Peru, and the Great Wall of China, now give a five-trek total of more than £486,866.

Jayne Prigent, who has completed five treks for the Stars Appeal, said: "When we first suggested trekking for the Stars Appeal 10 years ago, we could never have anticipated that they'd be such a success, or that they could have raised so much."

The Stars Appeal is already planning its next trek adventure and the destination will be revealed later in the year.



C. BRISTOW & SON PROPERTY CARE
INTERIOR & EXTERIOR SOLUTIONS

30 years experience | Marnhull based

- General Property Maintenance
- Interior & Exterior Decoration
- Electrical & Plumbing
- Renovation & Home improvement
- Bathrooms & Kitchens

All works considered, no job too small.
07539 497828



Hawes Arborists

- All aspects of tree surgery
- Dismantling and felling
- Pruning
- Tree disorders and solutions
- Tree pest and disease analysis

Telephone 01747 850 253
e-mail info@hawesarborists.co.uk

We are very proud to have received Arb Approved contractor status and are covered by the Government accredited Trust Mark scheme.
NPTC Certified • Tech.Arbor.A Qualified
All work carried out to BS3998 Standards






BLACKMORE VALE FOOT CARE
EST 2005

Foot Care in the Comfort of Your Home.

Corns, calluses, problem nails etc.
Friendly, female practitioners


www.bmvfootcare.co.uk
01258 820203 | gillian@bmvfootcare.co.uk



Vale Electrics

- New Installations
- Rewires
- Replacement Consumer units
- Condition Reports
- Fault Finding

Tel: 01258 821420 Mob: 07740403033
Email: valeelectrics@hotmail.co.uk
8 Plowman Close, Marnhull, DT10 1LB

Peter Jackson Funeral Services
Independent Family Funeral Directors

Henstidge
01963 362570

Gillingham
01747 833757
office@peterjacksonfuneralservices.co.uk

FUNERAL PLANS FROM
Golden Charter
Smart Planning for Later Life




PESTWRIGHT


Happy to help if you have problems with
Rats, mice, moles, squirrels, wasps etc.
BPCA qualified. Insured

Call Jim on
07854395112

R&S LEWIS JOINERY

Purpose made fitted wardrobes
bookcases, cupboards,
hardwood windows,
doors & gates.

lewisjoinery@hotmail.com
Workshop 01963 363862



POUND
ROCKOUT. WORKOUT.

CLASSES IN BROADSTONE, WINGANTON, MARNHULL,
MOTCOMBE, OKEFORD FITZPAINE

**CONTACT: HAYLEY SANDELL,
POUND PRO**
07786 553889
HAYLEY.SANDELL@OUTLOOK.COM

GRASSBY & CLOSE FUNERAL SERVICE

4 Innes Court,
Sturminster Newton,
Dorset DT10 1BB

01258 471024
www.grassbyclose-funeral.co.uk




MARNHULL HORSE RIDERS



Horses and climate change

This year has been unreal in terms of rain, wet and land management but also grass growth - warm and wet - and everything is growing - for me, we have too much grass which brings its own challenges.

Now (as some of you know) I own two native ponies and it's a completely different ball game to owning a thoroughbred (I think I owned the lot over the years!).

Natives need very little grass - even sparse pickings and the slightest increase or change to this can create major health issues and the red warning light goes on!!

The rich grass sugar levels can lead to equine problems for sure and I'm on constant watch with my two!! I'm always looking at ways to keep them happy but reduce their sugar in take - they are horses after all??

Too much sugar can cause lameness, sore feet and easily develop to laminitis. This summer I am limiting my ponies grazing and when they are out, they are muzzled. But hey they may protest but that's life It's that or in!

For years with my others, I have always strip grazed, but now as the climate changes (rain and warmth) it's another challenge. I am now setting up some small paddock areas as grazing tracks.

It's easily done with fence posts and tape (I electrify one but the other is fine without). Mine are about 12 feet wide. I have seen immediately that my Fell is moving the whole circuit, still happily grazing away, but moving around.

I believe this way is a more natural form of grazing for them. If you have thoroughbreds (lucky you) but I guess, long term, all breeds can be susceptible to laminitis.

Prevention is much better than cure and we all try and wish the best health for our ponies and horses. Less vets bills for sure - please. Let's hope we can enjoy some warm summer weather, less rain and a bit less grass this year!!

Happy to chat if anyone wants to know more. I have had some amazing help over the last 18 months with the Top Spec helpline and also the Spillers Slimmers (on facebook).

Marnhull Flower Show



The Flower Show is here! Join us on Saturday 6th July in the Village Hall and Recreation Ground for what promises to be a fun filled day. Here's all you need to know. The Show opens to the public from 12 noon. Food and refreshments will be available, including tea and cakes, ice cream, burgers and hot dogs, and a bar serving wine, beer and soft drinks.

There'll also be stalls and displays, including the Marnhull Garden Club, Table Tennis Club and tombola. You can enjoy the exhibits in the Village Hall and Marquees and there'll be entertainment throughout the afternoon from the Shaftesbury Ukulele Band, the Wessex Morris Men and the Marnhull Community Choir.

Weather permitting, there'll also be a display of classic cars and motorbikes. Prize Giving will take place at 3.30pm. We're hoping that there'll be a bumper number of entries in 2024. There have been some challenges this year with the weather and the slugs and snails, but remember that everyone will be in same boat!

We're looking forward to seeing what you have grown, made, baked and taken this year, including your wonderful sunrise/sunset photos. All art and photography entries, including children's art entries, must be brought to the Village Hall on Friday 5th between 5 - 7pm. All other entries can be brought, either on Friday, or on Saturday morning between 7 - 9am, although you might want to wait until Saturday to bring your fresh flowers, vegetables and fruit to ensure they're in peak condition.

The deadline for entries for the Show is 5pm on Tuesday 2nd July. Entry forms can be found in the Show Schedule available from Robin Hill Stores or the Spar shop on New Street. You can enter as many classes as you want and there are also classes for those who haven't entered the Show before, so do give it a go. Parking will be available in the morning of the show for the drop off of entries, but only disabled parking will be available after 9am.

We look forward to seeing you there!

SINGERS/ DANCERS/ ACTORS WANTED

SNADS SUMMER MUSICAL

AUDITIONS

Tuesday 2nd July 7:30pm
At The Exchange

To receive audition material email,
snadsdorset1930@outlook.com
Or message us on Facebook, Snads Dorset



Wessex Internet

Register your interest!

Say hello to ultrafast fibre

Enjoy effortless video calling and buffer-free streaming with fibre broadband from Wessex Internet.

- Lightning fast**
Download speeds up to 900 Mbps
- Reliable connection**
Zero buffering or annoying drop outs
- Local support**
A friendly support team based in Dorset

Full fibre is coming to **Marnhull**. Visit wessexinternet.com

Remedial & Recovery Massage

In the Comfort of your own Home

Highly Experienced and Fully Insured

Google Reviews ★★★★★
facebook ★★★★★

Elements
MOBILE MUSCLE RECOVERY MASSAGE

Mobile Massage in Marnhull

Elements is a local, convenient & comforting mobile massage service dedicated to delivering clients a professional and enjoyable mobile experience at home, in the office, or in your holiday let.

A dedicated service to help relieve your aches & pains.

www.elementsmobile.co.uk

☎ 01258 269789 ☎ 07902 999136

The Curtain Man

Curtains ~ Blinds
Tracks ~ Poles
Fabrics ~ Cushions
Measuring & Fitting Service

Burton Street, Marnhull, Sturminster Newton,
Dorset. DT10 1PH
T: 01258 821117
E: thecurtainmanshop@gmail.com

Animal Awareness



A HOLISTIC APPROACH TO HOW WE BURDEN OUR PETS

SALLY PALMER-WALTON
Wild Life Wellness

This might be an unpopular opinion but I believe in the last few decades we've placed an unobtainable standard of perfection on our pets. Whatever species you have, they're now expected to be a social extension of us, not "just a" dog, cat, horse, ferret etc. Social media flaunts animals as celebrities, construed as perfect pets, and subjected to whatever situations, dress-ups, and sponsorships their owners deem to be revenue enhancing.

We need to step back and realise we're placing unrealistic expectations on the animals we choose (they don't get a choice!) to live with us, which is unfair to them and can lead to normal animal behaviour being viewed as problematic, something to be corrected. Some owners who see their pet's behaviour as not meeting their level of perfection will simply abandon them. Understanding that each animal has their own needs, personalities and breed traits is essential to fostering a healthy, sustainable relationship with another species.

Even before adopting a pet, we should realise that we are solely responsible for providing adequate nutrition, healthcare, mental stimulation, and socialisation to that animal, throughout their lifespan. This takes time, commitment, and realistic expectations. Yet a massive 87% of dog owners surveyed by The Blue Cross charity said that their perfect dog would be able to:

- Be socialised in a month
- Be good with people and kids and accepting of any and all situations we put them in
- Need only 30 minutes a day to play with/walk
- Not wet/mess in the house
- Not destroy household items.

Surprisingly, the survey also reported that women were more likely to give their dog up for adoption if they weren't perfectly well behaved – even when they had made no effort to train, socialise or stimulate their charge!

It's totally unrealistic to believe that a pet can always behave perfectly. Do we? Do our children? Training takes time, commitment and consistency, and even well-trained animals can have moments of disobedience or mischief. If you only spend 40 minutes a day with your pet, with no additional playtime or focused attention, then don't expect them to comply with your notion of a well-behaved animal.

There's also an assumption that if you pay a dog walker, or doggie daycare that the dog is being well-provided for. But not all dogs enjoy the daycare environment or enjoy walking with someone other than their family. We must take the individuality of the pet into consideration. Just because Fido loves daycare doesn't mean Fudge will. Just because your cat doesn't like being slung over your shoulder, doesn't mean they're not a great cat. Humans are the same: your partner might be very sociable whilst you prefer nothing more than a quiet night in watching Bridgerton. Stop expecting them to change because you want them to!

If you leave your pet for long hours every day and return home angry, upset, or just plain tired you can't expect your pet to understand why you want to be alone. They've been waiting patiently for your return and, just like being a parent, you need to take some time out to play, walk, and nurture your pet. They're not just an accessory to your lifestyle - all pets

require time, attention and adjustments made by you to accommodate their needs.

We tend to attribute human-like qualities to our pets, projecting our own emotions onto them, and expecting them to react in a human manner. But pets perceive and interact with the world differently.

If we think they should express gratitude, feel guilty for misdeeds, or understand complex human emotions we will be disappointed - but that doesn't mean they're failing to be a good pet.

We are, instead, failing to understand their needs and reactions. Pets undoubtedly bring joy, comfort and companionship, but they're not substitutes for human relationships or solutions to our own emotional struggles.

Also, don't expect their constant presence. Pets don't always want to play or cuddle. They need their own alone time – it helps them 'reset' and energetically detox from any negativity they've picked up from an activity or from you (stress, worry, anger etc.).

Let's try to move to a future where we can see another species' point of view:

- They are trying to fit into a world we created for us, not them;
- They are doing the very best they can with what we provide for them;
- They have few opportunities to make their own choices;
- Their body language as communication is often ignored or misunderstood.

Perhaps the measure of fairness lies not in how closely our pets conform to human standards but in the mutual trust, understanding and companionship we share with them.

HOLISTIC ANIMAL HEALING AND AWARENESS
Wild Life Wellness
www.wild-life-wellness.co.uk

MARNHULL PLAYERS PANTO

On Thursday 13th June we met up and had a joke night, we thought it would be a fun way to get everyone to together and introduce the new people to the group and it was a way of including everyone. It was a lovely evening, lots of great jokes for us to use and great company.

I can reveal the chosen pantomime is 'Peter Pan' we can't wait to get started. Jo has written the first draft of the script which the team will go over and make it to the final core draft, as we all know cast members change things once they see the script and things we try might not work so need tweaking.

We have booked rehearsals to start in October, which seems a while away but we have loads of other things going on behind the scenes like working out casting, music, special effects, costumes, scenery, advertising and much more.

Things are getting exciting and preparations are starting so come October we can get going.

We look forward to giving you an update in September issue, until then have a lovely summer and hope to see you in January/ February when we fly in to the performances.

Would you like to be involved in this fun pantomime group? Even if you don't want to be on stage, there's plenty of roles to help out with - no experience needed, we would love to have you on board. Contact Emma at marnhullplayers@gmail.com

Thanks
The committee and Cast

Paul Woodrow
Home and Garden Services



Fully insured garden maintenance and handyman service across the Blackmore Vale

07392727584

office@woodrowhomeandgarden.co.uk @woodrowhomeandgarden

www.woodrowhomeandgarden.co.uk

OAK DIGITAL SOLUTIONS

HELP WITH ALL YOUR HOME TECHNOLOGY

- e-mail accounts, software and apps
- Wi-Fi connections and printer problems
- Setting up new equipment
- Friendly personal training in your home

computers, mobile phones, tablets, laptops
printers, Wi-Fi, smart TVs, e-books and more



Call Chris on **07758 032062**
oakdigitalsolutions@gmail.com
www.oakdigitalsolutions.co.uk

NorDDis
North Dorset Disability Information Service

We can provide the following:

- New & used equipment
- Hire equipment
- Disposable items
- NHS hearing aid batteries
- Information & advice
- Volunteer opportunities
- Call us for information

Open 10am to 4pm Tues, Thur & Fri
10am to 1pm Sat.

3 Newbury, Gillingham
SP8 4QX (Opposite Lidl)

Te. 01747 821010

www.norddisorset.org.uk

Reg. Charity No. 1110328

Vale Auto Services Ltd
The Vales Driving Force

All makes and models serviced

Fiat, Isuzu and Subaru specialists

FIAT ISUZU SUBARU Lanoguard

A first class service at less than half main dealer rates

We can service your vehicle without affecting the manufacturer's warranty

Electrical and Mechanical Diagnostic, Repair & Maintenance

- MOT Testing • Tyre Replacement • Puncture Repairs
- Wheel Balancing • 4 Wheel Laser Alignment
- Dealer Level Diagnostic Equipment
- Professional Work at Affordable Rates
- Courtesy Cars • Local Collection and Delivery Service

ALL WORK CARRIED OUT TO THE HIGHEST OF STANDARDS
Under chassis steam cleaning and rust treatment now available

Bazeland Hill, Shaftesbury Road,
Henstridge, Somerset BA8 0TD

Tel: **01963 362843**
valeautoservices.co.uk



Revsol Property Management Ltd

offer a complete service covering :

- Management of Property lets both short and long term
- Holiday Letts
- Keyholder service
- Property security
- Regular and one-off cleaning service
- Property maintenance

For further information call Duncan on
Main line: 01258 820870 mobile: 07966 016686
or email revsolpropertymanagement@outlook.com




THE METHODIST CHURCH

I hope you are enjoying the warmer weather and aren't the roses in particular putting on a beautiful display this year.

Marlene, who has regularly helped to run the Girls' Brigade in a voluntary capacity for many years, lets us know below some of what the girls have been doing recently. The girls find the many activities they do enjoyable and interesting and so perhaps your daughter would like to join in September?

'The older girls have been looking at Using Leisure time, a precious gift from God and the importance of using it wisely. They have also been learning about famous Christians e.g. Cliff Richard, Michael Faraday. The middle group have been thinking about Courage, focussing on the Apostle Paul and the courage he needed as he wrote to the early churches and suffered himself. We looked at his shipwreck journey and his word to the Philippians, 'I can do all things through Christ who strengthens me'.

The younger group have been having fun looking at their favourite things, including making musical instruments, decorating cakes, making flowers, modelling their favourite clothes and having a visit from a favourite dog. The last weeks of term will be spent on doing a local footpath walk, a games evening and an awards evening with visiting parents.

The Girls Brigade continues to meet on Wednesday evenings in the Methodist hall from 6.15 to 7.30 pm, in term time, for girls aged 4 and over. After the summer break we will restart in September. New girls are always welcome, for further information please contact Rachael Findlay on 07771 897262.

Quiz Night:

Not being superstitious, we are holding a fundraising **Quiz & Raffle at 7pm on Friday 13th September** in the Methodist Church Hall. There will be tables of four. Light refreshments will be served and all for only £7.00 per person. Join us for a fun evening testing your quizzing skills!

Our Sunday services start at 10.00, finishing about an hour later to enjoy tea, coffee, biscuits and a general "catch-up" and you are very welcome to join us.

"Give thanks to the Lord for he is good, his love endures forever." Psalm 118 v 29

BISHOPS LETTER

New Horizons

From my bedroom window I have a great view of both Preston Hill and Hambledon Hill. The Wessex Ridgeway Path passes across them, which spurred me, during my period of study leave earlier in the year, to walk that entire path from Marlborough to Lyme Regis. It took me across many new horizons, across the Wiltshire Downs, around Salisbury Plain and down through the Marshwood Vale to the coast. It was a great walk albeit very boggy in places given the February rain.

The Summer gives us the chance to explore new horizons, whether it be to revisit somewhere close by enjoying some sunshine, or to explore a new place on holiday or a day out. The Bible invites us to enjoy the splendour of creation, to admire God's handiwork and to take time out with him reflecting on the past and the future.

This summer will also bring a new political horizon, as we pray for our newly elected leaders and continue to pray for the wellbeing of our own country and the peace of the world.

Horizons help us journey on through life in hope, with the assurance that the God of the universe cares for us all very deeply. It is by asking Christ to walk with us through each day, whatever that may bring that we find true contentment, and often some unexpected surprised on the way. This next month let's commit to doing just that and begin each morning with the words of the psalmist. 'This is the day that the Lord has made. Let us rejoice and be glad in it' Psalm 118:24

Bishop Karen

OUR LADY'S CHURCH

SPUC is a grassroots campaigning organisation.

We defend the right to life from the moment of conception until natural death.

We do this by spreading our message far and wide right across the UK - educating, inspiring and empowering people to get involved so that we can achieve real change.

Project Truth is the UK's largest pro-life youth outreach initiative. We bring young people together to take the pro-life message to the streets.

We focus on starting conversations with the public on the issue of abortion and distributing information on the development of unborn humans in the womb, crisis pregnancy support centres, and post-abortion care centres.

Further information or help: <https://www.spuc.org.uk/>

Are you are interested in finding out what Catholics believe; or want to consider becoming a Catholic? Our Parish can guide you and provides teaching and support within the friendly Catholic community.

Christian faith is a way of life – it is about seeing the world in the light of the gospel and trying to live our life in accord with that. Everyone lives their own life with all the ups and downs, all the disasters and successes that make it up.

For Christians that is the teaching of Jesus and the faith that the Church presents to us. We are all invited to live our own particular life guided in that way.

For further information please contact the parish priest Fr. Joseph or Deacon James on Email: James.Mackain-Bremner@prcdtr.org.uk

General Election 2024

The Prime Minister has called a general election for Thursday, 4 July. There is a range of information and guidance on key issues of importance to us, as Catholics, to help inform how we vote.

Gospel values inform how we look at the world as Christians. These values can also offer a different way of looking at politics, a way that puts the common good before self-interest.

The Catholic Bishops' Conference has guidance on issues such as criminal justice, poverty, migration, education, international relations, life issues and the environment <https://www.cbcew.org.uk/election24/>.

CAFOD and SVP have also produced a joint resource 'Year of Encounter' with a range of questions to ask potential candidates <https://cafod.org.uk/encounter>



ST GREGORY'S C OF E PRIMARY SCHOOL



This has been a very busy month for everyone involved in the school as we have been celebrating our 150th Anniversary in style!

Over a number of weekends, staff, parents, grandparents, children and friends of the school came in to help the outside areas look wonderful.

A key project for this was the designing and building of our new Spiritual Garden, paid for jointly by proceeds from the Quiz held earlier in the year, and by our community bid from Tesco's blue token initiative.

A bit like the old Challenge Anneka programme, we were working against the clock to lay paving stones, build raised beds, paint a celebration mural and spread bark chippings in time for the Bishop of Salisbury's visit on Monday June 3rd.

After weeks of cold and wet weather, we were amazingly lucky as our week of celebrations opened with a special service, led by Revd. Gaenor with an address and blessing of our new school banner by the Bishop, in the church on the Monday afternoon.

The Bishop then returned to the school to bless the newly finished Spiritual Garden, and joined the children in a piece of the splendid and delicious cake made for the occasion by one of our parents.

He then spent the rest of his time having a tour of the school led by the Worship Ambassadors, announcing that he had had a lovely day.

We had, too, and wished him well with his engagement the following day – preaching at a service for King Charles III!

The rest of the week saw the children performing traditional and not so traditional country dances, putting on a display of their artwork in the hall, mounting an exhibition of artefacts from the school's past, listening and posing questions to a teacher who was here when the school celebrated its centenary, spending the day in Victorian costume learning all about education 150 years ago, and designing and building a model of their 'School for the Future' – a glimpse of what St Gregory's might look like in another 50, 100 or 150 years.

The festivities concluded with a shared event with the Jungle Hut PreSchool, Greg's Jungle Fun Day, where the school field was transformed by barbecue and beer tents, a dog show arena, stalls run by local businesses and the children themselves, bouncy castles, and in the evening, the outdoor classroom became an excellent stage for our live musicians who performed until dusk.

It was a very exciting week with the school brilliantly supported by the parents, governors and staff, further punctuated by activities around the 80th Anniversary of D-Day, starting swimming in the school pool, and having a very successful squad representing the school at the Area Athletics in Yeovil.



Hedgehogs Class

In Hedgehogs Class we have been busy learning about what life was like for school children 150 years ago as part of our 150th anniversary celebrations. We all dressed up as Victorian school children and took part in activities that they would have undertaken during a typical school day. Activities included drill on the playground, playing traditional games such as tiddly winks and marbles as well as handwriting practice. We all enjoyed a busy week of looking back at the past and thinking about how our school will change in the future.

This half term we have two enquiries **What is home?** and **How do plants grow near me?** We are exploring which animals live locally and the homes they make. Alongside this we will be investigating what plants need to grow, placing them in different locations in the school environment and watching what happens to them and recording how well they grow. As part of our challenge we will be learning about the plants that grow in our new spiritual garden and creating a plantopedia to inform others what they are and how they grow best. When learning about What is a home? the children will be creating a local animal home using clay and making a video to explain its key features.

In English our class story is The Tiny Seed by Eric Carle. The book teaches us how seeds grow into plants and the best conditions for this. Reception children will be creating labels for parts of a plant as well as drawing those in our garden centre role play. Year 1 children will be writing an explanation of how plants grow best and what they need to do this.

We have been lucky enough to have started our swimming lessons for this half term in the school pool, becoming water confident and practising our techniques when using a float. We are looking forward to continuing to use this fantastic facility during the summer months and becoming confident swimmers in the future!



Badgers Class

As authors Badgers were learning how to write a persuasive letter. Surprisingly, one morning as they walked in, all the chairs were on strike and the class worked really hard and used their persuasive writing skills to persuade the chairs to come back to class. A fun filled experience lesson had by all.

As scientists, we have been learning about healthy eating "Why are food choices we make important?" We learnt all about the digestive system, different types of teeth and their functions, food chains, seasonality etc. Children also got a chance to look at healthy recipes and we made burgers using a variety of vegetables.

We also had fantastic first week back celebrating the schools 150th Anniversary with lots of fun activities as well as an experience day on the Victorian Era.



Foxes Class

Foxes Class have had a busy start to the term. We enjoyed the first week back of festivities to celebrate the school's 150th anniversary – the Victorian dress up day being a particular highlight providing the children with a valuable insight into how different school life is today. The class also learned about D-Day, marking this also significant anniversary with thoughtful activities. We have begun gathering knowledge to answer our enquiry question, 'How do we all live together?', which will be an exploration of democracy and systems of power beginning with the Ancient Greeks. Alongside their studies, the children have already been busy practising for our end of term performance and leavers services.



ST MARY'S CATHOLIC PRIMARY SCHOOL



We are already into the last half term of the school year! This year has flown by!

Before Half term, the Year 6 children tidied up the school grounds as part of Laudato Si' week.

The children have returned to school ready for learning. Years 2, 5 & 6 had a workshop on 'Speak Out, Stay Safe' from NSPCC volunteers.

This work led on from the assembly and lessons that Y2 and KS2 had in class.

Key Stage 2 children had the privilege of listening to Mr Gassman demonstrating a range of woodwind and brass instruments. They were very excited at the prospect of learning to play a saxophone!

St Anthony's

We have begun learning about the many different creatures that live on our Earth. The children have taken a particular interest in the minibeasts that they found in the school grounds.

We are enjoying sharing stories with a minibeast theme, they particularly enjoyed the story Super Worm and were able to create their own super minibeast stories.

St Mary's Explorers

The children have spent a lot of time enjoying our outdoor space, gardening and exploring nature.

Water play has been a hit and it has been lovely seeing the smiles on the children's faces as they play alongside their peers.



We shared the story of the Hungry Caterpillar and the children are growing their own caterpillars in class.

This term we've had lots of new children join our preschool class, they have been warmly welcomed by the children and are valuable new members of our school family.

St Mary's Explorers is open from 8:45am – 3:15pm every weekday during term time and spaces are available for children aged 3 years +, with wrap around care from 8am – 6pm on request.

The unit allows preschool and Reception children to work together on lots of key areas of learning. We still have places available for September.

If you would like to come and visit the school to see what we can offer your child, contact the school office office@stmarymarnhull.dorset.sch.uk 01258 820417 or just pop in! (Early Education Funding vouchers accepted and 30hrs funding available).

St Mark's

The children have come back with a fantastic attitude towards their learning for the final half term of the school year. We have started our science unit on rocks where we got a variety of rocks out to explore. We used the magnifying glasses to look really closely at the rocks and then the children grouped them based on smoothness and roughness. The year 2 and year 3 both had different rocks, so

it was interesting to see how they grouped them.

Our geography topic is St Lucia and we have been looking at the location of it and human and physical features of St Lucia. I always love the last half term of the year as they children and I have so much to look forward to with school performances, trips, sports day and many other events happening.



St Francis

The children of St Francis' class have had a jam packed first half to the Summer term. They have been learning about Anglo- Saxons in History and they learnt how to programme in ICT.



In Literacy the pupils have written a script about the water cycle for a guided tour, they have also researched and written about the Nitrogen cycle and the Carbon cycle. In Numeracy we have been learning about decimals and percentages.

This term's PE has included Cricket, Tennis, Rounders and also they have just started learning about the Maori war dance 'The Haka'. We are also all very excited about our Residential trip to Springhead in a couple of weeks.

St Alban's

It has been lovely seeing the Year 6 children back for their final term at St Mary's.

Already we have enjoyed finding out about why we look the way do as part of our science topic by using characters from the Mr Men and Little Miss books.

The children have also been researching and collecting information about their favourite animals before writing a non-chronological report.

The children are also learning about budgeting and architectural design in maths by designing their own zoo using given criteria.

Some of the Year 6 children have recently taken part in the North Dorset Handball finals.

They represented the school brilliantly and have now qualified for the regional Dorset Handball finals in Bournemouth – Great stuff!

We are also busy using any spare time to clock up miles for on our 'Path to Paris' mission.

To celebrate this year's Olympic and Paralympic games, the children of St Mary's are taking part in the Get Set virtual journey to Paris.

Each time they complete a sporting activity, the children help to add miles around the world finally ending up in Paris.

We have children who have been competing in Tae Kwon Do, pony racing, swimming galas, cricket matches as well as many sporting activities in school – keep up the amazing work all.

MARNHULL ENTERTAINS

One Love is a 2024 American biographical drama musical film based on the life of reggae singer and songwriter Bob Marley, played by Kingsley Ben-Adir, from his rise to fame in the mid-1970s up until his death in 1981.

It also stars James Norton (Happy Valley)



Marnhull Village Hall

23 July 2024

at 7.30pm

Doors open 7.00pm

Tickets: £5.00

Available from:

Robin Hill Stores: 01258 820959 or

Marnhull Stores: 01258 820116

BEING HERE FOR EACH OTHER

If you are grieving over someone or something you have lost, come and join our friendly, informal group to find support and explore ways to cope. Friday 12th July, 10-11.30am (monthly)

Marnhull Methodist Church Hall, Burton St DT10 1PS

For more details please contact End of Life Doulas Flora on 07778 431264 or Nicky on 07975 570381

Sturminster Newton Charity Car Boot Sale First Sunday of the Month. From May to September 2024 Raising funds for local charities. The Vale Pantry, Sturminster Newton & Hedgehog Rescue of Hazelbury Bryan. To be held at The Exchange Car Park Sturminster Newton. May 5th June 2nd July 7th Aug 4th Sept 1st. Sellers from 10am Buyers 11am. Cars and Small Vans £6 Large Vans £10. No need to book. Dogs Welcome. Toilets & Refreshments available.

MARNHULL FEST 2024. LIVE MUSIC FUN FOR ALL AGES! FRIDAY 19TH JULY 2024. SATURDAY 20TH JULY 2024. VENUE: Marnhull Recreation Ground DT10 1LB.

Williams Florist floristry & gardening. Do you have something special to say? Full florist service available. Local delivers & Eflorist relay members. Station Road, Stalbridge Dorset, DT10 2RQ. Tel: 01963 362355. Email: williamsflorists@live.co.uk www.williams-florist.co.uk

ASA architects. Based in Shaftesbury. Projects throughout Dorset, Wiltshire, Devon, Cornwall, Somerset and beyond. New Build • Extensions • Conversions • Listed Buildings • Refurbishment. Planning Applications • Building Control • Construction. Tel: 07770 421624. Email: andystrange@btinternet.com www.asa-architect.co.uk

OXFORD Building & Carpentry Ltd. Complete House Renovations • Staircases Remodelled • Kitchen And Bathroom Installations • 1st And 2nd Fix • Cut And Truss Roofing • Replacement Doors. Contact Pete Oxford T: 01258 820850 M: 07970 156735 oxfordp@yahoo.co.uk Chippets, Chippel Lane, Marnhull DT10 1NN

DECORATOR & HANDYMAN. Professional painter / decorator / handyman Experienced, friendly, local & reliable Richard Weetman. 07787 558862 01258 920677 richard.weetman@hotmail.com

Boilerwise Ltd Specialist Boiler Engineers. Repair, Service, Maintenance and Replacement of OIL and GAS Boilers. Heating System Fault Diagnosis and Repair. Landlord Certificates, Systems Surveying and Power Flushing. 01258 474605 24hr Gas Safe and Oftec Registered Engineers. 572546 OFTEC C6413

Marnhull Cars. Local & Long distance Taxi Hackney & Private hire Comfortable Mercedes Benz cars. Call or text Sheldon 07931911279

BURROW. Replace your Septic Tank with a Wastewater Treatment Plant and protect the value of your home. Most septic tanks in locations with heavy soil, or located close to a ditch, stream or river need to be replaced. We are a local specialist and since 2019 we have helped almost 200 homeowners to upgrade. Contact us for free advice. burrow-environmental.com 01935 507 508



Marnhull Neighbourhood Plan

We have had great news this Month, we have been awarded a further grant of £9725. This will be the final tranche of funding. In mid June we are having a meeting to confirm we also have funding for a Strategic Environmental Assessment. Fingers crossed!

A Conservation Area Appraisal has been underway for sometime now and we have had two initial meetings where households of the areas affected have been notified and consulted. The Parish meeting on the 29th May was open to everyone. We had some valuable feedback from all the meetings. Her's some background on the process:

Definition of a Conservation area

An area of special architectural or historic interest, the character, appearance or setting of which it is desirable to preserve or enhance

Why are we doing this appraisal, why now and under who's authority?

- Appraisals are often prepared by local planning authorities but partnership with local communities is becoming increasingly common. We are working in conjunction with Dorset Council.

- There has not been an appraisal since Marnhull's conservation areas were designated in 1970.

- As part of the Neighbourhood Plan an up to date conservation area appraisal is required. The appraisal will be a material consideration in planning decisions.

- This is particularly important in responding to concerns expressed in the recent Parish Survey over preserving the character of the village.

- Research for the appraisal has included local history studies, architectural reviews, historic area assessment, character studies, Historic Environment Record and historic photographs and maps.

What is a Conservation Area?

- The first conservation areas were designated in 1967 under the Civic Amenities Act, there are now nearly 10,000 in England. (At the time there was widespread concern over the pace of redevelopment in our historic towns, cities and villages)

- Originally the only things that were automatically subject to control were the felling or lopping of trees and the demolition of buildings. Over the years, the rules have extended with each planning authority having a 'local direction'.

- The fact that Conservation Areas enjoy protection from poor-quality development means that they've become more desirable as places to live, which in turn is often reflected in higher property values.

Local Planning Authorities are under a duty to designate Conservation Areas within their locality and to review them from time to time. The Planning (Listed Buildings and Conservation Areas) Act 1990 imposes a further duty on local planning authorities to review the extent of their functions and if need be to designate any further parts of their area as Conservation Areas.

This means that the Council is duty-bound to review existing and potential new Conservation Areas and, where areas are identified that meet the criteria to be within a Conservation Area, the Council has a duty to designate these areas.

You are invited to an open meeting at 18:30 on 2nd July 2024 at the Village Hall to discuss the findings. This will be in conjunction with the consultation on the Design Guidance and Codes. This document which has been drawn up for us by specialist consultants will be on the Parish Council Website along with maps of the proposed conservation areas. We also look forward to seeing you all at the Flower Show and Marnhull Fest, where you will be able to look at all we have been working on and give us your thoughts.

We have asked Dorset Council to adopt Marnhull's Design Guidance and Codes as a Supplementary Planning Document (SPD). They have

said it would not be appropriate to adopt parish-specific design codes/documents as SPD's. However, they have said they can make the documents available on the Dorset Council Website, and development officers would bring it to the attention of applicants for building schemes in Dorset. It would then have the status of a non statutory document.

Before doing this we need to hold a 4 week public consultation. This would be a way of giving the document more weight, before the Neighbourhood Plan is finished. The consultation will start from 1st July 2024 and continue to the 26 July 2024. We look forward to your feedback. details of how to respond will be posted on the Marnhull Parish Council website, on Facebook and posters around the village. Please take the opportunity to comment.

We are also designating some Green spaces and open areas throughout the village. These will be shown at the Flower Show and Fest.

We are working on a plan for Traffic in the village, where a group has been charged with finding ingenious ways of slowing traffic and making it safer to walk around the village.

We are looking forward to sharing their findings.

Hope to see you at 18:30 on 2nd July 2024 at the village Hall.

Marnhull Neighbourhood Plan Consultation 2nd July 2024



18:30 2nd July 2024 at the Village Hall

We are having a consultation on the Conservation Area and Marnhull's Design Guidance and Codes

A chance for us all to develop a shared vision of Marnhull's future. Further details at marnhull-pc.org.uk

BEAUTY & MASSAGE THERAPY

SARAH JAMES
B.A.B.T.A.C | L.T.E.C | C.I.B.T.A.C

Remedial massage and Aromatherapy.
Bespoke Facials including LED therapy.
Electrolysis, Waxing, Lash and Brow treatments.
Manicures and Pedicures including Shellac.



BLAKES COTTAGE, CARRAWAY LANE,
MARNHULL, DORSET, DT10 1NJ
TEL: 01258 268936
MOB: 0787 0983 172

Jill Cook
Counsellor
BACP Senior Accredited
www.jillcook.co.uk

I offer support for issues including anxiety, depression, relationship difficulties & bereavement

For more information please contact me
07944 669416
Marnhull

BRAMALL GARDENS LTD

DESIGN—LANDSCAPING—MAINTENANCE

EXPERIENCED IN ALL ASPECTS OF GARDENING

FAST AND EFFICIENT
ALL RUBBISH REMOVED




☎ : 01258 820394 MOBILE : 07971 793 872



Lavenders Green

Complementary Therapies
Yoga, Reiki, Reflexology, Massage, Aromatherapy
Human Givens Psychotherapy/Counselling & Radionic Treatment

Tanya Green ITEC
Traditional Yoga Association
T: 01258 820410
M: 07729 301387
E: tanya@lavenders-green.com

Online Yoga classes available at www.lavenders-green.com

The Blackmore Vale Inn
MARNHULL . DORSET



Nestled in the heart of Dorset's beautiful Blackmore Vale Charlie, Sasha and family welcome you to:

The Blackmore Vale Inn - one of Dorset's best kept secrets.

A family run 450 year old traditional Dorset pub.

Serving delicious homecooked food, excellent wines and spirits and a great selection of beers.

See our website for opening times:
www.theblackmorevaleinn.co.uk

Regular Live Music - Quiz Nights - Drinks Offers

The Blackmore Vale Inn
Burton Street, Marnhull, Dorset. DT101JJ
Tel: 01258 820701 Mob: 07488403380

TECHNEWS



YOUR MONTHLY TECH UPDATE

CHRIS RYU
Dorset Tech

Welcome back to my new column where I give you a brief overview of what's changing in the world of technology and how it will affect you in Marnhull.

MICROSOFT RECALL HAS BEEN RECALLED

Microsoft announced a new feature coming to Windows and people didn't like it to say the least. Recall was an innovative feature, but one that requires a lot of trust. Your PC would take screenshots of you using your computer and store it in its history. The AI called Copilot would then be able to refer back to things. For example you could say "I saw a pair of red shoes that I liked last week, but can't remember where" and the AI would be able to recall it. This type of memory is required for the next level of AI and of course the Sci-Fi AI from movies like Iron Man can do exactly like that, but it spooked people. Microsoft have gone back on their plans and while the feature will still be available, the launch is delayed and it will be opt-in only.

100X SPEED BOOSTS FOR EXISTING PCS

A Finish start-up has come up with a new type of chip called a PPC (Parallel Processing Unit) which works alongside your computers existing processor to improve speeds. They claim that even old CPUs can be boosted by up to 100x. Obviously existing motherboards don't have support for this chip so it would mean an upgrade either way, but re-using old silicon is a good idea and in theory these could be fitted in what we call PCIe slots that most PCs already have spare. Early days yet.

HP WOLF SECURITY

Popular PC and Printer company HP are having a big push on security recently. Their headline is HP Wolf. It can locate and/or erase a lost/stolen laptop even if the laptop is turned off. Granted this isn't actually new, but it is the first time we've seen it in a standard off the shelf laptop. Wolf has various other features to isolate risks and protect your data.

FOR WEBSITE AND APP DEVELOPMENT CONTACT CHRIS Dorset Tech

www.dorset.tech



Road Contacts: could you be the friendly person who welcomes a newcomer into your neighbourhood. Just 5 minutes of your time to deliver a Welcome Pack, which contains information about the clubs and societies in the village and maybe offer a cup of tea and a few words of welcome. We are still looking for additional road contacts if you live on one of the streets below, Lesley Ruth would love to hear from you on lesleyruth4@aol.com

Salisbury Street, Corner Close, Ashley Farm Lane, Woodlands Mead, Moses Lane, Cox Hill, Common Lane, Butts Close, Moorside outer farms
Thank you to those people who came forward following the article in last month's edition of the Marnhull Messenger - you have made a difference - but we could still do with a couple more drivers and road contacts please to make this service even more efficient. Thank You

DORSET
CHAMBER CHOIR

Summer Serenade

Let us entertain you with our selection of "Music perfect for a summer evening".
You will hear madrigals and folk songs, items by Byrd, Elgar and Monteverdi amongst others, as well as settings of the 'Te Deum' by Vaughan-Williams and Charpentier.

Merley House, Merley House Lane, Wimborne, BH21 3AA
Friday 12th July, 7:00 pm
Tickets £15 (students/children £5)
from choir members or at the door (subject to availability)

Live #LikeABosch

Our line-up of freestanding appliances with added peace of mind.

For Service Beyond The Sale
Marsh's
Your Local Electrical Retailer

🏠 34 Market Place, Sturminster Newton, DT10 1AR 📞 Tel: 01258 472564
🏠 59 Cheap Street, Sherborne, DT9 3AX 📞 Tel: 01935 389665
🌐 www.EB Marsh.com

T&Cs apply. Promotion dates: 01.04.22 - 31.03.23. Online registration required. Selected models only. Sold as an agent of Euronics Limited. All rights reserved. All offers are subject to availability while stocks last. Delivery & Installation charges may apply. Exclusions & radius applies. See in-store for full details. Images for illustration purposes only. Copyright Euronics 2022. E80E June 2022.

CROSSWORD AND SUDOKU ANSWERS

ACROSS 1. Gauchd 4. Egret 6. Ben 7. Bloaters 8. Boer
11. Haifa 13. Stay 15. Baptist 16. Grecian 17. Sago
19. Crown 21. Iota 24. Irish Sea 25. Van 26. Skink
27. Entree
Down 1. Gnome 2. Colchester 3. Okapi 4. Enema 5. Russet
6. Barb 9. Omaha 10. Retro 12. Fahrenheit 13. Sochi
14. Avast 18. Gemini 19. Crick 20. Ochre 22. Olive 23. Aran

4	5	6	7	8	9	3	2	1
2	7	5	6	1	8	9	3	8
9	6	8	3	2	7	5	4	1
6	8	2	9	4	3	1	7	5
5	3	1	4	8	9	2	6	7
8	9	2	3	4	5	6	7	1
9	6	8	4	3	1	5	9	7
3	4	5	1	7	6	9	8	2
7	1	9	2	5	8	4	3	6
8	7	4	6	1	5	3	2	9
8	7	4	1	2	3	9	6	5
6	1	5	3	2	3	9	6	5
7	8	4	1	2	3	9	6	5
6	1	5	9	7	8	2	4	3
3	2	9	5	6	4	7	1	8

Whether you live at No.18 or No.58,
we will find a buyer for you

01258 473766

Symonds & Sampson

Property advice since 1858

MARNHULL GARDEN CLUB



In May we were all very excited to welcome our speaker, the renowned Charles Dowding, who gave a captivating fact filled presentation to an audience of 120 people.

Charles' evidence-based 'no dig' approach captured the imagination of many of the audience and the numerous questions were answered comprehensively.

Charles has 40 years' experience of vegetable growing and has carried out numerous no-dig experiments to perfect his technique.

Basically put, his method involves leaving soil as undisturbed as possible and regularly feeding soil life with organic matter on the surface. Charles has numerous books and a very comprehensive website with free resources (www.charlesdowding.co.uk) if you would like more information.

In June we enjoyed a talk from Ron Briggs on The Wonder of Honey Bees. Ron's presentation was divided into two halves. The first part of the presentation was on the Asian 'yellow legged' Hornet which feeds on honey bees and other insects and the dangers this invasive species poses. They are extremely aggressive so it is inadvisable to approach or disturb a nest.

To curb the spread of this predator, Ron encourages the reporting of any sightings by taking a photo and reporting via the Asian Hornet Watch app (which you can download) or email alernonnative@ceh.ac.uk. They



can be identified by a dark abdomen with a wide orange stripe at the 4th segment, yellow tips to legs, a black head with orange face, and black and velvety thorax. Further information can be found on the BBKA website (www.bbka.org.uk).

The second part of Ron's presentation consisted of thought-provoking facts about honey and how local honey (being unadulterated with added substances) can be far superior to supermarket brands.

Ron also talked about fascinating Bee Experience Days which are available locally. Details are available from North Dorset Beekeepers online.

On the 18th May we held the Marnhull Garden Club plant sale. This raised an impressive £2012.50 for Help for Heroes from the sale of plants, cake, coffee and tombola.

A very big thank you to everyone who supported this; the purchasers, the suppliers and the numerous volunteers who helped make this such a success.

The Marnhull Flower Show will take place on the 6th July at the Village Hall. Show schedules are available from the Spar in New Street or the Robin Hill Stores.

There are nearly 130 varied classes, including children's classes, arts and crafts, photography, baking and brewing.

Simply search for Marnhull Flower Show on Facebook for a wealth of information and inspiration.

On the 9th July we look forward to hearing a presentation from Castle Gardens on seasonal interest and colour in the Garden. This promises to be an interesting and inspirational event.

As always, non-members are welcome at a day rate of £3.00.

If you would like to join Marnhull Garden Club and enjoy some of the experiences described above, and more, you would be made most welcome.

You don't need any gardening knowledge and we have a few experts and keen knowledgeable amateurs who can advise you and share their experiences.

With over 100 members it's also a great opportunity to meet other people in the village and become more involved in the local community.

Members enjoy various discounts and special offers at local garden centres, can participate in organised trips to local gardens and can come to the occasional social event.

Full membership costs £20 for the year or you can attend as a day member (without these benefits) for just £3 on the door. We meet in Marnhull Village Hall at 7pm (talk starts at 7.30pm) on the second Tuesday of each month except August.

And Now Some Gardening Tips For July.

Keep picking sweet peas – this will stop them setting seed so you can enjoy beautiful blooms for longer. As annual flowers they are programmed to bloom, set seed, then die.

Picking them often and deadheading flowers interrupts this cycle encouraging them to bloom longer often until September.

Grow on your biennials – if you sowed biennials such as wallflowers or foxgloves in Spring, now is the time to transplant them ready to grow on in individual pots or a spare bed. Plant into their flowering positions in Autumn.

Dig first new potatoes - these take about 12 weeks from planting to harvest and should be in flower by the time they are dug up. Work your hand into the ridge to check the size of the tubers. If they are the size of a hen's egg they are worth digging.

St. Gregory's Church warmly invite you



VILLAGE AFTERNOON TEA

MONDAY 26TH AUGUST 2024
2PM-5PM
MARNHULL VILLAGE HALL,
BURTON STREET
MARNHULL
DT10 1PP

Come and enjoy a home-baked afternoon tea with friends and family. A few stalls will also be available. An event for church funds. More details to follow. www.stgregorysmarnhull.org.uk

HOOK

ELECTRICAL CONTRACTORS

Domestic Commercial Ecclesiastical

All Aspects of Design, Installation, Inspections & Repair works

Contact Ed Cudlip on 01258 820161 or 07956281644
Email: hookelectrical@gmail.com








SALES, LETTINGS, COMMERCIAL, SURVEYS

More Properties Urgently Required!

Gillingham * Shaftesbury * Sturminster Newton * Wincanton

Tel: 01258 473900



BELLE CARE





EXCEPTIONAL LIVE-IN CARE

We are a local care agency, based in North Dorset, specialising in providing support for those who need help in order to continue to live in their own homes. We provide affordable, tailor-made respite or permanent care, which fully takes into account your needs and wishes. If you'd like to know more about how we can help you or a family member, without any obligation, please call Arabella.


07733 196677 - 01747 702142
info@bellecare.co.uk

www.Back2Market.com

REMOVALS - PACKING - STORAGE - CLEARANCE

Mobile: 07853 275379 - Freephone: 0800 2425012



Contact us for your free, no obligation quote
Phone: 01963 400352
Freephone: 0800 2425012
Mobile: 07853 275379
Email: enquiries@back2market.com
Website: www.back2market.com



All aspects of building work undertaken including:

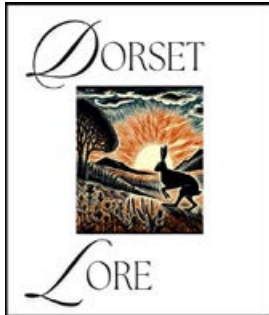
- Extensions
- New Builds
- Roofing
- Renovations
- Loft Conversions

Camelot Builders Ltd
Farm Office
East Lawn Farm
Lawn Crossroads
Gillingham
Dorset SP8 5QN
www.camelotbuilders.co.uk

Tel: 01747 835422
email: info@camelotbuilders.co.uk



DORSETLORE



RAIN AND KNOB THROWING

CHRIS WALTON
Oak Digital Solutions

Welcome to Dorset Lore, a monthly column featuring the rich heritage of folklore, tradition, ghost stories and legends of the county of Dorset. For July we look at St Swithin's Day and the culinary wonder that is the Dorset Knob.

St Swithin was a 9th century Bishop of Winchester who was buried at his request in the Old Minster outside Winchester Cathedral so that he could hear "the sweet rain of heaven". A century after his death his bones were dug up by order of Bishop Ethelwold and rehoused in a lavish shrine commissioned in his memory by King Edgar. St Swithin, apparently disapproved of the gesture and a sudden storm led to the belief that he cursed the land from beyond the grave. The superstition was recorded in a 12th century verse:

"St Swithin's day, if thou dost rain
For forty days it will remain
St Swithin's day, if thou be fair
For forty days 'twill rain na mair"

St Swithin's Day is on July 15th. Let's keep our fingers crossed.

The Dorset knob is a hard, dry, savoury, crumbly biscuit made from bread dough enriched with extra sugar and butter. They are rolled and shaped by hand and baked three times. They are named after their shape's resemblance to Dorset knob buttons which were made from yarn.

Dorset knobs are often eaten with cheese especially Dorset Blue Vinney. As they are so hard, they are also sometimes eaten by first soaking them in sweet tea.

Dorset knobs were said by his parlour maid to have been a favourite food of Thomas Hardy.

Today the only firm to produce Dorset Knobs commercially is Moores Biscuits in Bridport. The Moores family have baked biscuits in Dorset since before 1860. Dorset knobs are only produced during the months of January and February and usually sold in a distinctive traditional tin.

I love seeing new traditions appear: Dorset knob throwing began in 2008 at a festival in the Dorset village of Cattistock, inspired by a Yorkshire pudding throwing game that the organiser had seen on television. Other events at the festival included a knob and spoon race, knob darts, knob painting and guess the weight of the big knob. Unfortunately, Covid and various other issues have meant a break of five years. But Knob throwing will hopefully take place once again at the Cattistock Countryside Show, (9 miles west of Dorchester) on Sunday 14th of July 2024.

I have already gathered lots of folklore specific to Marnhull and surrounding villages and would be very interested to hear what stories locals recall, what their sources are, and what variations there are of the stories I have already researched.

You can now follow and message Dorset Lore on Facebook (just search for Dorset Lore) and you can e-mail me at dorsetlore@gmail.com

FOR ALL YOUR LOCAL LORE
Dorset Lore - On Facebook
Email: dorsetlore@gmail.com

NEWS FROM TRADING STANDARDS

Stopping fly-tipping together

Trading Standards investigate doorstep crime and rogue trading. Rogue traders often don't have the necessary permissions to allow them to transport waste produced from their work. This means they are also more likely to illegally fly-tip building and garden waste somewhere, leading to a costly clean-up for other people, or for other Council services.

In the 12 months from April there were over 1700 reports of illegal fly-tips in Dorset, of which almost 800 were household related.

If you produce waste, at home or from a business, you have a legal responsibility to ensure it is disposed of legally and safely. This means making sure anyone who is handling your waste is licensed to do so. It is vital that you take steps to check that your rubbish will be disposed of correctly and that you are confident you know where it will end up.

Did you know that as a householder you can be liable if your waste is later fly-tipped? Dorset Council Environmental Enforcement Team investigate fly-tipping to identify the waste carrier and the place the waste originated from.

The Household Waste Duty of Care Regulations 2005 are not there to scare people, but to serve as a tool in the constant battle to eliminate fly-tipping and environmental crime. Put simply, if people don't pay illegal operators to take their waste, the illegal operator won't be able to fly-tip it.

Steps you can take to protect yourself include asking for the business' waste carrier licence number, don't pay cash and ask for a receipt or Waste Transfer Note. If they can't provide it, or aren't registered, then look for someone else. You can check if someone is registered first using the Environment Agency's public register <https://environment.data.gov.uk/public-register/view/search-waste-carriers-brokers> or, by calling the Environment Agency on 03708 506 506.

To be sure a trader works in a legal, honest and fair way, then think about using a Buy With Confidence Trading Standards approved trader. Search for a Buy With Confidence trader near you at buywithconfidence.gov.uk or by phoning the Citizens Advice consumer helpline on 0808 223 1133.



St Gregory's Church
Marnhull

2024 AUTUMN CONCERTS

(Alternate Sunday afternoons at 3pm)

- 25th August - Anthony Burns-Cox (organ)
- 8th September - Neil Sissons (organ)
- 22nd September - Clapper Chaos (hand bells)
- 6th October - Louise Cousins (piano) and special guests
- 20th October - Stephen Binnington (organ)
- 3rd November - Ian Jordinson's organ compositions

No tickets required but donations towards Church Funds will be gratefully received

ROYAL BRITISH LEGION
MARNHULL BRANCH AND CLUB

LEGION HALL, SODOM LANE, MARNHULL
TELEPHONE: 01258 820613
Clubhouse open hours
Tues-Thur 8-11:30pm, Fri 4.30-11pm, Sat 12-3pm, 7-11.30pm

SKITTLES (LEAGUE and FRIENDLY) -
DARTS POOL
LIVE ENTERTAINMENT
BRANCH AND CLUB MEMBERSHIP
NOW AVAILABLE
FAMILIES MOST WELCOME
Come along and see what we can offer you

Website: www.marnhullrbl.co.uk
Email: whiteheadjack51@gmail.com

Alternate Mondays
(from March 6th to Dec 11th)
PRIZE BINGO
Starts at 7pm - 10pm
Open to everyone

Royal British Legion Marnhull

BARTLETT
CONTRACTORS LTD

AGRICULTURAL CONTRACTORS
COMPLETE AGRICULTURAL CONTRACTING SERVICE

CIVIL ENGINEERS: HEAVY AND RURAL
OPERATED PLANT HIRE, HAULAGE, LANDSCAPING, FENCING,
LAND DRAINAGE, HEDGE TRIMMING,
LAKE AND POND CONSTRUCTION

TRACK REGENERATION
POTHoles TAKEN OUT IN ONE PASS.
QUARTER THE PRICE OF RESTONING THE SURFACE. CEMENT
CAN BE INCORPORATED

BEFORE

AFTER

SUPPLIERS OF OOLITIC LIMESTONE, TURF, TOPSOIL,
SAND, GRAVEL, SCALPINGS AND MORE

01258 472419
Web: www.bartlettcontractors.co.uk

For more information please visit:
www.marnhullstone.co.uk

SUPPLIERS OF NATURAL AND CUT STONE:

RANDOM DRESSED
SAWN SPLIT
CHISEL FACED ASHLAR
WINDOW SURROUNDS
DECORATIVE WALLS

FIREPLACES

ASHLAR

FLOORING

Dean Harris (Quarry Manager): 07771 684647
Office: 01258 472419
Whiteway Quarry, Whiteway Lane, Marnhull,
Dorset, DT10 1NQ

MARNHULL TENNIS CLUB



FLOODLIGHTS TO DELIVER A BRIGHTER FUTURE

The most exciting news from Marnhull Tennis Club is that the floodlights project has met its funding target! Work is scheduled to begin in September, which will allow our members as well as other members of the community to continue playing through the darker winter evenings.

COMPETITIONS GALORE

The club is in the midst of its busiest season, with club tournaments and local league matches taking place every week. If you want to come down and support the local side, league matches take place on July 2, 9 and 16.

SUMMER COACHING FOR JUNIORS

We will be running three summer coaching sessions for members and non-members from July 29-31. These are available across three age groups and will take place at the same time each morning:

Beginners (ages 5 to 8): 9.30am to 10.30am (£6 per session for members, £8 for non-members)

Inters (ages 9 to 12): 10.30am to 12.00 noon (£9 per session for members, £11 for non-members)

Seniors (ages 13 to 16): 12 noon to 1.30pm (£9 per session for members, £11 for non-members)

To confirm a place, please contact Norma Amlot via dnamlot@icloud.com.

BEGINNERS WELCOME

Fancy giving a tennis a try? We have a weekly Beginners and Rusty Rackets session Wednesday Evenings from 6.00pm.

MARNHULL WOMEN'S INSTITUTE

The scheduled speaker was unable to come, so Sarah Delves stepped in with a talk on handbags. Some of us were sceptical, but how wrong we were.

She told us she is an antique dealer based in Salisbury, and her father had been an expert in silver flatware, and wanted her to follow – so of course, she didn't.

The earliest known "handbag" is between 3300 and 3200 years old and was found in 1991 when a mummy emerged from the Alpine ice. Ötzi, also called the Iceman, had with him what we would now call a "man-bag" – pretty obviously you need something to carry your items if you are crossing a mountain range. Since then other old "man-bags" have been retrieved from excavations in bogs and mountains, or melting glaciers.

Coming to more modern times, we had a quick trot through Henry VIII's codpiece – in which he kept some jewels (hence "the crown jewels"), Charles II's mistresses' bags – very strong and flat bottomed for heavy coinage (one of the women, in one session, lost the equivalent of £5 million gambling!!), to Lucy Locket's pocket, which actually looked like a sack about 12" deep and 6" wide, and was suspended from a belt. These were used to keep kerchiefs, penknives, needles & thread, everything a housewife would need. Then someone said "why don't we sew pockets into clothes"?

She showed examples, some in photos, of extraordinary handbags, some beautifully crafted with beads, chainmail, embroidery, crochet work, inset

with semi-precious stones, some nastier ones made of elephants ears and other things that nowadays are just not acceptable. Then to the 1920s and fashionably minute ones capable of holding nothing but a lipstick. Various museums – particularly V&A, hold some very special examples.

We all enjoyed it – even though most of us nowadays don't go in for fancy handbags for everyday- esp. not Birkin or other extremely expensive ones. Not in Marnhull anyway.

MARNHULL CRAFT CLUB

A huge thank you to everyone who came along to the presentation by Crimson Peacock at the beginning of May, in support of the Dorset and Somerset Air Ambulance, where we raised a total of £503.

We were very grateful to Jules Mayhew for her interesting and informative talk and learnt a great deal about how she was inspired by her trips to Jaipur to create such colourful and individual pieces. Thank you too to all those who made and served the refreshments and ran the stalls.

Our next regular meeting is on Thursday 6th June at 10am where we'll be learning how to make Twiddle/Fiddle Muffs for Dementia patients using knitting and crochet techniques. Everyone is welcome to join us.

The Craft Club meets every month on the first Thursday of the month (except August) in the Methodist Church Hall. We are a friendly informal group where you can discover new crafting ideas, talk to others about what you've been making or just bring along what you're working on and have a cup of tea and a chat. For more information contact Sue Piper on 07787 299227.

@ THE IVY

We are delighted to announce that Kim has now taken over the ownership of this super successful Unisex Hair & Beauty salon in Burton Street. Open 6 days a week. Phone for appointment. 01258 820033.



JUMBLE SALE!

JUMBLE SALE at Marnhull Royal British Legion DT10 1HR on Saturday 15th June. Doors open at 10.15.

MARNHULL MEN'S SHED

The Marnhull Men's Shed meets weekly at our workshop, where members can work on their own projects or work together on Community projects. There is also the opportunity to learn new skills or pass on skills to others. For those not project minded there is always the chance for a natter over tea and biscuits with friends old and new.

FOR MORE INFORMATION:

Please contact Alan Loukes
Alan@loukes.co.uk or 07767 817173

ROBIN HILL STORES

POST OFFICE & CONVENIENCE STORE

- Beautiful Fresh Fruit & Veg
- Locally sourced hand carved ham & cheeses
- Fresh snacks & sandwiches
- Locally baked speciality breads & cakes
- Newspapers & Magazines
- Cards, Stationery
- Wines, Beers & Spirits
- A big range of household essentials

Full Post Office service including cheques & cash, car tax, electricity, gas & mobile top up. National Lottery, Foreign currency & Dry Cleaning

01258 820959 | robinhillstores@gmail.com | www.robinhillstores.co.uk

Love your Local Shop,
THINK BIG, SHOP SMALL

Mon – Saturday 7.30 til 8 Sunday 7.30 til 12

TONY WILLIAMS
ACCIDENT REPAIRS

MIRACLE PULL - DENT REPAIRS

APPROVED BY:

LOCATED BETWEEN MARNHULL & STALBRIDGE

01963 365733

OFFERING THE HIGHEST QUALITY REPAIRS USING THE BEST QUALITY MATERIALS & EQUIPMENT

CLUBS & CLASSES



Marnhull & Gillingham BADMINTON Club

BADMINTON FOR BEGINNERS

Monday Club Social Night: 8-10pm (except bank holidays)
 Joining Fee £25
 Adults £4.50
 Family (up to 2 adults & 2 children) £7.00
 Juniors £3.00

All Coaching FREE (Badminton England Coach)
 Loads of fun for children and families

Badminton Club Night Tuesday club night: 7.00-10.00pm
 First night free to new members

All Coaching FREE (Badminton England Coach)
 Intermediate level players always welcome

Badminton Senior Night
 Thursday senior league night: 8.15-10.15pm
 The club is interested in players who wish to play at a league level.

The club participates in the Salisbury district league - div2 mens and div2 mixed and div3 mixed

CONTACT:
 Robert Tulk - 01258 820728
 Meet at Riversmeet on Mondays, Tuesdays & Thursdays

MARNHULL LUNCH CLUB

Meets on the 1st Friday of every month in the Village Hall, except January. The club opens at 12 noon and lunch is served at 1pm. Transport can be provided to and from the Village Hall if needed.

Main Course, Dessert and Tea or Coffee £10.00

For more information please call
 Liz 01258 821378 or Dawn 01258 820642

PASSIONTIDE CHAROALE PRELUDES

On Tuesday 19th March, Stephen Binnington will play a 30-minute programme of Chorale Preludes for Passiontide starting at 12 noon in St. Gregory's Church.

Perhaps this might be an opportunity to reflect on the period of Lent and Passiontide through the music of Bach, Brahms, Parry and others?

MARNHULL GARDEN CLUB

The Garden Club meets at 7.30pm on the 2nd Tuesday of most months, in the Marnhull Village Hall.

Come and join us for refreshments and a chat.

We usually have a guest speaker and learn some new gardening tips.

Contact Secretary Phil Silvester 01258 394288 / 07921 214591 marnhullgardenclub@gmail.com

MARNHULL MUSIC SOCIETY

Meets every 3rd Monday of the month (except July and August) at 7:15pm in the village hall. We listen to a varied programme of music (mainly but not exclusively classical) presented by one of our members and enjoy a social 'cuppa' during an interval.

FOR MORE INFORMATION:
 Please contact Alan Loukes on 01258 821629

MARNHULL AMBLERS & RAMBLERS

Short walk (amble) approx 3 miles
 on 2nd Thursday morning of the month
 Contact Anne Dowsett - dowsettanne52@gmail.com

Longer walk (ramble) 5-7 miles
 on last Thursday of the month
 Contact Elaine Spencer-White - elainesw48@gmail.com

MARNHULL CRAFT CLUB

Meets at 10:00am on the first Thursday of every month (except August) in

THE METHODIST CHURCH HALL

Relax, meet new and old friends for coffee and chat. Use your skills and learn something new, in a friendly and relaxed atmosphere.

More information from Sue Piper - 07787299227

MARNHULL BRIDGE CLUB

Marnhull Bridge Club meets in the Methodist Hall every Tuesday at 2pm to play Chicago.

New Players always welcome.
 Call 01258 820036 for information

FRENCH & SPANISH CONVERSATION

Want to get those little grey cells working? Then come along to French or Spanish conversation! This can complement your work with Duolingo or refresh your memories of your O level days.

For more information contact Ros Eveleigh on 821049.

MARNHULL WOMEN'S INSTITUTE

Meets on the 2nd Monday in the month (except Aug)
 At 7.30pm in the Village Hall

We look forward to seeing new and old members
 President: Nicola Denham - 01258 821343

BLACKMORE VALE ART GROUP

The group meets monthly on the second Friday at 10:30am in the Village Hall.

All styles and levels of experience are welcomed.

FOR FURTHER INFORMATION CONTACT
 Yvonne 820247 or mikyon@aol.com



Charleston Civils & Build



CHARLESTON
 CIVILS & BUILD

Groundworks
 Civil Engineering
 Drainage
 Treatment Plants
 New Build Homes
 Extensions

CHARLESTON
 CIVILS & BUILD

All Aspects of Concreting Works

01963 361120

www.charlestoncivilsandbuild.co.uk



CALCOTT CONSTRUCTION LIMITED

From Design to Reality



Products range from conservatories, extensions, loft conversions, alterations, new properties, natural stone etc. Based in Sturminster Newton, between Shaftesbury and Blandford, we cover Dorset, Wiltshire, Somerset, Hampshire and beyond.

Calcott Construction is a building contractor who has been established since 1984 and handles all types of home improvements from conservatories to new dwellings. We provide a personal hands on service on all projects large and small. We always have a regular team of friendly and experienced tradespeople to complete all projects to the highest standard.

We are able to assist you in the design process right through to the reality of a completed project with the aid of an architect.

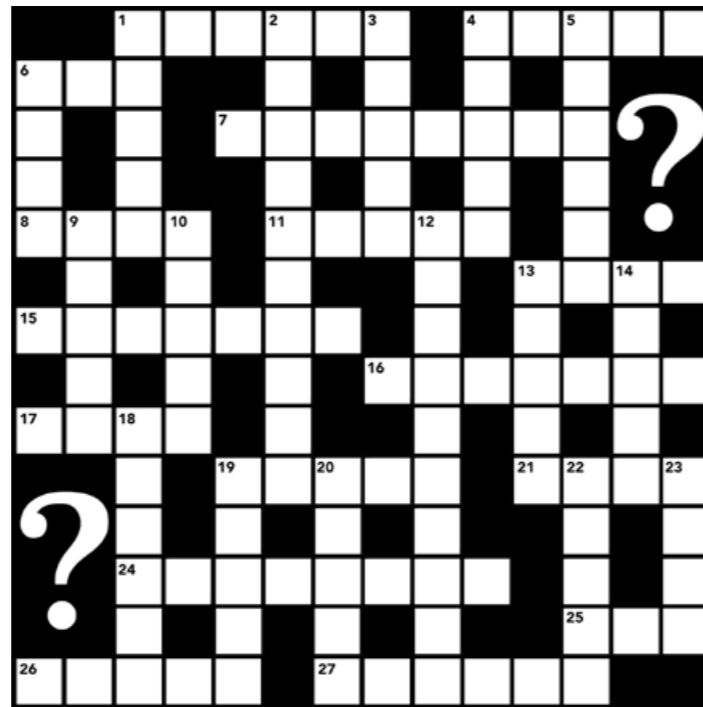
Conservatories Extensions Loft Conversions Alterations New Properties Natural Stone Dry Stone Walling

T: 01258 475 046
 www.calcottconstruction.co.uk



ACROSS

- 1) A South American cowboy . (6)
- 4) A heron with mainly white plumage. (5)
- 6) In Scotland a high mountain. (3)
- 7) Herrings cured by salting and smoking. (8)
- 8) A member of the Dutch population that settled in South Africa in the 17th century. (4)
- 11) The third largest city in Israel. (5)
- 13) A large rope used to support a ship's mast. (4)
- 15) Member of a Protestant Christian denomination who believe in total immersion. (7)
- 16) The type of urn that John Keats wrote a poem about. (7)
- 17) Edible starch that is obtained from a palm. (4)
- 19) Pre decimal coin worth 25 new pence. (5)
- 21) An extremely small amount. (4)
- 24) Body of water that separates Ireland and Great Britain. (5-3)
- 25) The foremost division of an advancing military force. (3)
- 26) Smooth bodied lizard with short or no limbs. (5)
- 27) The main course of a meal. (6)



DOWN

- 1) Legendary dwarfish creature said to guard the world's treasures underground. (5)
- 2) Called Camulodunum, it was the first major city in Roman Britain. What is it called now? (10)
- 3) Large browsing mammal of the giraffe family. (5)
- 4) A procedure in which fluid is injected into the rectum to expel its contents. (5)
- 5) Dessert apple with a slightly rough greenish brown skin. (5)
- 6) Sharp projection near the end of a arrow or fish hook to make it hard to extract. (6)
- 9) Name of a US city that was used as a code name for a D-day beach. (4)
- 10) Imitative of a style from the recent past. (5)
- 12) Temperature scale name after a German physicist. (10)
- 13) Russian city the scene of the Winter Olympics in 2014. (5)
- 14) Nautical term meaning stop. (5)
- 18) Constellation representing the twins Castor and Pollux. (6)
- 19) Twist or strain the neck. (5)
- 20) Earthy pigment containing ferric oxide. (5)
- 22) Type of branch that the dove brought back to Noah after the flood in the Old Testament. (5)
- 23) Type of knitting associated with a group of islands off the West coast of Ireland. (4)

	2		6			
			2 7		4 1	
5						
		2			7	
3 4				9	2	
			8	3		
8			5			9
1	6					
	3	9	6			

	5 6	7 1				
			6 4	9		
		3		7		
2						
	3 8				6	
5	6			3		
			3		5	
				2		
	9		4		8	

ALL PUZZLE ANSWERS ON PAGE 24

New Messenger Deadline:
Mid-Day 14th August

Email all texts, announcements
and other requests to:
editor@marnhullmessenger.org.uk



- ◆ Buying and Selling Your Home
- ◆ Commercial Property
- ◆ Wills
- ◆ Agricultural and Rural Business
- ◆ Powers of Attorney
- ◆ Employment
- ◆ Probate and Estates
- ◆ Property and Land Disputes
- ◆ Equity Release
- ◆ Court of Protection



Shaftesbury: 01747 440448
Sherborne: 01935 817736
Gillingham: 01747 822103

www.maclachlansolicitors.co.uk



- Removals & Containerised Storage
- Partloads / Small Moves (Starting at £300+VAT)
- Shipping - Worldwide
- Local & Nationwide

01258 858564

www.pitmansremovals.co.uk

We are proud to announce our new premier partnerships, bringing forward better prices for our clients.

**SH♥P
LOCAL**



Premium appliances designed with innovations for your home for a better today and sustainable tomorrow.



Treat your kitchen to the latest technology. Browse must-have integrated and freestanding appliances and love-to-have



The Tap That Does It All — 100°C boiling, filtered chilled and sparkling water. Energy efficient, safe and sustainable.

Helping you with your decision for quality appliances within your new kitchen or when the time comes to make replacements.....



Bespoke style with a price to make you smile.

Why is it important to engage a professional to design the most important room in your home?

Home is where the heart is. And the kitchen is the heart of the home.

Your kitchen is a hive of activity where the day starts and ends, where the whole family bonds and where your children first start to learn. It is the place to cook, entertain, relax, and above all – enjoy. That is why you need a professional designer to understand your needs and build them into your dream kitchen.

At Harts, we provide an unique service that is not available on the high street, with fully comprehensive options and most importantly, we provide the best choices within your budget.